

# JUVENILE PROBATION DEPARTMENT

Tom Brooks, Executive Director



## Executive Monthly Activity Report – August, 2016

### 2016 Referral

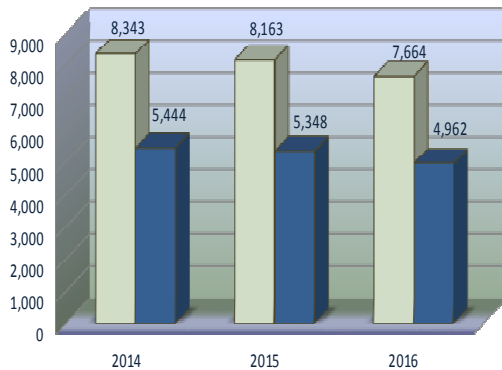
Charges Received	
January	931
February	1,210
March	1,057
April	1,087
May	1,112
June	891
July	611
August	765
September	
October	
November	
December	
<b>TOTAL</b>	<b>7,664</b>
<b>AVERAGE</b>	<b>958</b>
<b>YOUTH</b>	<b>4,962</b>

### Harris County Census Data Comparisons\*

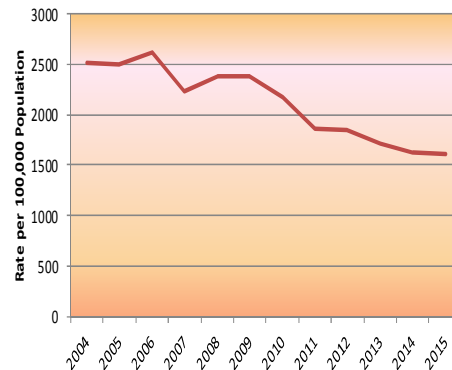
Year	Census Data*	Delinquent Conduct		Felony		Murder	
		Referrals	Rate/100,000	Referrals	Rate/100,000	Referrals	Rate/100,000
2004	444,722	11,184	2,515	3,703	833	14	3
2005	448,861	11,187	2,492	3,725	830	13	3
2006	451,874	11,790	2,609	3,850	852	16	4
2007	454,279	10,974	2,416	3,594	791	14	3
2008	453,639	10,333	2,278	3,107	685	27	6
2009	452,494	10,795	2,386	2,899	641	16	4
2010	453,180	9,845	2,172	2,398	529	18	4
2011	458,330	8,554	1,866	2,231	487	10	2
2012	432,521	7,988	1,847	2,038	471	8	2
2013	436,452	7,496	1,717	2,019	463	9	2
2014	440,692	7,188	1,631	2,024	459	8	2
2015	444,725	7,153	1,608	2,123	477	7	2

\*Census Project Data for youth aged 10-17

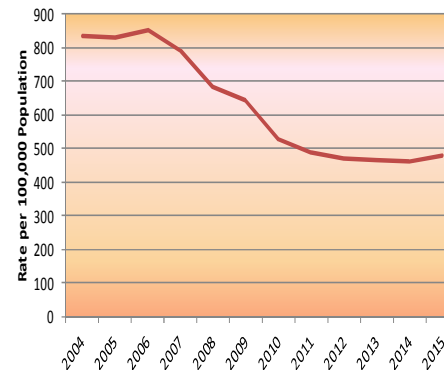
Charges Received as Compared to Youth Involved January-August 2014-2016



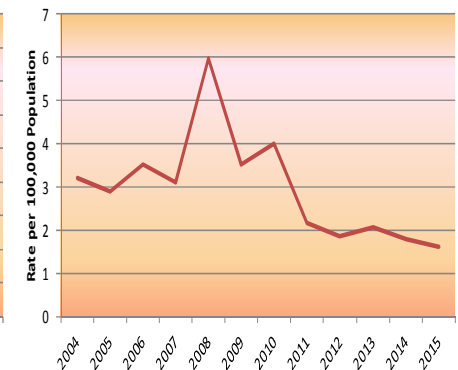
Delinquent Conduct Referrals



Felony Referrals



Murder Referrals



# JUVENILE PROBATION DEPARTMENT

Tom Brooks, Executive Director

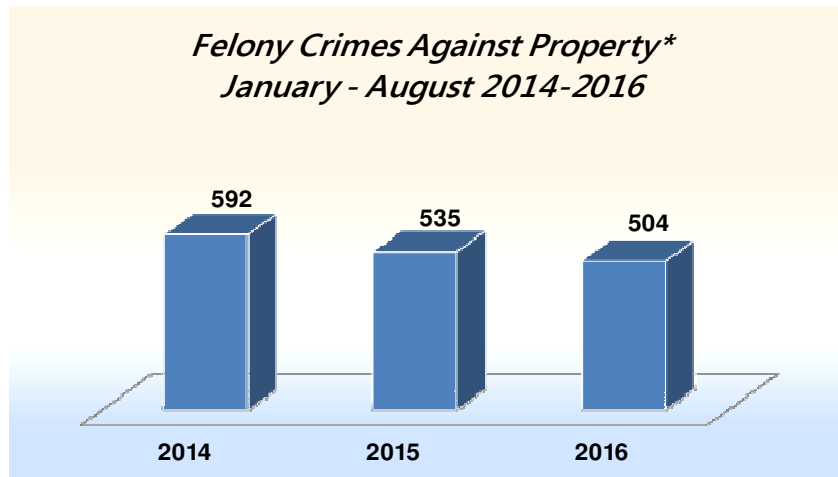


## Executive Monthly Activity Report – August, 2016

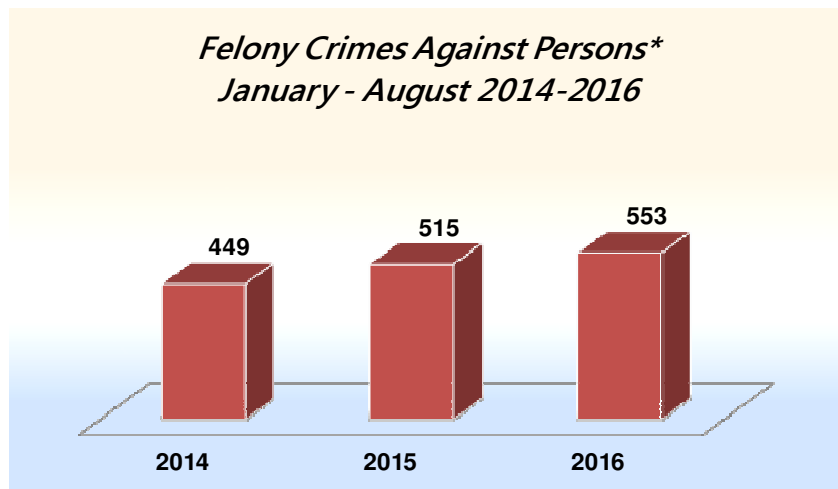
Page 2 of 13 pages

### Type of Charge Based on Crime Category

	Jan	Feb	Mar	Apr	May	Jun	Jul	Aug	Sep	Oct	Nov	Dec	TOTAL	% TOTAL
Person (Felony)	75	102	78	83	64	52	41	58					553	7.2%
Person (Misdemeanor)	80	102	94	109	100	51	32	40					608	7.9%
Property (Felony)*	77	69	62	68	73	52	49	54					504	6.6%
Property (Misdemeanor)	145	139	129	191	144	141	86	96					1071	14.0%
Illegal Substance	91	173	113	123	120	57	30	46					753	9.8%
All Others	118	130	122	143	122	115	69	91					910	11.9%
CHINS	15	29	24	35	30	26	3	39					201	2.6%
Violations of Probation	80	112	91	82	96	80	62	64					667	8.7%
Administrative Offenses	250	354	344	253	363	317	239	277					2397	31.3%
<b>TOTAL</b>	<b>931</b>	<b>1210</b>	<b>1057</b>	<b>1087</b>	<b>1112</b>	<b>891</b>	<b>611</b>	<b>765</b>	<b>0</b>	<b>0</b>	<b>0</b>	<b>0</b>	<b>7664</b>	<b>100.0%</b>



\*Arson, Burglary, Theft, AutoTheft, Unauthorized Use of a Motor Vehicle, and Criminal Mischief.



\*Murder, Robbery, Assault, and Sexual Assault.



"...reassure our young people that they can overcome certain obstacles and go on to become productive members of society." 2010 Annual

**JUVENILE PROBATION DEPARTMENT**

*Tom Brooks, Executive Director*



**Executive Monthly Activity Report – August, 2016**

Page 3 of 13 pages

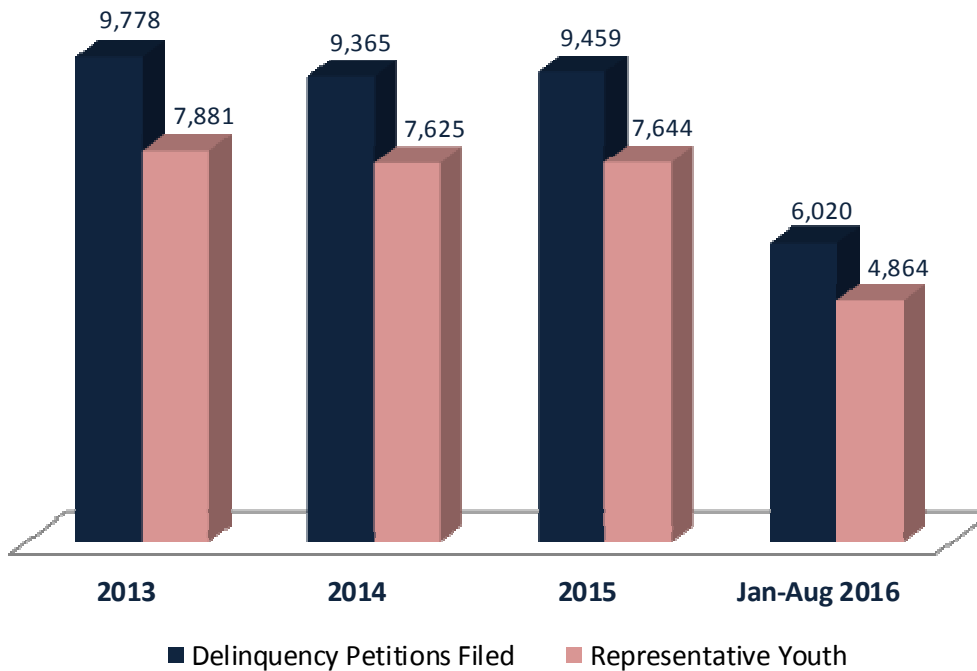
*Cases Assigned and Disposed  
January - August 2016*

	313th		314th		315th		TOTALS	
	Assigned	Disposed	Assigned	Disposed	Assigned	Disposed	ASSIGNED	DISPOSED
<b>Petitions*</b>	2082	2528	1981	2397	1957	2315	<b>6020</b>	<b>7240</b>
<b>Youth Involved</b>	1689	1919	1595	1820	1580	1622	<b>4864</b>	<b>5361</b>

\*Cases that are off the docket, withdrawn, under advisement, passed, or included with another referral have been deleted from these counts.

*Petitions Filed and Representative Youth*

	Delinquency Petitions Filed	Representative Youth
Jan-Aug 2016	6,020	4,864
2015	9,459	7,644
2014	9,365	7,625
2013	9,778	7,881



# JUVENILE PROBATION DEPARTMENT

Tom Brooks, Executive Director



## Executive Monthly Activity Report – August, 2016

Page 4 of 13 pages

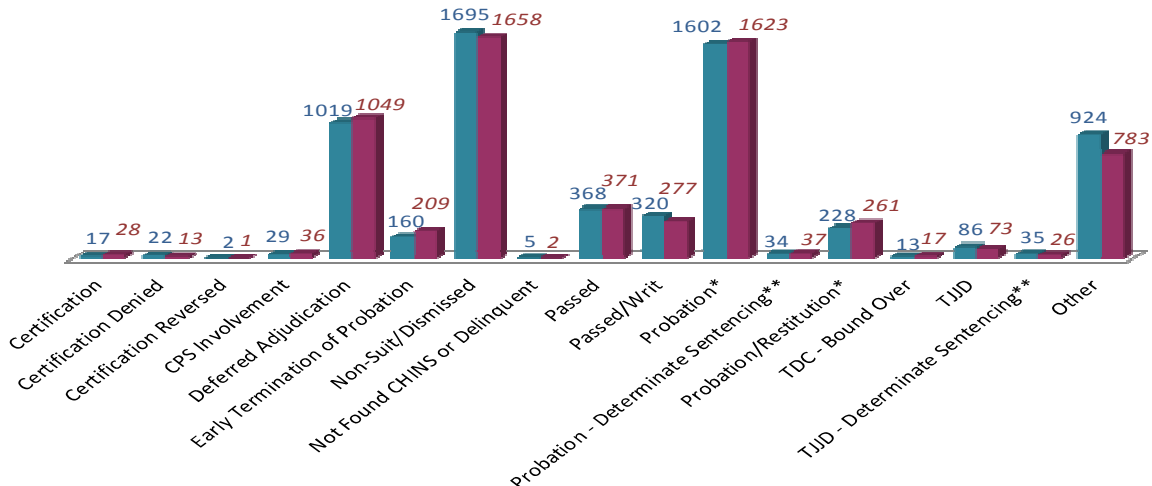
### Court Activity\* January - August 2016

COURT DECISIONS	Black		Hispanic		White		Other		DECISION	
	Female	Male	Female	Male	Female	Male	Female	Male	YOUTH	TOTAL
Certification	0	23	0	3	1	1	0	0	28	46
Certification Denied	1	7	0	4	0	1	0	0	13	19
Certification Reversed	0	0	0	0	1	0	0	0	1	1
CPS Involvement	6	12	2	4	3	9	0	0	36	55
Deferred Adjudication	148	309	110	226	79	169	3	5	1049	1147
Early Termination of Probation	20	75	14	60	6	32	1	1	209	295
Non-Suit/Dismissed	204	540	120	376	112	290	4	12	1658	1860
Not Found CHINS or Delinquent	0	1	0	1	0	0	0	0	2	2
Passed	63	127	34	71	22	50	1	3	371	748
Passed/Writ	35	101	21	71	10	36	2	1	277	498
Probation*	170	618	129	463	55	180	3	5	1623	2861
Probation - Determinate Sentencing**	2	16	0	14	0	4	0	1	37	41
Probation/Restitution*	13	120	7	78	2	40	0	1	261	310
TDC - Bound Over	0	12	0	4	1	0	0	0	17	19
TJJD	5	36	1	19	1	11	0	0	73	110
TJJD - Determinate Sentencing**	1	13	0	11	0	1	0	0	26	46
Other	92	272	63	191	43	111	3	8	783	1053
<b>TOTAL</b>	<b>760</b>	<b>2282</b>	<b>501</b>	<b>1596</b>	<b>336</b>	<b>935</b>	<b>17</b>	<b>37</b>	<b>6464</b>	<b>9111</b>

\*Includes Changes of Custody. Youth may be counted multiple times if received multiple decisions within the noted time period.

\*\*Approximate numbers – using declared determinate sentencing (DDS) as court result.

### Youth Comparison January - August 2015 / 2016



**JUVENILE PROBATION DEPARTMENT**

*Tom Brooks, Executive Director*



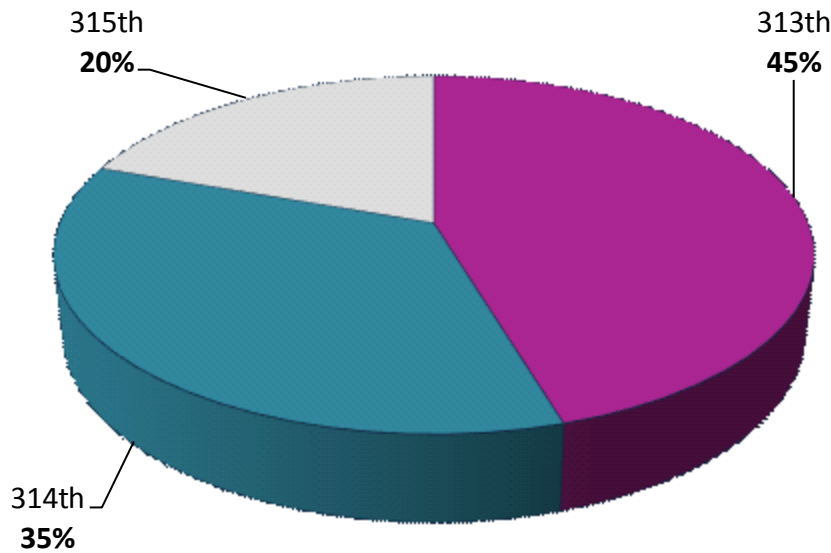
**Executive Monthly Activity Report – August, 2016**

Page 5 of 13 pages

*TJJD Dispositions by Court*

Disposition Year	Disposition	313th		314th		315th		TOTAL	TOTAL
		Youth	Dispositions	Youth	Dispositions	Youth	Dispositions	Youth	Dispositions
<i>Jan-Aug 2016</i>	TJJD	44	85	34	39	19	32	97	156
<i>2015</i>	TJJD	70	107	74	100	36	54	180	261
<i>2014</i>	TJJD	38	59	38	61	26	41	102	161
<i>2013</i>	TJJD	55	75	46	72	22	39	123	186

*TJJD Commitments By Court (Youth)  
January - August 2016*



**JUVENILE PROBATION DEPARTMENT**

*Tom Brooks, Executive Director*



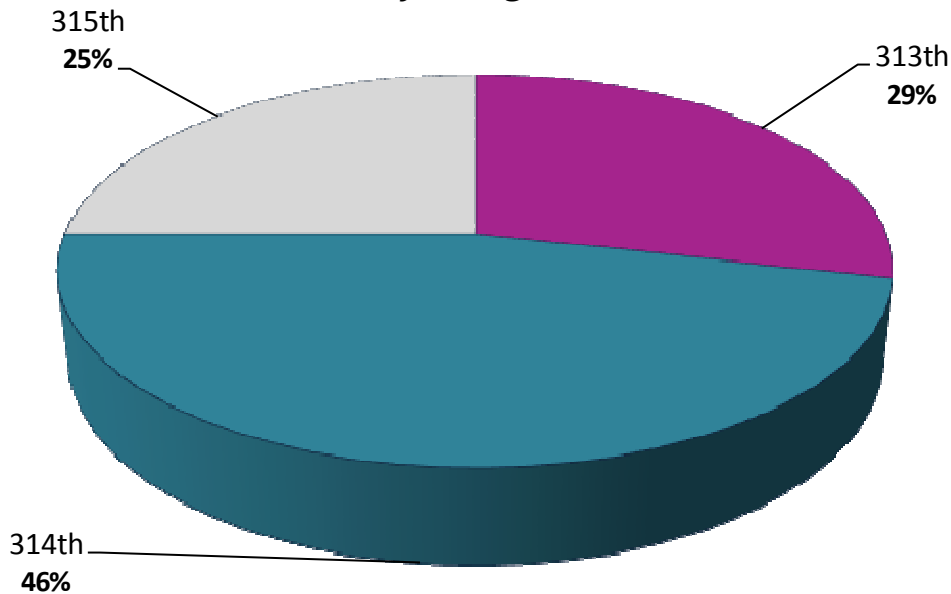
**Executive Monthly Activity Report – August, 2016**

Page 6 of 13 pages

*Certifications*

Disposition Year	Court			Youth Total	Petition Total
	313	314	315		
2016	8	13	7	28	46
2015	11	10	7	28	46
2014	11	20	3	34	63
2013	17	11	9	37	44
2012	16	15	1	32	47
2011	16	19	3	38	53
2010	27	14	19	60	87
2009	22	18	20	60	84
2008	34	31	23	88	135
2007	40	26	16	82	114
2006	42	26	22	90	120
2005	28	10	18	56	93

*Certifications by Court (Youth)  
January - August 2016*



# JUVENILE PROBATION DEPARTMENT

Tom Brooks, Executive Director



## Executive Monthly Activity Report – August, 2016

Page 7 of 13 pages

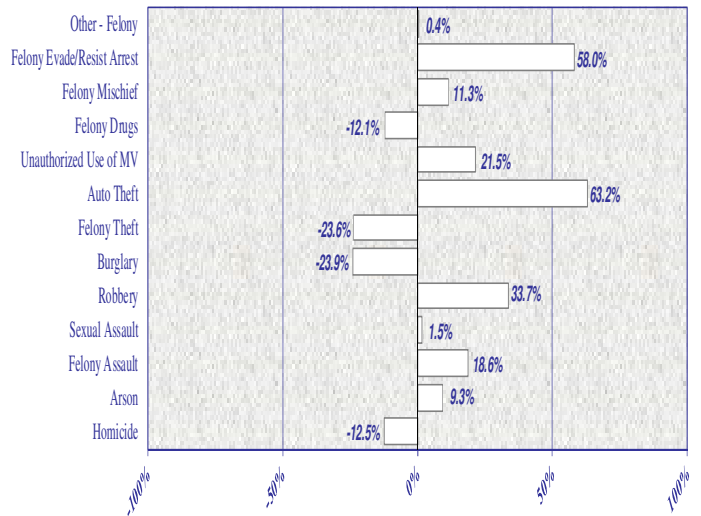
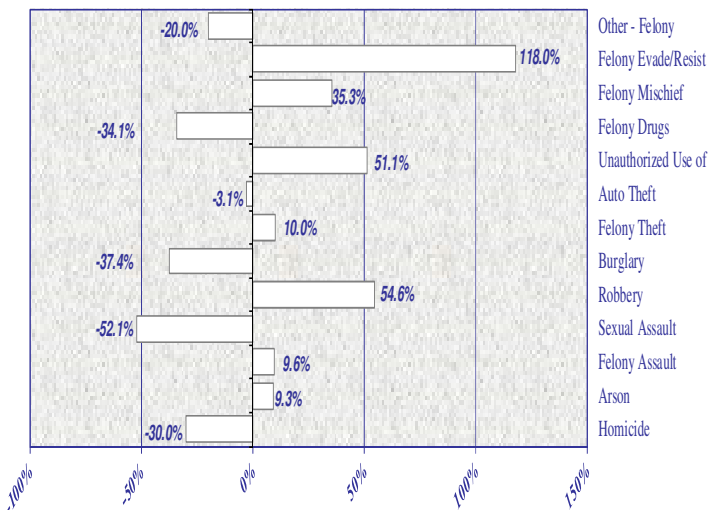
### Most Serious Charge Activity\*

	Jan-Aug											
	2005	2006	2007	2008	2009	2010	2011	2012	2013	2014	2015	2016
Homicide	13	16	14	27	16	18	10	8	9	8	7	8
Arson	57	57	29	53	56	52	43	47	31	43	47	17
Felony Assault	419	402	351	328	336	351	303	295	304	279	331	222
Sexual Assault	249	231	171	149	148	142	142	128	113	67	68	84
Robbery	330	357	374	351	345	324	282	263	357	326	436	239
Burglary	696	703	703	685	788	552	542	514	450	447	340	211
Felony Theft	69	110	106	84	110	84	99	110	117	144	110	80
Auto Theft	52	47	39	33	22	22	32	32	20	19	31	20
Unauthorized Use of MV	276	251	222	183	153	122	130	101	106	163	198	149
Felony Drugs	665	744	740	407	349	309	232	183	159	174	153	78
Mischief/Felony	68	48	84	59	82	53	51	62	57	62	69	27
Evade/Resist Arrest Felony	99	122	85	81	80	55	50	53	60	69	109	84
Other - Felony	427	495	409	472	399	313	313	242	236	223	224	136
<b>Serious Offense Totals</b>	<b>3420</b>	<b>3583</b>	<b>3327</b>	<b>2912</b>	<b>2884</b>	<b>2397</b>	<b>2229</b>	<b>2038</b>	<b>2019</b>	<b>2024</b>	<b>2123</b>	<b>1355</b>
<b>Total Referrals</b>	<b>23,480</b>	<b>24,877</b>	<b>23,164</b>	<b>20,885</b>	<b>19,828</b>	<b>17,978</b>	<b>15,873</b>	<b>14,402</b>	<b>13,793</b>	<b>12,492</b>	<b>12,249</b>	<b>7,664</b>
<b>Serious Offense Percent</b>	<b>15%</b>	<b>14%</b>	<b>14%</b>	<b>14%</b>	<b>15%</b>	<b>13%</b>	<b>14%</b>	<b>14%</b>	<b>15%</b>	<b>16%</b>	<b>17%</b>	<b>18%</b>

\*This chart contains selected offense categories which are summed and shown as a percentage of ALL ACTIVITY TOTALS

### Five Year Offense Comparison Percentage Change, 2011-2015

### Most Current Completed Year Comparison Percentage Change, 2014-2015



"...holding youth accountable while offering support, guidance and direction to help them succeed." 2009 Annual Report

# JUVENILE PROBATION DEPARTMENT

Tom Brooks, Executive Director



## Executive Monthly Activity Report – August, 2016

Page 8 of 13 pages

The following table presents a comparison of **January-August 2015** referral activity as contrasted to **January-August 2016** referral activity. During this month, the data shows an overall 6.1% decrease in referral activity. Despite this decrease, increases are found for Sexual Assault (211.1%), Homicide (33.3%), Felony Assault (20.0%), and Misdemeanor A/B Assault (13.2%). Several decreases include Arson (-50.0%), Felony Mischief (-42.6%), Felony Drugs (-27.8%), and Misdemeanor A/B Theft (-24.1%). Less serious offenses decreased by 16.9%.

**There were 8 referrals\* for homicide during January-August 2016, compared to 6 for the same time period of 2015.**

### Offense Charge per Referral\*

Offense	Black		Hispanic		White		Other		Jan-Aug	Jan-Aug	Jan-Aug
	Female	Male	Female	Male	Female	Male	Female	Male	2015	2016	% Change
Homicide*	0	3	1	3	0	1	0	0	6	8	33.3%
Arson	2	4	3	2	1	5	0	0	34	17	-50.0%
Assault - Felony	41	90	9	44	10	26	0	2	185	222	20.0%
- MA/MB	122	196	71	100	51	62	3	2	536	607	13.2%
Sexual Assault	2	41	0	24	4	12	0	1	27	84	211.1%
Robbery	7	147	3	66	1	13	0	2	297	239	-19.5%
Burglary	4	73	5	73	3	53	0	0	196	211	7.7%
Theft - Felony	10	44	4	12	2	7	1	0	80	80	0.0%
- MA/MB	67	176	81	99	77	75	7	7	776	589	-24.1%
Auto Theft	0	9	1	6	1	3	0	0	21	20	-4.8%
Unauthorized Use of a Motor Vehicle	1	85	3	39	3	16	1	1	157	149	-5.1%
Drugs - Felony	3	16	4	32	6	16	1	0	108	78	-27.8%
- MA/MB	23	144	45	259	46	146	3	3	741	669	-9.7%
Mischief/Felony	3	11	1	5	1	6	0	0	47	27	-42.6%
- MA/MB	21	65	11	45	5	23	0	2	158	172	8.9%
Evade/Resisting Arrest Felony	1	45	3	22	1	11	0	1	78	84	7.7%
- MA/MB	21	148	20	105	7	63	0	3	385	367	-4.7%
DWI - MA/MB	0	0	0	2	0	3	0	0	3	5	66.7%
Trespass - MA/MB	26	139	19	74	6	38	1	2	353	305	-13.6%
Other - Felony	16	45	4	41	1	28	0	1	133	136	2.3%
- MA/MB	40	108	19	80	17	53	0	1	319	318	-0.3%
<b>Sub-Total</b>	<b>410</b>	<b>1589</b>	<b>307</b>	<b>1133</b>	<b>243</b>	<b>660</b>	<b>17</b>	<b>28</b>	<b>4640</b>	<b>4387</b>	<b>-5.5%</b>
Assault - MC	0	0	0	0	0	1	0	0	2	1	-50.0%
Theft - MC	0	3	0	2	0	0	0	0	1	5	400.0%
Drugs - MC	0	0	0	0	0	1	0	0	2	1	-50.0%
Other - MC	0	0	0	0	0	0	0	0	7	0	-100.0%
Disorderly Conduct	0	2	0	0	0	0	0	0	2	2	0.0%
City Ordinance Violations	0	0	0	0	0	0	0	0	0	0	0.0%
Violations of Probation	56	293	33	202	18	63	0	2	799	667	-16.5%
<b>Sub-Total</b>	<b>56</b>	<b>298</b>	<b>33</b>	<b>204</b>	<b>18</b>	<b>65</b>	<b>0</b>	<b>2</b>	<b>813</b>	<b>676</b>	<b>-16.9%</b>
Runaways - CHINS	24	38	32	31	27	46	2	0	154	200	29.9%
Other CHINS	0	1	0	0	0	0	0	0	75	1	-98.7%
TJJD Runaways	0	1	0	2	0	0	0	0	15	3	-80.0%
Administrative Actions *	215	1003	173	659	73	258	5	11	2466	2397	-2.8%
<b>Sub-Total</b>	<b>239</b>	<b>1043</b>	<b>205</b>	<b>692</b>	<b>100</b>	<b>304</b>	<b>7</b>	<b>11</b>	<b>2710</b>	<b>2601</b>	<b>-4.0%</b>
<b>GRAND TOTAL</b>	<b>705</b>	<b>2930</b>	<b>545</b>	<b>2029</b>	<b>361</b>	<b>1029</b>	<b>24</b>	<b>41</b>	<b>8163</b>	<b>7664</b>	<b>-6.1%</b>

\*Administrative Actions may include: motion to modify order, hold as material witness, request for change of custody, issuance of pick-up order, or motion for release and transfer. \*Of the 8 homicide offense referrals for 2016, there were 8 actual deaths.





# JUVENILE PROBATION DEPARTMENT

Tom Brooks, Executive Director



## Executive Monthly Activity Report – August, 2016

Page 9 of 13 pages

### Top 10 Felony and Misdemeanor Offenses

Top 10 Felony Offenses Jan-Aug 2016	Black		Hispanic		White		Other		Jan-Aug	Jan-Aug	Jan-Aug
	Female	Male	Female	Male	Female	Male	Female	Male	2015	2016	% Change
Burglary of a Habitat (Felony 1)	3	48	2	35	1	27	0	0	114	116	1.8%
Aggravated Robbery (Felony 1)	4	100	3	49	0	12	0	2	195	170	-12.8%
Burglary of a Building (Jail Felony)	1	23	3	31	2	19	0	0	80	79	-1.3%
Possession/Personal Use - Group 1, Less than 1 Gram (Jail Felony)	0	5	1	8	2	6	0	0	49	22	-55.1%
Unauthorized Use of a Motor Vehicle (Jail Felony)	1	85	3	39	3	16	1	1	157	149	-5.1%
Robbery (Felony 2)	3	45	0	17	1	1	0	0	100	67	-33.0%
Aggravated Assault Uses Deadly Weapon (Felony 2)	4	20	0	11	1	6	0	1	38	43	13.2%
Assault, Bodily Injury Against Public Servant (Felony 3)	19	32	5	10	5	6	0	0	67	77	14.9%
Aggravated Sexual Assault - Children Under 14 Years of Age (Felony 1)	0	32	0	14	4	8	0	1	14	59	321.4%
Theft From Person of Another (Jail Felony)	7	27	0	2	0	0	0	0	34	36	5.9%
<b>TOTAL</b>	<b>42</b>	<b>417</b>	<b>17</b>	<b>216</b>	<b>19</b>	<b>101</b>	<b>1</b>	<b>5</b>	<b>848</b>	<b>818</b>	<b>-3.5%</b>

Top 10 Misdemeanor Offenses Jan-Aug 2016	Black		Hispanic		White		Other		Jan-Aug	Jan-Aug	Jan-Aug
	Female	Male	Female	Male	Female	Male	Female	Male	2015	2016	% Change
Theft - \$50 - \$499.99 Value (Misd B)	19	31	11	10	14	9	2	2	582	98	-83.2%
Assault with Bodily Injury (Misd A)	94	149	43	63	22	44	2	0	337	417	23.7%
Possession of Marijuana for Personal Use - Less than 2 oz (Misd B)	19	133	36	218	33	126	3	3	626	571	-8.8%
Evading Arrest Detention (Misd A)	14	128	12	87	5	52	0	2	320	300	-6.3%
Theft - \$500 - \$1,500 Value (Misd A)	6	11	7	10	1	2	0	0	97	37	-61.9%
Criminal Trespass - General (Misd B)	17	107	12	50	6	33	1	2	278	228	-18.0%
Assault-Family Member (Misd A)	26	46	28	35	28	16	1	2	194	182	-6.2%
Mischief - \$50-\$499.99 Property Damage (Misd B)	4	26	8	12	3	8	0	0	118	61	-48.3%
Burglary of Motor Vehicle (Misd A)	0	38	3	25	3	26	0	0	96	95	-1.0%
Terroristic Threat - General (Misd B)	3	31	1	7	3	6	0	1	57	52	-8.8%
<b>TOTAL</b>	<b>202</b>	<b>700</b>	<b>161</b>	<b>517</b>	<b>118</b>	<b>322</b>	<b>9</b>	<b>12</b>	<b>2705</b>	<b>2041</b>	<b>-24.5%</b>



# JUVENILE PROBATION DEPARTMENT

Tom Brooks, Executive Director



## Executive Monthly Activity Report – August, 2016

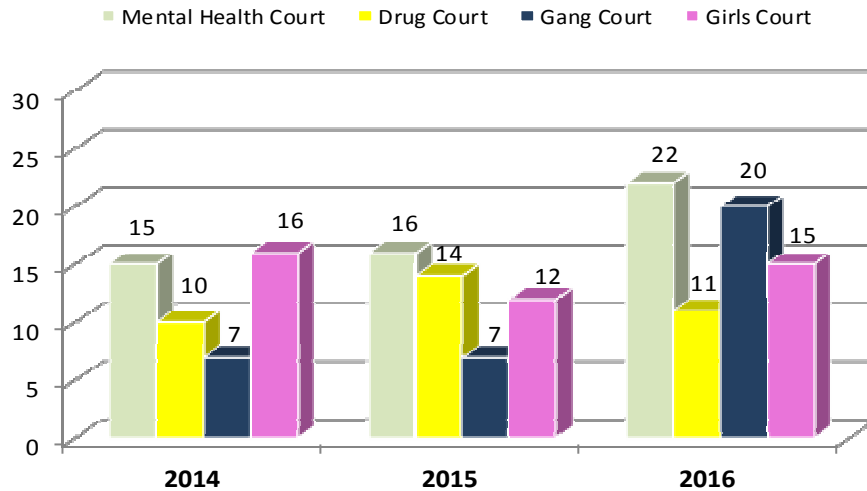
Page 10 of 13 pages

### Field Services Activity\*

Type of Probation Service	August					
	2014		2015		2016	
	Caseload	JPO Avg	Caseload	JPO Avg	Caseload	JPO Avg
Community Supervision	<b>1641</b>	27	<b>1508</b>	27	<b>1739</b>	32
Adjudication	856		751		968	
Deferred Adjudication	785		757		771	
Specialized Supervision	<b>1023</b>		<b>913</b>		<b>741</b>	
CUPS 9	191		186		164	
Mental Health	123	16	119	14	119	14
Sex Offender	68	15	67	14	45	16
CUPS 7	252		246		202	
Aftercare	252	16	246	17	202	14
CUPS 6	415		294		283	
Female Intervention	47	14	33	14	29	12
Intensive	368	18	261	13	254	15
YESS Program	165	14	187	17	92	13
Deferred Prosecution	<b>463</b>		<b>462</b>		<b>365</b>	
90-Day	212	9	238	9	180	9
180 Day	251	29	224	24	185	21
<b>Total</b>	<b>3127</b>		<b>2883</b>		<b>2845</b>	

\*Youth caseload is based on a daily caseload average for the month shown. JPO caseload average is calculated using the last JPO of record for the casefiles for the month shown. Effective November 1, 2015, the name of the Gang Unit was changed to the Youth Empowerment Services and Supervision (YESS) Program.

### Specialized Court Activity – August\*\*



\*\*Specialized Court Activity represents average youth count for the month shown.



# JUVENILE PROBATION DEPARTMENT

Tom Brooks, Executive Director



## Executive Monthly Activity Report – August, 2016

Page 11 of 13 pages

### Youth Admitted to Facilities\*

Facilities	Year Ending		Jan-Aug 2016
	2014	2015	
<b>Burnett-Bayland Reception Center</b>	<b>552</b>	<b>482</b>	<b>246</b>
Residential Assessment (BRU)	125	92	0
Drug Unit (BDU)	149	125	59
Brief Structural Intervention (BIU)	166	188	131
Psychological Unit (BMU)	47	0	0
Phoenix Unit (BPU)	44	77	56
Transition Unit (BTU)	21	0	0
<b>Leadership Academy (HLA)</b>	<b>219</b>	<b>274</b>	<b>163</b>
<b>Youth Village (HYV)</b>	<b>251</b>	<b>245</b>	<b>169</b>
County Post-Adjudication Subtotal	1022	1001	578
<b>Private Placement</b>	<b>165</b>	<b>140</b>	<b>42</b>
Boys Town (BOY)	1	3	0
TMG/Hays County Juv Ctr (CCI)	43	47	5
Clarinda Academy (CLR)	0	7	0
Center for Success (CSD)	11	11	5
Everyday Life (EDL)	5	0	0
Gulf Coast Trade Ctr (GCT)	8	0	0
Glen Mills Schools (GMS)	2	16	12
Hector Garza Ctr (HGC)	29	0	0
Lakeside Academy (LSA)	0	1	1
Mingus Mountain Estate (MME)	0	9	3
Mountain Home Academy (MTN)	0	2	0
Pegasus Schools, Inc. (PGS)	6	6	5
Rockdale Justice Ctr (RJC)	19	14	3
Renewed Strength Treatment Ctr (RSR)	3	0	0
Victoria County JJC (VIC)	19	12	3
We Care Treatment Ctr (WCT)	16	7	2
Woodward Academy (WWA)	0	5	3
All Post-Adjudication Subtotal	1187	1141	620
<b>Detention Center* (DET)</b>	<b>2888</b>	<b>2646</b>	<b>1960</b>
Detention Residential Assessment (DRU)	752	782	594
Detention Girls Intervention (GIP)	0	0	32
<b>Burnett-Bayland Detention (BDP)</b>	<b>0</b>	<b>78</b>	<b>120</b>
<b>Harris County Psychiatric (HCP)</b>	<b>109</b>	<b>143</b>	<b>87</b>
<b>TOTAL</b>	<b>4936</b>	<b>4790</b>	<b>3413</b>

\*Youth admitted is a count of individual youth, not the number of admits each may have had at that particular facility. If a youth was admitted at two different facilities he was counted once at each facility. The quantity of bed space increased at HCP from 16 to 21 as of March 2015. BBRC Pre-Adjudicated Detention was opened in June 2015. The post-adjudicated Detention Girls Intervention Unit launched April 2016.



“...transforming troubled youth into productive citizens...through commitment, community involvement and collaboration.” 2010 Annual Report

# JUVENILE PROBATION DEPARTMENT

Tom Brooks, Executive Director



## Executive Monthly Activity Report – August, 2016

Page 12 of 13 pages

### Average Daily Population - August\*

County Facilities (available beds)	2014				2015				2016			
	Black	Hispanic	White	Total	Black	Hispanic	White	Total	Black	Hispanic	White	Total
<b>Burnett Bayland Reception Center (144)</b>	<b>39</b>	<b>34</b>	<b>14</b>	<b>84</b>	<b>54</b>	<b>38</b>	<b>11</b>	<b>105</b>	<b>52</b>	<b>40</b>	<b>11</b>	<b>103</b>
Residential Assessment (12)	2	2	1	3	0	0	0	0	0	0	0	0
Drug Unit (24)	13	22	7	42	17	20	6	44	7	17	4	28
Brief Structural Intervention (24)	12	8	2	22	10	8	1	20	10	8	2	20
Psychological Unit (12)	8	0	3	11	0	0	0	0	0	0	0	0
Phoenix Unit (12)	4	2	1	6	16	5	2	23	16	4	4	24
Detention Unit (36)	0	0	0	0	11	5	2	18	19	11	1	31
Harris County Psychiatric Center (21)	7	7	2	15	12	5	6	23	13	4	5	22
Leadership Academy (96)	41	21	6	69	47	31	9	87	51	27	11	90
Harris County Youth Village (128)	41	23	13	77	36	43	12	91	43	36	14	93
Detention Center (250)	127	65	20	213	135	60	19	215	139	72	21	233
Detention Assessment Unit	13	14	5	32	17	18	3	38	18	11	7	37
Detention Girls Intervention	0	0	0	0	0	0	0	0	3	1	1	3
<b>Private Placement</b>												
Texsun Management Group	11	2	3	16	10	3	4	17	2	0	0	2
Center for Success & Independence	1	4	1	6	1	5	0	5	1	2	1	3
Embracing Destiny Foundation	2	0	0	2	0	0	0	0	0	0	0	0
Gulf Coast Trade Center	1	0	1	2	0	0	0	0	0	0	0	0
Hector Garza Center	6	5	5	16	0	0	0	0	0	0	0	0
Rockdale Justice Center	4	3	1	8	4	0	0	4	2	0	0	2
Renewed Strength Residential	1	0	0	1	0	0	0	0	0	0	0	0
Victoria County JJC	3	3	0	5	2	1	0	3	1	0	1	2
We Care Treatment Center	2	0	0	2	1	1	1	2	0	0	0	0
Boys Town	0	0	0	0	0	0	0	0	0	0	1	1
Lakeside Academy (Sequel Youth)	0	0	0	0	0	0	0	0	0	0	1	1
Mingus Mountain Estate	0	0	0	0	5	1	0	5	1	1	0	1
Pegasus Schools, Inc.	1	1	0	1	2	1	2	6	0	4	0	4
Clarinda Academy (Sequel Youth Service)	0	0	0	0	3	2	2	6	0	0	0	0
Glen Mills Schools	0	0	0	0	3	5	2	10	11	2	0	13
Woodward Academy	0	0	0	0	0	0	2	3	1	1	1	3
Mountain Home Academy	0	0	0	0	0	0	1	1	1	0	0	1

\*Only placements with youth enrolled during the month are shown. Totals are not exact due to other races that are not shown and due to rounding effects because average numbers are used. The quantity of bed space increased at HCP from 16 to 21 as of March 2015. BBRC Pre-Adjudicated Detention was opened in June 2015. The post-adjudicated Detention Girls Intervention Unit launched April 2016.



# JUVENILE PROBATION DEPARTMENT

Tom Brooks, Executive Director



## Executive Monthly Activity Report – August, 2016

Page 13 of 13 pages

### Murder Activity\*

	2006	2007	2009	2010	2011	2012	2013	2014	2015	Jan-Aug 2016
<b>Age</b>										
10										
11										
12			2							
13	1						1			
14		1	4		1			1		
15	6	7		3	2	2	2	1	2	1
16+	9	6	10	15	7	6	6	6	5	7
<b>TOTAL</b>	<b>16</b>	<b>14</b>	<b>16</b>	<b>18</b>	<b>10</b>	<b>8</b>	<b>9</b>	<b>8</b>	<b>7</b>	<b>8</b>
<b>Race/Sex</b>										
Black Female		1	2	1	2					
Black Male	3	6	8	11		1	8	4	6	3
Hispanic Female		1				1				1
Hispanic Male	8	1	5	6	7	4	1	4	1	3
Asian Female										
Asian Male										
White Female	2					1				
White Male	3	5	1		1	1				1
Other Female										
Other Male										
<b>TOTAL</b>	<b>16</b>	<b>14</b>	<b>16</b>	<b>18</b>	<b>10</b>	<b>8</b>	<b>9</b>	<b>8</b>	<b>7</b>	<b>8</b>
<b>School District</b>										
Aldine	4	1	1		1	2		1		
Alief			1			2		1		1
Brazos School					2					
Cypress-Fairbanks	2			1		2		1		
Deer Park										
Galena Park			4	2			1			1
Goose Creek		1						1		
Houston	3	2	4	2	2		2	2	4	
Houston Can Academy					1		1			
Humble										1
Katy	1	1	1							1
Klein		1								
Lamar										1
North Forest			1	5			1			
Pasadena				1						1
Clear Creek								1		
Spring			3	3			1		1	
Spring Branch									1	
GED										1
Home School										1
College/University		1	1							
Private/Parochial	2	4		3			2		1	
Out of County	1	1		1	2	1		1		
Not Available	3	2			2	1	1			

\*Of the 2016 homicide charges, there were eight (8) actual deaths. Please note referrals are not unique to individuals.



"...exciting possibilities afforded only by living lives within the law." 2008 Annual Report