

# JUVENILE PROBATION DEPARTMENT

Tom Brooks, Executive Director



## Executive Monthly Activity Report – February, 2016

### 2016 Referral

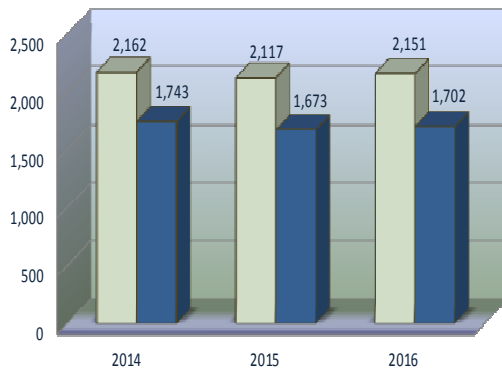
Charges Received	
January	938
February	1,213
March	
April	
May	
June	
July	
August	
September	
October	
November	
December	
<b>TOTAL</b>	<b>2,151</b>
<b>AVERAGE</b>	<b>1,076</b>
<b>YOUTH</b>	<b>1,702</b>

### Harris County Census Data Comparisons\*

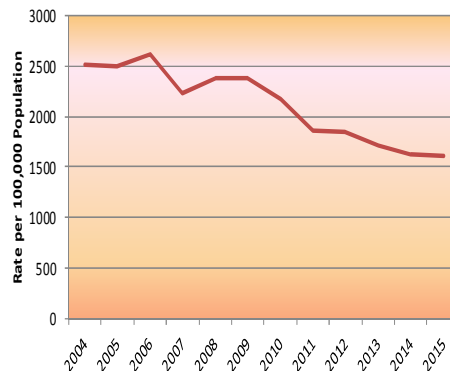
	Census Data*	Delinquent Conduct		Felony		Murder	
		Referrals	Rate/100,000	Referrals	Rate/100,000	Referrals	Rate/100,000
2004	444,722	11,184	2,515	3,703	833	14	3
2005	448,861	11,187	2,492	3,725	830	13	3
2006	451,874	11,790	2,609	3,850	852	16	4
2007	454,279	10,974	2,416	3,594	791	14	3
2008	453,639	10,333	2,278	3,107	685	27	6
2009	452,494	10,795	2,386	2,899	641	16	4
2010	453,180	9,845	2,172	2,398	529	18	4
2011	458,330	8,554	1,866	2,231	487	10	2
2012	432,521	7,988	1,847	2,038	471	8	2
2013	436,452	7,496	1,717	2,019	463	9	2
2014	440,692	7,188	1,631	2,024	459	8	2
2015	444,725	7,153	1,608	2,123	477	7	2

\*Census Project Data for youth aged 10-17

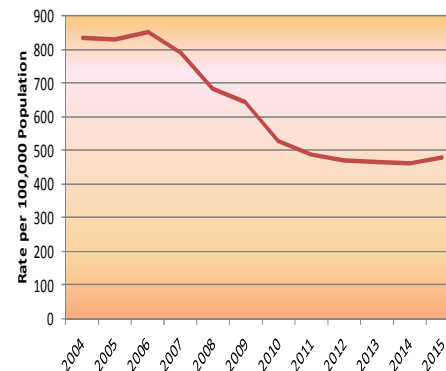
Charges Received as Compared to Youth Involved January-February 2014-2016



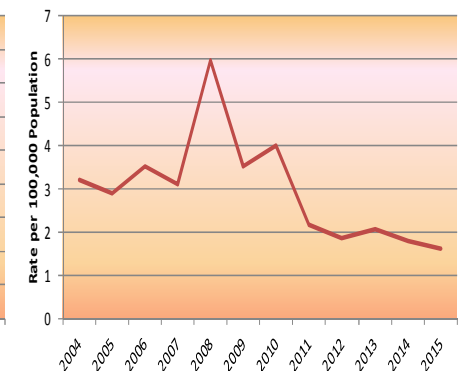
Delinquent Conduct Referrals



Felony Referrals



Murder Referrals



# JUVENILE PROBATION DEPARTMENT

Tom Brooks, Executive Director



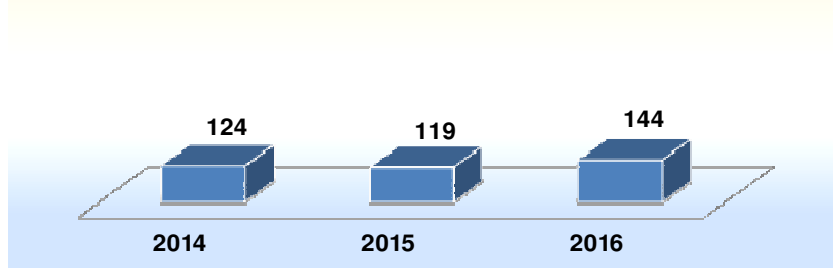
## Executive Monthly Activity Report – February, 2016

Page 2 of 13 pages

### Type of Charge Based on Crime Category

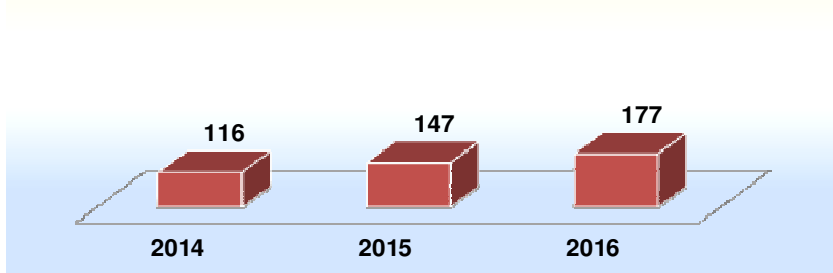
	Jan	Feb	Mar	Apr	May	Jun	Jul	Aug	Sep	Oct	Nov	Dec	TOTAL	% TOTAL
Person (Felony)	75	102											177	8.2%
Person (Misdemeanor)	81	103											184	8.6%
Property (Felony)*	77	67											144	6.7%
Property (Misdemeanor)	145	139											284	13.2%
Illegal Substance	91	174											265	12.3%
All Others	119	132											251	11.7%
CHINS	15	29											44	2.0%
Violations of Probation	81	113											194	9.0%
Administrative Offenses	254	354											608	28.3%
<b>TOTAL</b>	<b>938</b>	<b>1213</b>	<b>0</b>	<b>0</b>	<b>0</b>	<b>0</b>	<b>0</b>	<b>0</b>	<b>0</b>	<b>0</b>	<b>0</b>	<b>0</b>	<b>2151</b>	<b>100.0%</b>

### Felony Crimes Against Property\* January - February 2014-2016



\*Arson, Burglary, Theft, AutoTheft, Unauthorized Use of a Motor Vehicle, and Criminal Mischief.

### Felony Crimes Against Persons\* January - February 2014-2016



\*Murder, Robbery, Assault, and Sexual Assault.



"...reassure our young people that they can overcome certain obstacles and go on to become productive members of society." 2010 Annual

# JUVENILE PROBATION DEPARTMENT

Tom Brooks, Executive Director



## Executive Monthly Activity Report – February, 2016

Page 3 of 13 pages

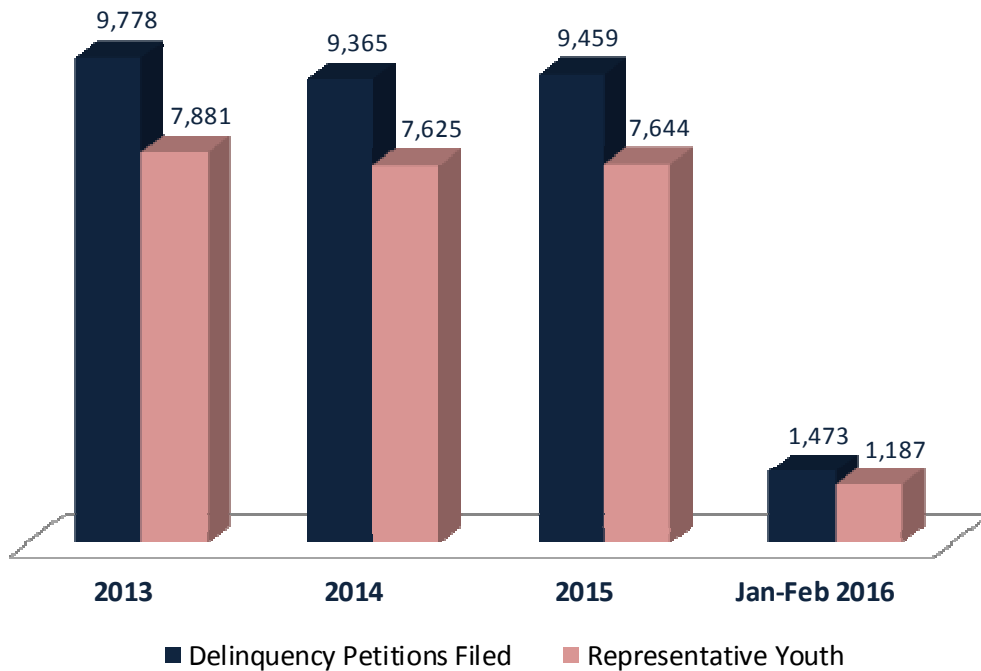
### *Cases Assigned and Disposed February 2016*

	313th		314th		315th		TOTALS	
	Assigned	Disposed	Assigned	Disposed	Assigned	Disposed	ASSIGNED	DISPOSED
<b>Petitions*</b>	506	565	493	535	474	541	1473	1641
<b>Youth Involved</b>	411	435	402	416	374	356	1187	1207

\*Cases that are off the docket, withdrawn, under advisement, passed, or included with another referral have been deleted from these counts.

### *Petitions Filed and Representative Youth*

	Delinquency Petitions Filed	Representative Youth
Jan-Feb 2016	1,473	1,187
2015	9,459	7,644
2014	9,365	7,625
2013	9,778	7,881



# JUVENILE PROBATION DEPARTMENT

Tom Brooks, Executive Director



## Executive Monthly Activity Report – February, 2016

Page 4 of 13 pages

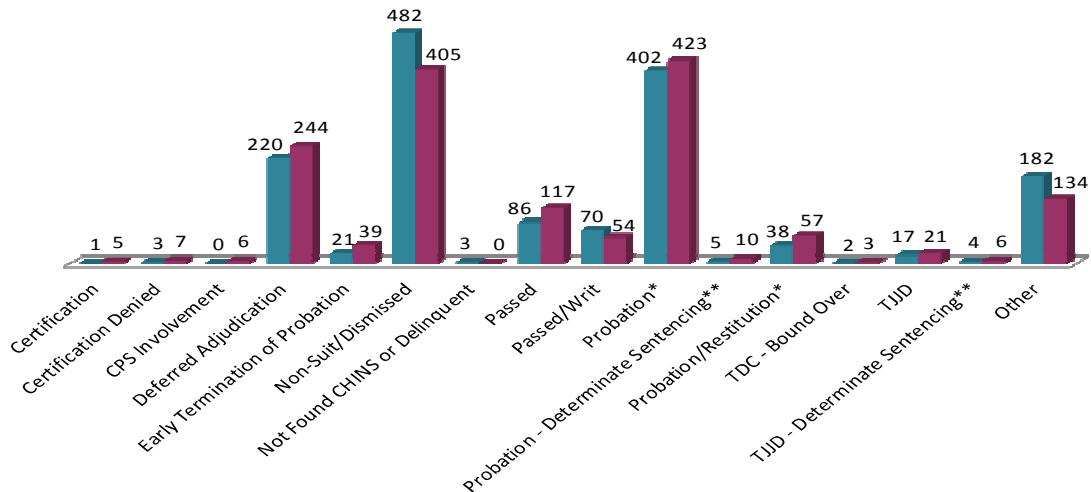
### Court Activity\* January - February 2016

COURT DECISIONS	Black		Hispanic		White		Other		DECISION	
	Female	Male	Female	Male	Female	Male	Female	Male	YOUTH	TOTAL
Certification	0	3	0	1	0	1	0	0	5	7
Certification Denied	0	5	0	1	0	1	0	0	7	10
CPS Involvement	1	3	0	0	1	1	0	0	6	11
Deferred Adjudication	28	72	16	53	24	49	1	1	244	261
Early Termination of Probation	6	13	1	11	1	7	0	0	39	63
Non-Suit/Dismissed	38	148	21	103	20	73	1	1	405	456
Not Found CHINS or Delinquent	0	0	0	0	0	0	0	0	0	0
Passed	22	39	11	17	9	19	0	0	117	136
Passed/Writ	8	13	6	17	2	8	0	0	54	79
Probation*	38	156	32	121	16	56	0	4	423	628
Probation - Determinate Sentencing**	0	4	0	5	0	1	0	0	10	10
Probation/Restitution*	2	28	2	16	1	8	0	0	57	65
TDC - Bound Over	0	2	0	1	0	0	0	0	3	3
TJJD	1	15	1	2	0	2	0	0	21	30
TJJD - Determinate Sentencing**	0	3	0	2	0	1	0	0	6	8
Other	16	49	6	36	8	19	0	0	134	159
<b>TOTAL</b>	<b>160</b>	<b>553</b>	<b>96</b>	<b>386</b>	<b>82</b>	<b>246</b>	<b>2</b>	<b>6</b>	<b>1531</b>	<b>1926</b>

\*Includes Changes of Custody. Youth may be counted multiple times if received multiple decisions within the noted time period.

\*\*Approximate numbers – using declared determinate sentencing (DDS) as court result.

### Youth Comparison January - February 2015 / 2016



"...detering future delinquency and setting youth on the path to successful, wholesome futures." 2009 Annual Report

**JUVENILE PROBATION DEPARTMENT**

*Tom Brooks, Executive Director*



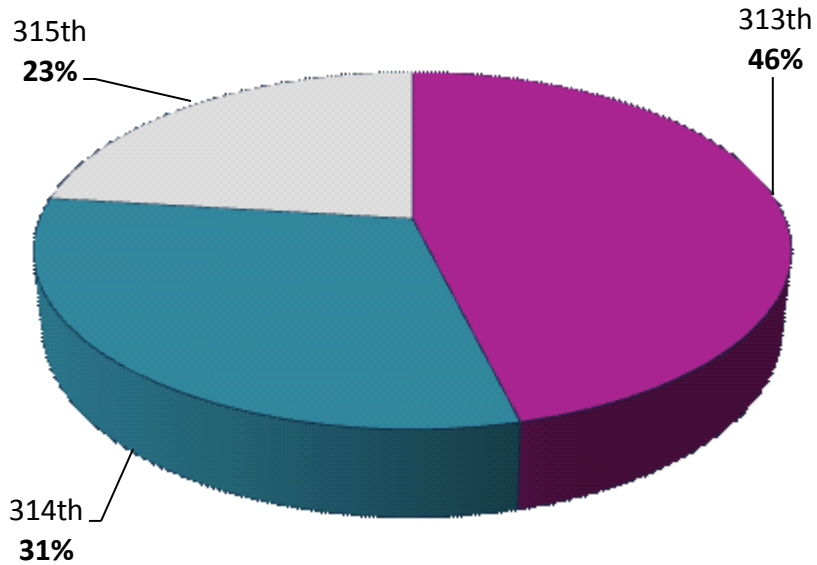
**Executive Monthly Activity Report – February, 2016**

Page 5 of 13 pages

*TJJD Dispositions by Court*

Disposition Year	Disposition	313th		314th		315th		TOTAL	TOTAL
		Youth	Dispositions	Youth	Dispositions	Youth	Dispositions	Youth	Dispositions
<i>Jan-Feb 2016</i>	TJJD	12	19	8	9	6	10	26	38
<i>2015</i>	TJJD	70	107	74	100	36	54	180	261
<i>2014</i>	TJJD	38	59	38	61	26	41	102	161
<i>2013</i>	TJJD	55	75	46	72	22	39	123	186

*TJJD Commitments By Court (Youth)  
January - February 2016*



**JUVENILE PROBATION DEPARTMENT**

*Tom Brooks, Executive Director*



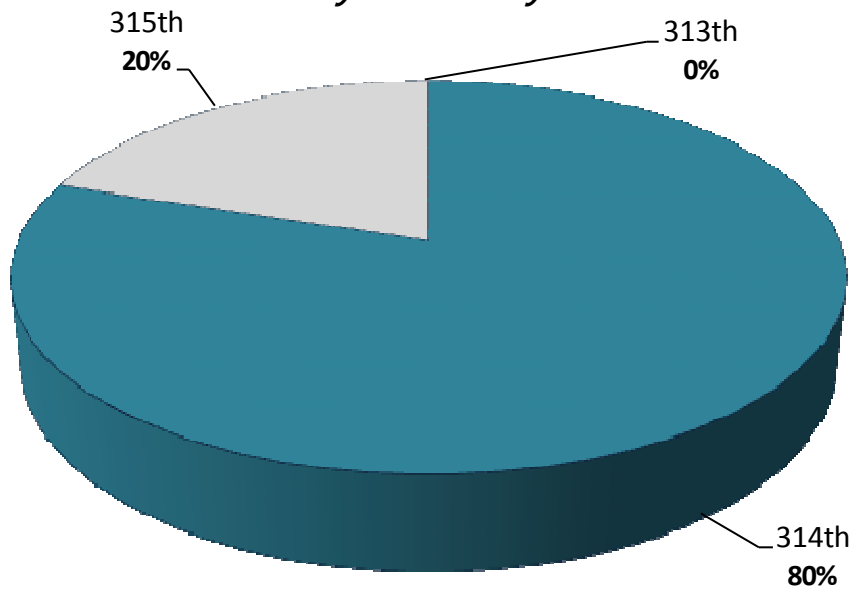
**Executive Monthly Activity Report – February, 2016**

Page 6 of 13 pages

*Certifications*

Disposition Year	Court			Youth Total	Petition Total
	313	314	315		
2016	0	4	1	5	7
2015	11	10	7	28	46
2014	11	20	3	34	63
2013	17	11	9	37	44
2012	16	15	1	32	47
2011	16	19	3	38	53
2010	27	14	19	60	87
2009	22	18	20	60	84
2008	34	31	23	88	135
2007	40	26	16	82	114
2006	42	26	22	90	120
2005	28	10	18	56	93

*Certifications by Court (Youth)  
January - February 2016*



# JUVENILE PROBATION DEPARTMENT

Tom Brooks, Executive Director



## Executive Monthly Activity Report – February, 2016

Page 7 of 13 pages

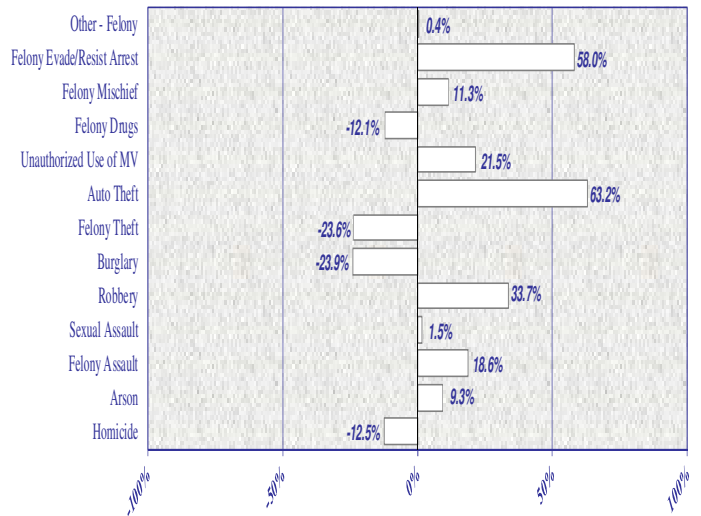
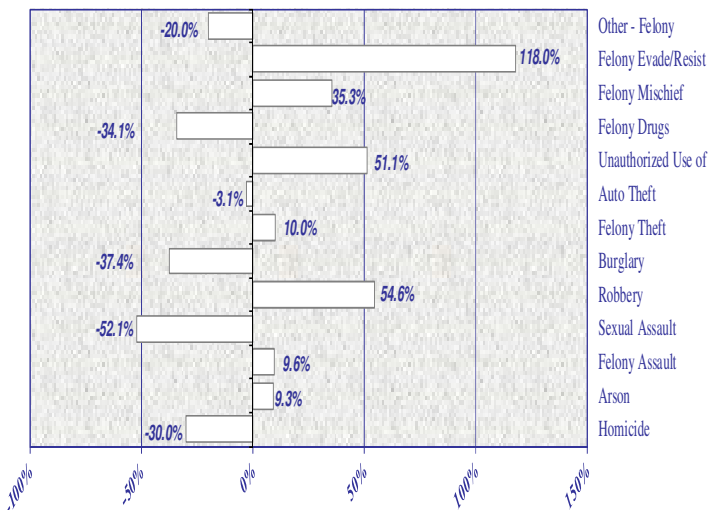
### Most Serious Charge Activity\*

	Jan-Feb											
	2005	2006	2007	2008	2009	2010	2011	2012	2013	2014	2015	2016
Homicide	13	16	14	27	16	18	10	8	9	8	7	1
Arson	57	57	29	53	56	52	43	47	31	43	47	3
Felony Assault	419	402	351	328	336	351	303	295	304	279	331	58
Sexual Assault	249	231	171	149	148	142	142	128	113	67	68	21
Robbery	330	357	374	351	345	324	282	263	357	326	436	97
Burglary	696	703	703	685	788	552	542	514	450	447	340	54
Felony Theft	69	110	106	84	110	84	99	110	117	144	110	33
Auto Theft	52	47	39	33	22	22	32	32	20	19	31	5
Unauthorized Use of MV	276	251	222	183	153	122	130	101	106	163	198	35
Felony Drugs	665	744	740	407	349	309	232	183	159	174	153	33
Mischief/Felony	68	48	84	59	82	53	51	62	57	62	69	14
Evade/Resist Arrest Felony	99	122	85	81	80	55	50	53	60	69	109	30
Other - Felony	427	495	409	472	399	313	313	242	236	223	224	34
<b>Serious Offense Totals</b>	<b>3420</b>	<b>3583</b>	<b>3327</b>	<b>2912</b>	<b>2884</b>	<b>2397</b>	<b>2229</b>	<b>2038</b>	<b>2019</b>	<b>2024</b>	<b>2123</b>	<b>418</b>
<b>Total Referrals</b>	<b>23,480</b>	<b>24,877</b>	<b>23,164</b>	<b>20,885</b>	<b>19,828</b>	<b>17,978</b>	<b>15,873</b>	<b>14,402</b>	<b>13,793</b>	<b>12,492</b>	<b>12,249</b>	<b>2,151</b>
<b>Serious Offense Percent</b>	<b>15%</b>	<b>14%</b>	<b>14%</b>	<b>14%</b>	<b>15%</b>	<b>13%</b>	<b>14%</b>	<b>14%</b>	<b>15%</b>	<b>16%</b>	<b>17%</b>	<b>19%</b>

\*This chart contains selected offense categories which are summed and shown as a percentage of ALL ACTIVITY TOTALS

### Five Year Offense Comparison Percentage Change, 2011-2015

### Most Current Completed Year Comparison Percentage Change, 2014-2015



"...holding youth accountable while offering support, guidance and direction to help them succeed." 2009 Annual Report

# JUVENILE PROBATION DEPARTMENT

Tom Brooks, Executive Director



## Executive Monthly Activity Report – February, 2016

Page 8 of 13 pages

The following table presents a comparison of **January-February 2015** referral activity as contrasted to **January-February 2016** referral activity. During this month, the data shows an overall 1.6% increase in referral activity. Notable increases are found for Felony Mischief (180.0%), Sexual Assault (100.0%), Burglary (38.5%), and Felony Theft (32.0%). Several decreases include Arson (-76.9%), Misdemeanor A/B Other (-23.7%), Misdemeanor A/B Trespass (-21.1%), and Misdemeanor A/B Theft (-20.3%). Less serious offenses decreased by 8.5%.

**There was 1 referral\* for homicide during January-February 2016, compared to 0 for the same time period of 2015.**

### Offense Charge per Referral\*

Offense	Black		Hispanic		White		Other		Jan-Feb	Jan-Feb	Jan-Feb
	Female	Male	Female	Male	Female	Male	Female	Male	2015	2016	% Change
Homicide*	0	0	0	1	0	0	0	0	0	1	100.0%
Arson	1	0	2	0	0	0	0	0	13	3	-76.9%
Assault - Felony	8	25	5	12	2	6	0	0	48	58	20.8%
- MA/MB	43	49	21	26	16	27	0	2	149	184	23.5%
Sexual Assault	0	13	0	5	0	3	0	0	7	21	100.0%
Robbery	3	66	1	23	0	2	0	2	92	97	5.4%
Burglary	0	20	1	16	0	17	0	0	39	54	38.5%
Theft - Felony	7	17	0	8	1	0	0	0	25	33	32.0%
- MA/MB	27	47	17	24	17	22	3	4	202	161	-20.3%
Auto Theft	1	0	1	3	0	0	0	0	6	5	-16.7%
Unauthorized Use of a Motor Vehicle	0	17	1	12	0	5	0	0	31	35	12.9%
Drugs - Felony	2	5	2	9	2	13	0	0	40	33	-17.5%
- MA/MB	8	51	15	84	14	56	0	3	270	231	-14.4%
Mischief/Felony	3	4	1	4	0	2	0	0	5	14	180.0%
- MA/MB	4	13	9	14	1	11	0	0	42	52	23.8%
Evade/Resisting Arrest Felony	1	13	1	10	1	4	0	0	25	30	20.0%
- MA/MB	5	42	8	31	4	20	0	1	118	111	-5.9%
DWI - MA/MB	0	0	0	1	0	0	0	0	0	1	100.0%
Trespass - MA/MB	1	38	8	18	2	4	0	0	90	71	-21.1%
Other - Felony	1	10	1	13	1	8	0	0	41	34	-17.1%
- MA/MB	5	20	9	26	3	10	0	1	97	74	-23.7%
<b>Sub-Total</b>	<b>120</b>	<b>450</b>	<b>103</b>	<b>340</b>	<b>64</b>	<b>210</b>	<b>3</b>	<b>13</b>	<b>1340</b>	<b>1303</b>	<b>-2.8%</b>
Assault - MC	0	0	0	0	0	0	0	0	0	0	0.0%
Theft - MC	0	0	0	0	0	0	0	0	0	0	0.0%
Drugs - MC	0	0	0	0	0	0	0	0	0	0	0.0%
Other - MC	0	0	0	0	0	0	0	0	0	0	0.0%
Disorderly Conduct	0	0	0	0	0	0	0	0	1	0	-100.0%
City Ordinance Violations	0	0	0	0	0	0	0	0	0	0	0.0%
Violations of Probation	14	87	11	57	6	18	0	1	211	194	-8.1%
<b>Sub-Total</b>	<b>14</b>	<b>87</b>	<b>11</b>	<b>57</b>	<b>6</b>	<b>18</b>	<b>0</b>	<b>1</b>	<b>212</b>	<b>194</b>	<b>-8.5%</b>
Runaways - CHINS	4	10	4	10	6	9	1	0	36	44	22.2%
Other CHINS	0	0	0	0	0	0	0	0	0	0	0.0%
TJJD Runaways	0	0	0	2	0	0	0	0	1	2	100.0%
Administrative Actions *	54	252	46	162	25	64	1	4	528	608	15.2%
<b>Sub-Total</b>	<b>58</b>	<b>262</b>	<b>50</b>	<b>174</b>	<b>31</b>	<b>73</b>	<b>2</b>	<b>4</b>	<b>565</b>	<b>654</b>	<b>15.8%</b>
<b>GRAND TOTAL</b>	<b>192</b>	<b>799</b>	<b>164</b>	<b>571</b>	<b>101</b>	<b>301</b>	<b>5</b>	<b>18</b>	<b>2117</b>	<b>2151</b>	<b>1.6%</b>

\*Administrative Actions may include: motion to modify order, hold as material witness, request for change of custody, issuance of pick-up order, or motion for release and transfer. \*Of the 1 homicide offense referrals for 2016, there was 1 actual death.





# JUVENILE PROBATION DEPARTMENT

Tom Brooks, Executive Director



## Executive Monthly Activity Report – February, 2016

Page 9 of 13 pages

### Top 10 Felony and Misdemeanor Offenses

Top 10 Felony Offenses Jan-Feb 2016	Black		Hispanic		White		Other		Jan-Feb	Jan-Feb	Jan-Feb
	Female	Male	Female	Male	Female	Male	Female	Male	2015	2016	% Change
Burglary of a Habitat (Felony 1)	0	11	1	3	0	9	0	0	27	24	-11.1%
Aggravated Robbery (Felony 1)	0	42	1	15	0	2	0	2	54	62	14.8%
Burglary of a Building (Jail Felony)	0	9	0	9	0	6	0	0	15	24	60.0%
Possession/Personal Use - Group 1, Less than 1 Gram (Jail Felony)	0	2	1	2	1	6	0	0	20	12	-40.0%
Unauthorized Use of a Motor Vehicle (Jail Felony)	0	17	1	12	0	5	0	0	31	35	12.9%
Robbery (Felony 2)	3	24	0	8	0	0	0	0	37	35	-5.4%
Aggravated Assault Uses Deadly Weapon (Felony 2)	0	4	0	3	0	1	0	0	6	8	33.3%
Assault, Bodily Injury Against Public Servant (Felony 3)	6	14	3	3	0	1	0	0	18	27	50.0%
Aggravated Sexual Assault - Children Under 14 Years of Age (Felony 1)	0	11	0	3	0	3	0	0	6	17	100.0%
Theft From Person of Another (Jail Felony)	5	10	0	2	0	0	0	0	11	17	54.5%
<b>TOTAL</b>	<b>14</b>	<b>144</b>	<b>7</b>	<b>60</b>	<b>1</b>	<b>33</b>	<b>0</b>	<b>2</b>	<b>225</b>	<b>261</b>	<b>16.0%</b>

Top 10 Misdemeanor Offenses Jan-Feb 2016	Black		Hispanic		White		Other		Jan-Feb	Jan-Feb	Jan-Feb
	Female	Male	Female	Male	Female	Male	Female	Male	2015	2016	% Change
Theft - \$50 - \$499.99 Value (Misd B)	18	24	10	6	13	11	2	2	154	86	-44.2%
Assault with Bodily Injury (Misd A)	32	39	15	18	9	19	0	2	105	134	27.6%
Possession of Marijuana for Personal Use - Less than 2 oz (Misd B)	7	48	13	72	8	50	0	3	229	201	-12.2%
Evading Arrest Detention (Misd A)	4	34	3	26	4	18	0	1	90	90	0.0%
Theft - \$500 - \$1,500 Value (Misd A)	6	10	4	8	2	1	0	0	22	31	40.9%
Criminal Trespass - General (Misd B)	1	31	6	13	2	4	0	0	78	57	-26.9%
Assault-Family Member (Misd A)	11	10	6	8	7	8	0	0	46	50	8.7%
Mischief - \$50-\$499.99 Property Damage (Misd B)	3	10	8	8	0	4	0	0	34	33	-2.9%
Burglary of Motor Vehicle (Misd A)	0	10	0	5	1	8	0	2	27	26	-3.7%
Terroristic Threat - General (Misd B)	0	11	3	2	1	2	0	1	22	20	-9.1%
<b>TOTAL</b>	<b>82</b>	<b>227</b>	<b>68</b>	<b>166</b>	<b>47</b>	<b>125</b>	<b>2</b>	<b>11</b>	<b>807</b>	<b>728</b>	<b>-9.8%</b>



# JUVENILE PROBATION DEPARTMENT

Tom Brooks, Executive Director



## Executive Monthly Activity Report – February, 2016

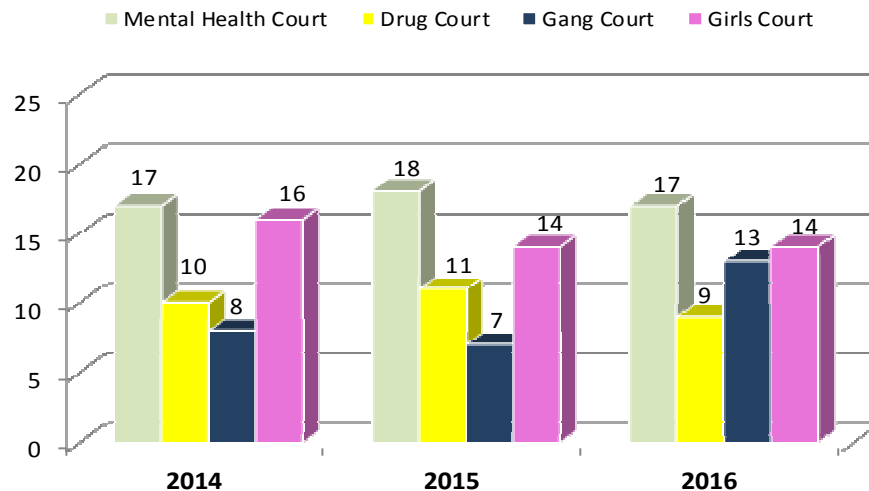
Page 10 of 13 pages

### Field Services Activity\*

Type of Probation Service	February					
	2014		2015		2016	
	Caseload	JPO Avg	Caseload	JPO Avg	Caseload	JPO Avg
Community Supervision	<b>1614</b>	27	<b>1468</b>	25	<b>1667</b>	29
Adjudication	901		780		938	
Deferred Adjudication	713		688		729	
Specialized Supervision	<b>972</b>		<b>983</b>		<b>807</b>	
CUPS 9	203		205		188	
Mental Health	127	20	125	16	128	17
Sex Offender	76	14	80	14	60	16
CUPS 7	227		219		244	
Aftercare	227	14	219	16	244	17
CUPS 6	365		374		277	
Female Intervention	48	14	51	21	21	9
Intensive	317	14	323	17	256	14
YESS Program	177	17	185	18	98	12
Deferred Prosecution	<b>502</b>		<b>442</b>		<b>365</b>	
90-Day	273	10	279	12	215	9
180 Day	229	28	163	23	150	18
<b>Total</b>	<b>3088</b>		<b>2893</b>		<b>2839</b>	

\*Youth caseload is based on a daily caseload average for the month shown. JPO caseload average is calculated using the last JPO of record for the casefiles for the month shown. Effective November 1, 2015, the name of the Gang Unit was changed to the Youth Empowerment Services and Supervision (YESS) Program.

### Specialized Court Activity – February\*\*



\*\*Specialized Court Activity represents average youth count for the month shown.



# JUVENILE PROBATION DEPARTMENT

Tom Brooks, Executive Director



## Executive Monthly Activity Report – February, 2016

Page 11 of 13 pages

### Youth Admitted to Facilities\*

Facilities	Year Ending		Jan-Feb 2016
	2014	2015	
<b>Burnett-Bayland Reception Center</b>	<b>552</b>	<b>482</b>	<b>55</b>
Residential Assessment (BRU)	125	92	0
Drug Unit (BDU)	149	125	16
Brief Structural Intervention (BIU)	166	188	33
Psychological Unit (BMU)	47	0	0
Phoenix Unit (BPU)	44	77	6
Transition Unit (BTU)	21	0	0
<b>Leadership Academy (HLA)</b>	<b>219</b>	<b>274</b>	<b>37</b>
<b>Youth Village (HYV)</b>	<b>251</b>	<b>245</b>	<b>36</b>
County Post-Adjudication Subtotal	1022	1001	128
<b>Private Placement</b>	<b>165</b>	<b>140</b>	<b>14</b>
Boys Town (BOY)	1	3	0
TMG/Hays County Juv Ctr (CCI)	43	47	3
Clarinda Academy (CLR)	0	7	0
Center for Success (CSI)	11	11	0
Everyday Life (EDL)	5	0	0
Gulf Coast Trade Ctr (GCT)	8	0	0
Glen Mills Schools (GMS)	2	16	4
Hector Garza Ctr (HGC)	29	0	0
Lakeside Academy (LSA)	0	1	0
Mingus Mountain Estate (MME)	0	9	1
Mountain Home Academy (MTN)	0	2	0
Pegasus Schools, Inc. (PGS)	6	6	2
Rockdale Justice Ctr (RJC)	19	14	0
Renewed Strength Treatment Ctr (RSR)	3	0	0
Victoria County JJC (VIC)	19	12	1
We Care Treatment Ctr (WCT)	16	7	2
Woodward Academy (WWA)	0	5	1
All Post-Adjudication Subtotal	1187	1141	142
<b>Detention Center* (DET)</b>	<b>2888</b>	<b>2646</b>	<b>623</b>
Detention Residential Assessment (DRU)	752	782	138
<b>Burnett-Bayland Detention (BDP)</b>	<b>0</b>	<b>78</b>	<b>36</b>
<b>Harris County Psychiatric (HCP)</b>	<b>109</b>	<b>143</b>	<b>30</b>
<b>TOTAL</b>	<b>4936</b>	<b>4790</b>	<b>969</b>

\*Youth admitted is a count of individual youth, not the number of admits each may have had at that particular facility. If a youth was admitted at two different facilities he was counted once at each facility. The quantity of bed space increased at HCP from 16 to 21 as of March 2015. BBRC Pre-Adjudicated Detention was opened in June 2015.





# JUVENILE PROBATION DEPARTMENT

Tom Brooks, Executive Director

## Executive Monthly Activity Report – February, 2016

Page 12 of 13 pages

### Average Daily Population - February\*

County Facilities (available beds)	2014				2015				2016			
	Black	Hispanic	White	Total	Black	Hispanic	White	Total	Black	Hispanic	White	Total
<b>Burnett Bayland Reception Center (144)</b>	<b>46</b>	<b>31</b>	<b>11</b>	<b>89</b>	<b>38</b>	<b>36</b>	<b>14</b>	<b>86</b>	<b>47</b>	<b>40</b>	<b>12</b>	<b>100</b>
Residential Assessment (12)	3	2	0	5	3	3	1	5	0	0	0	0
Drug Unit (24)	18	19	3	41	10	18	8	36	11	13	6	31
Brief Structural Intervention (24)	6	3	3	12	7	8	2	17	8	9	2	19
Psychological Unit (12)	15	6	4	24	0	0	0	0	0	0	0	0
Phoenix Unit (12)	0	0	0	0	18	7	3	28	11	4	0	15
Transition Unit (12)	4	1	1	7	0	0	0	0	0	0	0	0
Detention Unit (36)	0	0	0	0	0	0	0	0	17	14	4	35
Harris County Psychiatric Center (21)	7	5	4	16	8	5	4	18	13	7	4	23
Leadership Academy (144)	42	24	4	70	47	23	4	75	51	25	7	83
Harris County Youth Village (170)	42	39	2	82	33	43	14	90	49	33	12	95
Detention Center (250)	100	56	25	181	149	75	23	247	137	72	24	235
Detention Assessment Unit	18	16	5	39	12	9	2	23	15	16	2	33
<b>Private Placement</b>												
Texsun Management Group	7	10	4	20	5	10	2	19	7	6	2	15
Center for Success & Independence	0	4	1	4	2	4	0	6	0	1	0	1
Embracing Destiny Foundation	2	0	1	2	0	0	0	0	0	0	0	0
Gulf Coast Trade Center	1	3	2	6	0	0	0	0	0	0	0	0
Hector Garza Center	7	5	6	17	0	0	0	0	0	0	0	0
Rockdale Justice Center	3	0	1	4	4	1	2	7	1	0	0	1
Renewed Strength Residential	2	0	1	2	0	0	0	0	0	0	0	0
Victoria County JJC	2	2	0	3	6	2	0	8	2	1	0	3
We Care Treatment Center	1	1	1	2	6	1	0	7	0	1	0	1
Boys Town	0	0	0	0	0	0	0	0	0	0	2	2
Lakeside Academy (Sequel Youth)	0	0	0	0	0	0	0	0	1	0	0	1
Mingus Mountain Estate	0	0	0	0	0	0	0	0	5	1	1	6
Pegasus Schools, Inc.	0	0	0	0	3	2	1	6	1	5	1	7
Clarinda Academy (Sequel Youth Service)	0	0	0	0	0	2	0	2	0	0	0	0
Glen Mills Schools	0	0	0	0	2	0	0	2	9	4	1	14
Woodward Academy	0	0	0	0	0	0	1	1	1	0	2	3
Mountain Home Academy	0	0	0	0	0	0	0	0	1	0	0	1

\*Only placements with youth enrolled during the month are shown. Totals are not exact due to other races that are not shown and due to rounding effects because average numbers are used. The quantity of bed space increased at HCP from 16 to 21 as of March 2015. BBRC Pre-Adjudicated Detention was opened in June 2015.



# JUVENILE PROBATION DEPARTMENT

Tom Brooks, Executive Director



## Executive Monthly Activity Report – February, 2016

Page 13 of 13 pages

### Murder Activity\*

	2006	2007	2009	2010	2011	2012	2013	2014	2015	Jan-Feb 2016
<b>Age</b>										
10										
11										
12			2							
13	1						1			
14		1	4		1			1		
15	6	7		3	2	2	2	1	2	
16+	9	6	10	15	7	6	6	6	5	1
<b>TOTAL</b>	<b>16</b>	<b>14</b>	<b>16</b>	<b>18</b>	<b>10</b>	<b>8</b>	<b>9</b>	<b>8</b>	<b>7</b>	<b>1</b>
<b>Race/Sex</b>										
Black Female		1	2	1	2					
Black Male	3	6	8	11		1	8	4	6	
Hispanic Female		1				1				
Hispanic Male	8	1	5	6	7	4	1	4	1	1
Asian Female										
Asian Male										
White Female	2					1				
White Male	3	5	1		1	1				
Other Female										
Other Male										
<b>TOTAL</b>	<b>16</b>	<b>14</b>	<b>16</b>	<b>18</b>	<b>10</b>	<b>8</b>	<b>9</b>	<b>8</b>	<b>7</b>	<b>1</b>
<b>School District</b>										
Aldine	4	1	1		1	2		1		
Alief			1			2		1		1
Brazos School					2					
Channelview										
Cypress-Fairbanks	2			1		2		1		
Deer Park										
Galena Park			4	2			1			
Goose Creek		1						1		
Houston	3	2	4	2	2		2	2	4	
Houston Can Academy					1		1			
Humble										
Katy	1	1	1							
Klein		1								
La Porte										
North Forest			1	5			1			
Pasadena				1						
Clear Creek								1		
Spring			3	3			1		1	
Spring Branch									1	
H.C.Education Dept.										
College/University		1	1							
Private/Parochial	2	4		3			2		1	
Juvenile Board Charter School										
Out of County	1	1		1	2	1		1		
Not Available	3	2			2	1	1			
<b>TOTAL</b>	<b>16</b>	<b>14</b>	<b>16</b>	<b>18</b>	<b>10</b>	<b>8</b>	<b>9</b>	<b>8</b>	<b>7</b>	<b>1</b>

\*Of the 2016 homicide charges, there was one (1) actual death. Please note referrals are not unique to individuals.

