

JUVENILE PROBATION DEPARTMENT

Tom Brooks, Executive Director



Executive Monthly Activity Report – July, 2016

2016 Referral

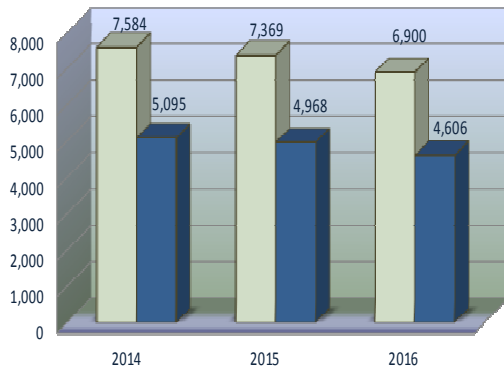
Charges Received	
January	931
February	1,210
March	1,057
April	1,084
May	1,111
June	891
July	616
August	
September	
October	
November	
December	
TOTAL	6,900
AVERAGE	986
YOUTH	4,606

Harris County Census Data Comparisons*

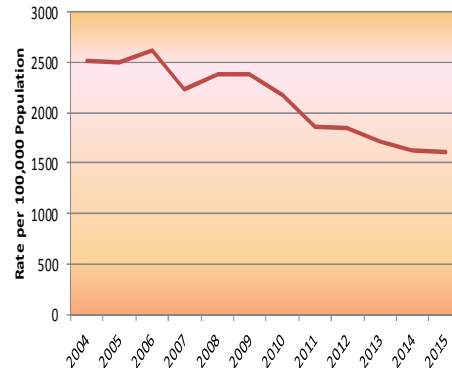
	Census Data*	Delinquent Conduct		Felony		Murder	
		Referrals	Rate/100,000	Referrals	Rate/100,000	Referrals	Rate/100,000
2004	444,722	11,184	2,515	3,703	833	14	3
2005	448,861	11,187	2,492	3,725	830	13	3
2006	451,874	11,790	2,609	3,850	852	16	4
2007	454,279	10,974	2,416	3,594	791	14	3
2008	453,639	10,333	2,278	3,107	685	27	6
2009	452,494	10,795	2,386	2,899	641	16	4
2010	453,180	9,845	2,172	2,398	529	18	4
2011	458,330	8,554	1,866	2,231	487	10	2
2012	432,521	7,988	1,847	2,038	471	8	2
2013	436,452	7,496	1,717	2,019	463	9	2
2014	440,692	7,188	1,631	2,024	459	8	2
2015	444,725	7,153	1,608	2,123	477	7	2

*Census Project Data for youth aged 10-17

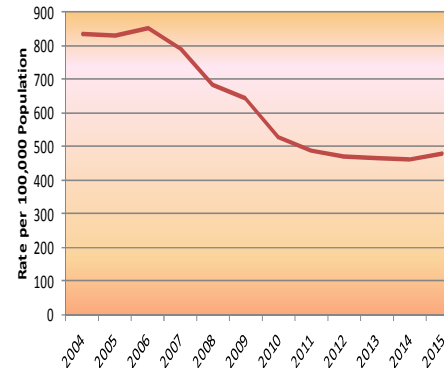
Charges Received as Compared to Youth Involved January-July 2014-2016



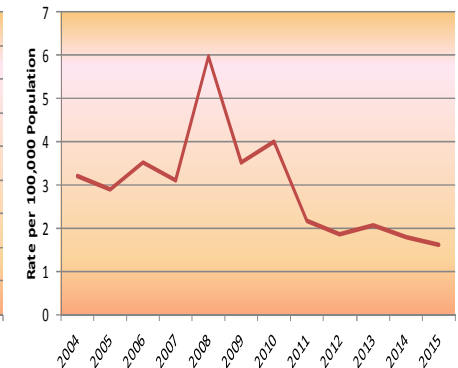
Delinquent Conduct Referrals



Felony Referrals



Murder Referrals



JUVENILE PROBATION DEPARTMENT

Tom Brooks, Executive Director

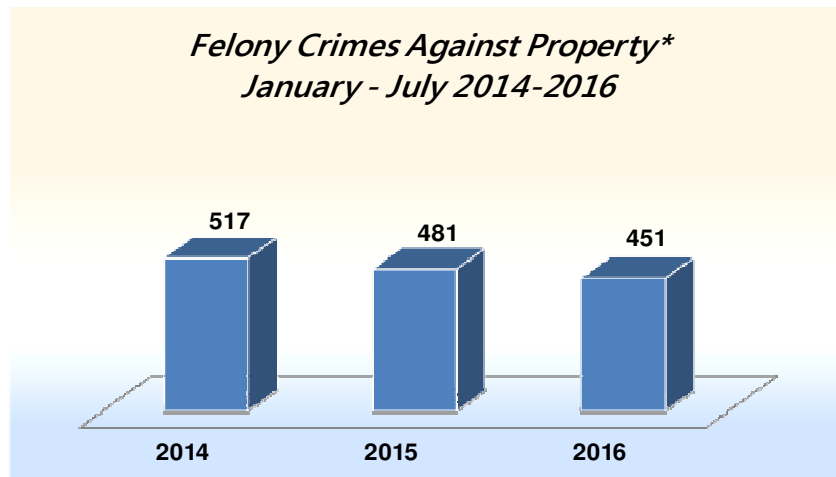


Executive Monthly Activity Report – July, 2016

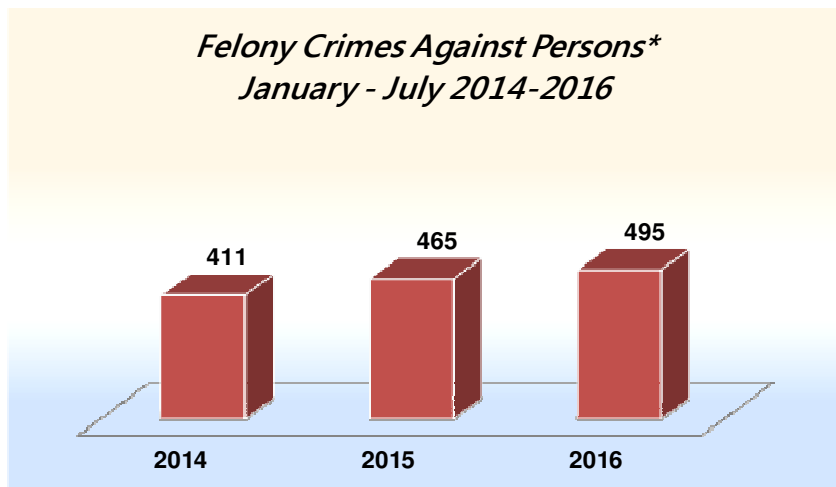
Page 2 of 13 pages

Type of Charge Based on Crime Category

	Jan	Feb	Mar	Apr	May	Jun	Jul	Aug	Sep	Oct	Nov	Dec	TOTAL	% TOTAL
Person (Felony)	75	102	78	83	64	52	41						495	7.2%
Person (Misdemeanor)	80	102	94	109	100	51	32						568	8.2%
Property (Felony)*	77	69	62	68	73	52	50						451	6.5%
Property (Misdemeanor)	145	139	129	191	144	141	89						978	14.2%
Illegal Substance	91	173	113	123	120	57	29						706	10.2%
All Others	118	130	122	143	122	115	69						819	11.9%
CHINS	15	29	24	35	30	26	3						162	2.3%
Violations of Probation	80	112	91	83	95	80	61						602	8.7%
Administrative Offenses	250	354	344	249	363	317	242						2119	30.7%
TOTAL	931	1210	1057	1084	1111	891	616	0	0	0	0	0	6900	100.0%



*Arson, Burglary, Theft, AutoTheft, Unauthorized Use of a Motor Vehicle, and Criminal Mischief.



*Murder, Robbery, Assault, and Sexual Assault.



"...reassure our young people that they can overcome certain obstacles and go on to become productive members of society." 2010 Annual

JUVENILE PROBATION DEPARTMENT

Tom Brooks, Executive Director



Executive Monthly Activity Report – July, 2016

Page 3 of 13 pages

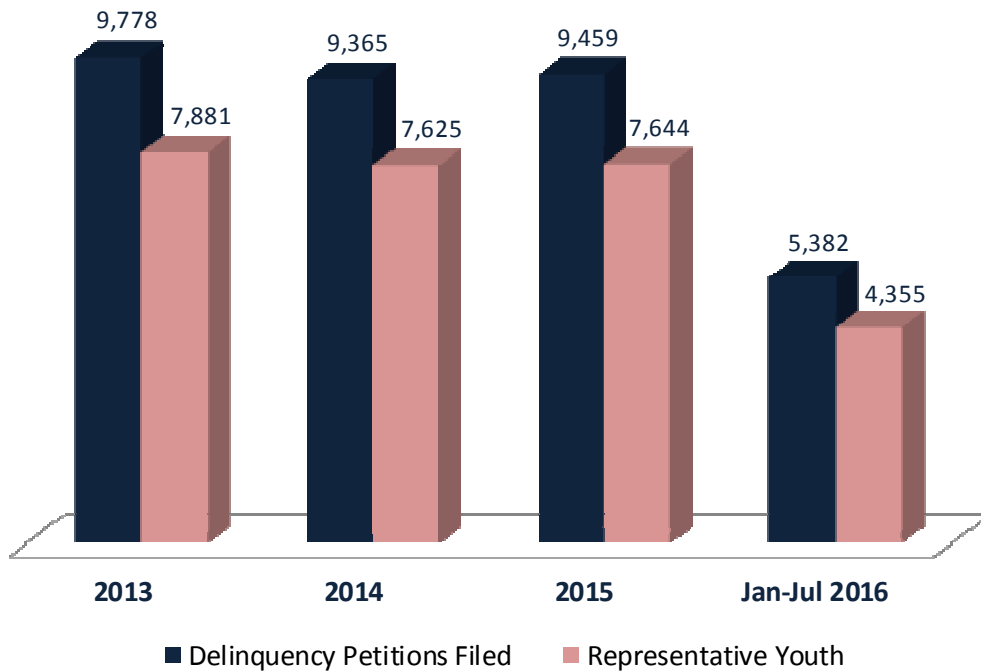
*Cases Assigned and Disposed
January - July 2016*

	313th		314th		315th		TOTALS	
	Assigned	Disposed	Assigned	Disposed	Assigned	Disposed	ASSIGNED	DISPOSED
Petitions*	1885	2202	1743	2017	1754	1995	5382	6214
Youth Involved	1526	1673	1415	1541	1414	1391	4355	4605

*Cases that are off the docket, withdrawn, under advisement, passed, or included with another referral have been deleted from these counts.

Petitions Filed and Representative Youth

	Delinquency Petitions Filed	Representative Youth
Jan-Jul 2016	5,382	4,355
2015	9,459	7,644
2014	9,365	7,625
2013	9,778	7,881



JUVENILE PROBATION DEPARTMENT

Tom Brooks, Executive Director



Executive Monthly Activity Report – July, 2016

Page 4 of 13 pages

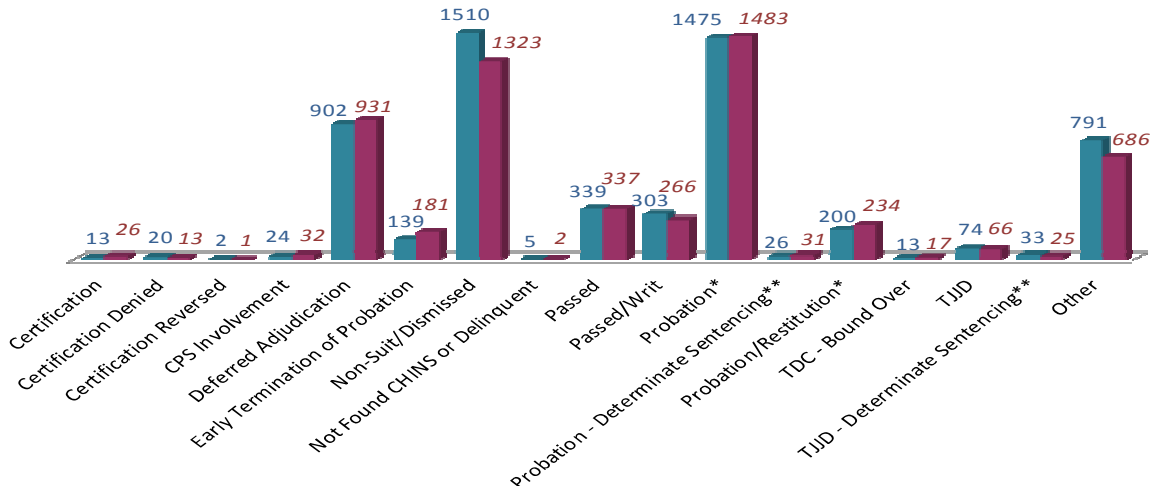
Court Activity* January - July 2016

COURT DECISIONS	Black		Hispanic		White		Other		DECISION	
	Female	Male	Female	Male	Female	Male	Female	Male	YOUTH	TOTAL
Certification	0	22	0	3	0	1	0	0	26	42
Certification Denied	1	7	0	4	0	1	0	0	13	19
Certification Reversed	0	0	0	0	1	0	0	0	1	1
CPS Involvement	4	11	2	3	3	9	0	0	32	48
Deferred Adjudication	130	269	96	198	73	158	2	5	931	1007
Early Termination of Probation	18	63	14	50	6	28	1	1	181	259
Non-Suit/Dismissed	166	430	96	304	82	233	3	9	1323	1486
Not Found CHINS or Delinquent	0	1	0	1	0	0	0	0	2	2
Passed	59	117	31	61	20	47	0	2	337	656
Passed/Writ	38	100	21	64	9	31	2	1	266	495
Probation*	157	559	119	427	46	168	2	5	1483	2493
Probation - Determinate Sentencing**	2	13	0	13	0	2	0	1	31	34
Probation/Restitution*	12	103	7	74	2	35	0	1	234	276
TDC - Bound Over	0	12	0	4	1	0	0	0	17	19
TJJD	4	34	1	15	1	11	0	0	66	100
TJJD - Determinate Sentencing**	0	13	0	11	0	1	0	0	25	45
Other	76	244	58	172	36	93	2	5	686	922
TOTAL	667	1998	445	1404	280	818	12	30	5654	7904

*Includes Changes of Custody. Youth may be counted multiple times if received multiple decisions within the noted time period.

**Approximate numbers – using declared determinate sentencing (DDS) as court result.

Youth Comparison January - July 2015 / 2016



JUVENILE PROBATION DEPARTMENT

Tom Brooks, Executive Director



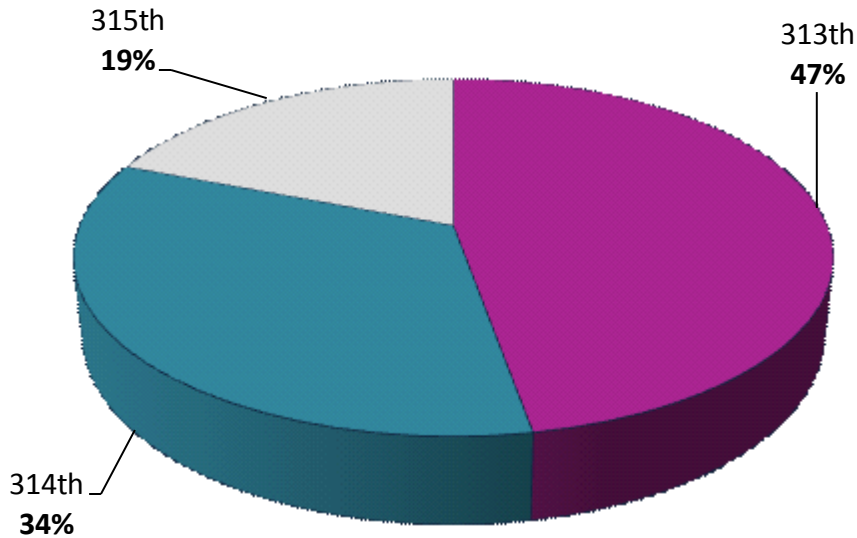
Executive Monthly Activity Report – July, 2016

Page 5 of 13 pages

TJJD Dispositions by Court

Disposition Year	Disposition	313th		314th		315th		TOTAL	TOTAL
		Youth	Dispositions	Youth	Dispositions	Youth	Dispositions	Youth	Dispositions
<i>Jan-Jul 2016</i>	TJJD	42	81	30	35	17	29	89	145
<i>2015</i>	TJJD	70	107	74	100	36	54	180	261
<i>2014</i>	TJJD	38	59	38	61	26	41	102	161
<i>2013</i>	TJJD	55	75	46	72	22	39	123	186

*TJJD Commitments By Court (Youth)
January - July 2016*



JUVENILE PROBATION DEPARTMENT

Tom Brooks, Executive Director



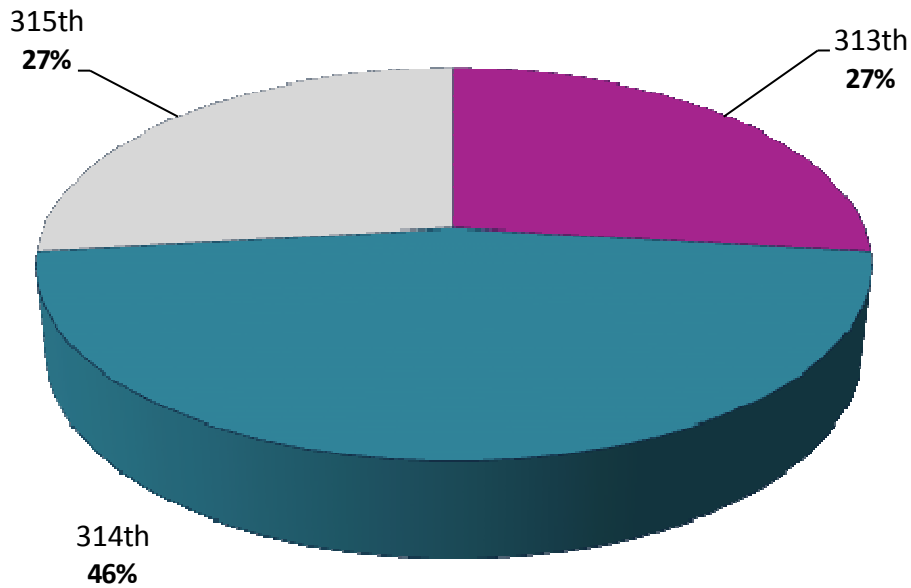
Executive Monthly Activity Report – July, 2016

Page 6 of 13 pages

Certifications

Disposition Year	Court			Youth Total	Petition Total
	313	314	315		
2016	7	12	7	26	42
2015	11	10	7	28	46
2014	11	20	3	34	63
2013	17	11	9	37	44
2012	16	15	1	32	47
2011	16	19	3	38	53
2010	27	14	19	60	87
2009	22	18	20	60	84
2008	34	31	23	88	135
2007	40	26	16	82	114
2006	42	26	22	90	120
2005	28	10	18	56	93

*Certifications by Court (Youth)
January - July 2016*



JUVENILE PROBATION DEPARTMENT

Tom Brooks, Executive Director



Executive Monthly Activity Report – July, 2016

Page 7 of 13 pages

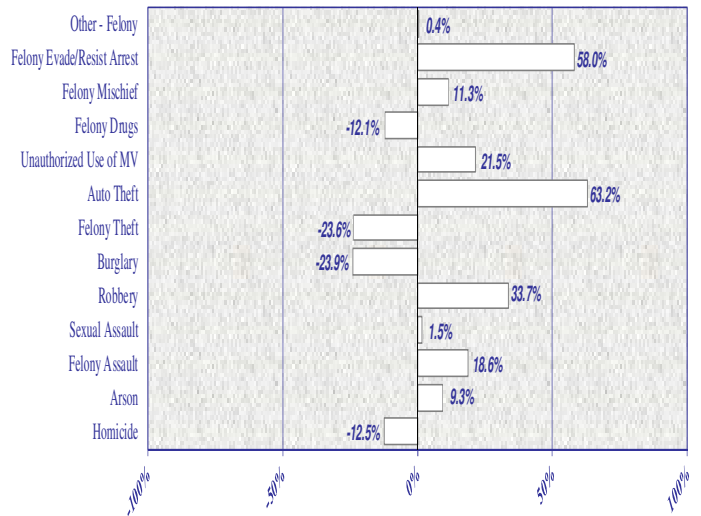
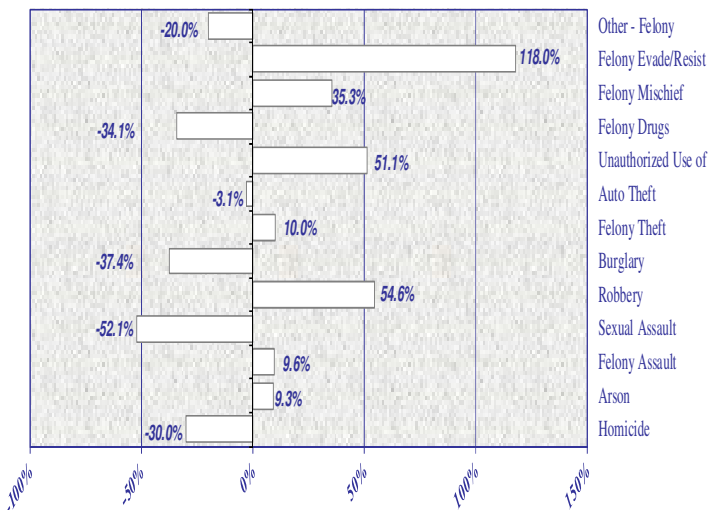
Most Serious Charge Activity*

	Jan-Jul											
	2005	2006	2007	2008	2009	2010	2011	2012	2013	2014	2015	2016
Homicide	13	16	14	27	16	18	10	8	9	8	7	7
Arson	57	57	29	53	56	52	43	47	31	43	47	14
Felony Assault	419	402	351	328	336	351	303	295	304	279	331	196
Sexual Assault	249	231	171	149	148	142	142	128	113	67	68	80
Robbery	330	357	374	351	345	324	282	263	357	326	436	212
Burglary	696	703	703	685	788	552	542	514	450	447	340	186
Felony Theft	69	110	106	84	110	84	99	110	117	144	110	70
Auto Theft	52	47	39	33	22	22	32	32	20	19	31	16
Unauthorized Use of MV	276	251	222	183	153	122	130	101	106	163	198	140
Felony Drugs	665	744	740	407	349	309	232	183	159	174	153	76
Mischief/Felony	68	48	84	59	82	53	51	62	57	62	69	25
Evade/Resist Arrest Felony	99	122	85	81	80	55	50	53	60	69	109	76
Other - Felony	427	495	409	472	399	313	313	242	236	223	224	128
Serious Offense Totals	3420	3583	3327	2912	2884	2397	2229	2038	2019	2024	2123	1226
Total Referrals	23,480	24,877	23,164	20,885	19,828	17,978	15,873	14,402	13,793	12,492	12,249	6,900
Serious Offense Percent	15%	14%	14%	14%	15%	13%	14%	14%	15%	16%	17%	18%

*This chart contains selected offense categories which are summed and shown as a percentage of ALL ACTIVITY TOTALS

Five Year Offense Comparison Percentage Change, 2011-2015

Most Current Completed Year Comparison Percentage Change, 2014-2015



"...holding youth accountable while offering support, guidance and direction to help them succeed." 2009 Annual Report



JUVENILE PROBATION DEPARTMENT

Tom Brooks, Executive Director

Executive Monthly Activity Report – July, 2016

Page 8 of 13 pages

The following table presents a comparison of **January-July 2015** referral activity as contrasted to **January-July 2016** referral activity. During this month, the data shows an overall 6.4% decrease in referral activity. Despite this decrease, increases are found for Sexual Assault (233.3%), Felony Assault (18.8%), Homicide (16.7%), and Misdemeanor A/B Assault (13.1%). Several decreases include Arson (-56.3%), Felony Mischief (-39.0%), Felony Drugs (-23.2%), and Misdemeanor A/B Theft (-23.2%). Less serious offenses decreased by 19.5%.

There were 7 referrals* for homicide during January-July 2016, compared to 6 for the same time period of 2015.

Offense Charge per Referral*

Offense	Black		Hispanic		White		Other		Jan-Jul	Jan-Jul	Jan-Jul
	Female	Male	Female	Male	Female	Male	Female	Male	2015	2016	% Change
Homicide*	0	3	1	2	0	1	0	0	6	7	16.7%
Arson	2	1	3	1	1	6	0	0	32	14	-56.3%
Assault - Felony	39	76	8	39	9	23	0	2	165	196	18.8%
- MA/MB	113	188	68	91	46	57	3	2	502	568	13.1%
Sexual Assault	2	40	0	20	4	13	0	1	24	80	233.3%
Robbery	7	130	3	59	1	10	0	2	270	212	-21.5%
Burglary	4	61	4	65	4	48	0	0	177	186	5.1%
Theft - Felony	9	39	2	12	2	6	0	0	74	70	-5.4%
- MA/MB	60	154	74	85	74	65	7	6	684	525	-23.2%
Auto Theft	0	6	1	6	1	2	0	0	20	16	-20.0%
Unauthorized Use of a Motor Vehicle	1	80	3	35	3	16	1	1	137	140	2.2%
Drugs - Felony	3	16	3	32	5	16	1	0	99	76	-23.2%
- MA/MB	23	136	43	233	43	141	3	3	692	625	-9.7%
Mischief/Felony	3	9	1	5	1	6	0	0	41	25	-39.0%
- MA/MB	19	58	11	41	5	23	0	1	142	158	11.3%
Evade/Resisting Arrest Felony	1	39	2	20	2	11	0	1	72	76	5.6%
- MA/MB	19	132	17	90	9	63	0	3	357	333	-6.7%
DWI - MA/MB	0	0	0	1	0	3	0	0	2	4	100.0%
Trespass - MA/MB	25	131	18	64	7	42	1	2	328	290	-11.6%
Other - Felony	14	45	4	37	1	26	0	1	125	128	2.4%
- MA/MB	30	98	19	73	14	42	0	1	294	277	-5.8%
Sub-Total	374	1442	285	1011	232	620	16	26	4243	4006	-5.6%
Assault - MC	0	0	0	0	0	0	0	0	2	0	-100.0%
Theft - MC	0	3	0	2	0	0	0	0	1	5	400.0%
Drugs - MC	0	0	0	0	0	1	0	0	2	1	-50.0%
Other - MC	0	0	0	0	0	0	0	0	7	0	-100.0%
Disorderly Conduct	0	2	0	0	0	0	0	0	1	2	100.0%
City Ordinance Violations	0	0	0	0	0	0	0	0	0	0	0.0%
Violations of Probation	49	266	30	183	16	57	0	1	745	602	-19.2%
Sub-Total	49	271	30	185	16	58	0	1	758	610	-19.5%
Runaways - CHINS	19	30	26	25	24	35	2	0	134	161	20.1%
Other CHINS	0	1	0	0	0	0	0	0	75	1	-98.7%
TJJD Runaways	0	1	0	2	0	0	0	0	13	3	-76.9%
Administrative Actions *	190	878	158	575	66	238	4	10	2146	2119	-1.3%
Sub-Total	209	910	184	602	90	273	6	10	2368	2284	-3.5%
GRAND TOTAL	632	2623	499	1798	338	951	22	37	7369	6900	-6.4%

*Administrative Actions may include: motion to modify order, hold as material witness, request for change of custody, issuance of pick-up order, or motion for release and transfer. *Of the 7 homicide offense referrals for 2016, there were 7 actual deaths.



JUVENILE PROBATION DEPARTMENT

Tom Brooks, Executive Director



Executive Monthly Activity Report – July, 2016

Page 9 of 13 pages

Top 10 Felony and Misdemeanor Offenses

Top 10 Felony Offenses Jan-Jul 2016	Black		Hispanic		White		Other		Jan-Jul	Jan-Jul	Jan-Jul
	Female	Male	Female	Male	Female	Male	Female	Male	2015	2016	% Change
Burglary of a Habitat (Felony 1)	3	40	2	29	1	27	0	0	103	102	-1.0%
Aggravated Robbery (Felony 1)	4	89	3	44	0	9	0	2	176	151	-14.2%
Burglary of a Building (Jail Felony)	1	19	2	29	3	13	0	0	72	67	-6.9%
Possession/Personal Use - Group 1, Less than 1 Gram (Jail Felony)	0	5	1	8	1	6	0	0	44	21	-52.3%
Unauthorized Use of a Motor Vehicle (Jail Felony)	1	80	3	35	3	16	1	1	137	140	2.2%
Robbery (Felony 2)	3	39	0	15	1	1	0	0	92	59	-35.9%
Aggravated Assault Uses Deadly Weapon (Felony 2)	3	17	0	10	1	6	0	1	32	38	18.8%
Assault, Bodily Injury Against Public Servant (Felony 3)	18	29	5	10	5	6	0	0	65	73	12.3%
Aggravated Sexual Assault - Children Under 14 Years of Age (Felony 1)	0	31	0	12	4	9	0	1	13	57	338.5%
Theft From Person of Another (Jail Felony)	7	23	0	2	0	0	0	0	33	32	-3.0%
TOTAL	40	372	16	194	19	93	1	5	767	740	-3.5%

Top 10 Misdemeanor Offenses Jan-Jul 2016	Black		Hispanic		White		Other		Jan-Jul	Jan-Jul	Jan-Jul
	Female	Male	Female	Male	Female	Male	Female	Male	2015	2016	% Change
Theft - \$50 - \$499.99 Value (Misd B)	19	30	11	11	14	11	2	2	517	100	-80.7%
Assault with Bodily Injury (Misd A)	88	144	43	57	22	39	2	0	323	395	22.3%
Possession of Marijuana for Personal Use - Less than 2 oz (Misd B)	19	125	34	197	32	119	3	3	585	532	-9.1%
Evading Arrest Detention (Misd A)	12	112	9	74	7	51	0	2	294	267	-9.2%
Theft - \$500 - \$1,500 Value (Misd A)	6	11	7	9	1	2	0	0	87	36	-58.6%
Criminal Trespass - General (Misd B)	16	102	11	46	7	34	1	2	260	219	-15.8%
Assault-Family Member (Misd A)	23	43	25	32	24	16	1	2	176	166	-5.7%
Mischief - \$50-\$499.99 Property Damage (Misd B)	4	24	8	11	3	8	0	0	107	58	-45.8%
Burglary of Motor Vehicle (Misd A)	0	34	3	18	3	21	0	0	77	79	2.6%
Terroristic Threat - General (Misd B)	3	29	1	4	3	6	0	1	52	47	-9.6%
TOTAL	190	654	152	459	116	307	9	12	2478	1899	-23.4%



JUVENILE PROBATION DEPARTMENT

Tom Brooks, Executive Director



Executive Monthly Activity Report – July, 2016

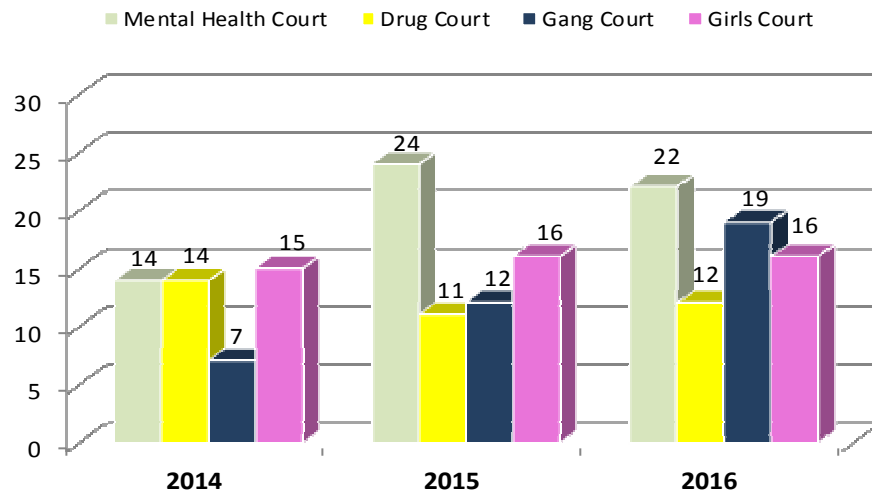
Page 10 of 13 pages

Field Services Activity*

Type of Probation Service	July					
	2014		2015		2016	
	Caseload	JPO Avg	Caseload	JPO Avg	Caseload	JPO Avg
Community Supervision	1599	25	1485	26	1752	33
Adjudication	841		740		970	
Deferred Adjudication	758		745		782	
Specialized Supervision	985		903		741	
CUPS 9	188		181		169	
Mental Health	120	17	113	13	124	15
Sex Offender	68	14	68	15	45	16
CUPS 7	231		241		203	
Aftercare	231	17	241	21	203	13
CUPS 6	404		291		280	
Female Intervention	43	13	34	10	29	10
Intensive	361	16	257	13	251	15
YESS Program	162	14	190	18	89	12
Deferred Prosecution	486		481		397	
90-Day	231	10	262	12	198	8
180 Day	255	30	219	24	199	21
Total	3070		2869		2890	

*Youth caseload is based on a daily caseload average for the month shown. JPO caseload average is calculated using the last JPO of record for the casefiles for the month shown. Effective November 1, 2015, the name of the Gang Unit was changed to the Youth Empowerment Services and Supervision (YESS) Program.

Specialized Court Activity – July**



**Specialized Court Activity represents average youth count for the month shown.



JUVENILE PROBATION DEPARTMENT

Tom Brooks, Executive Director



Executive Monthly Activity Report – July, 2016

Page 11 of 13 pages

*Youth Admitted to Facilities**

Facilities	Year Ending		Jan-Jul 2016
	2014	2015	
Burnett-Bayland Reception Center	552	482	215
Residential Assessment (BRU)	125	92	0
Drug Unit (BDU)	149	125	55
Brief Structural Intervention (BIU)	166	188	113
Psychological Unit (BMU)	47	0	0
Phoenix Unit (BPU)	44	77	47
Transition Unit (BTU)	21	0	0
Leadership Academy (HLA)	219	274	142
Youth Village (HYV)	251	245	143
County Post-Adjudication Subtotal	1022	1001	500
Private Placement	165	140	35
Boys Town (BOY)	1	3	0
TMG/Hays County Juv Ctr (CCI)	43	47	5
Clarinda Academy (CLR)	0	7	0
Center for Success (CSI)	11	11	3
Everyday Life (EDL)	5	0	0
Gulf Coast Trade Ctr (GCT)	8	0	0
Glen Mills Schools (GMS)	2	16	12
Hector Garza Ctr (HGC)	29	0	0
Lakeside Academy (LSA)	0	1	1
Mingus Mountain Estate (MME)	0	9	2
Mountain Home Academy (MTN)	0	2	0
Pegasus Schools, Inc. (PGS)	6	6	4
Rockdale Justice Ctr (RJC)	19	14	3
Renewed Strength Treatment Ctr (RSR)	3	0	0
Victoria County JJC (VIC)	19	12	1
We Care Treatment Ctr (WCT)	16	7	2
Woodward Academy (WWA)	0	5	2
All Post-Adjudication Subtotal	1187	1141	535
Detention Center* (DET)	2888	2646	1787
Detention Residential Assessment (DRU)	752	782	550
Detention Girls Intervention (GIP)	0	0	29
Burnett-Bayland Detention (BDP)	0	78	111
Harris County Psychiatric (HCP)	109	143	78
TOTAL	4936	4790	3090

*Youth admitted is a count of individual youth, not the number of admits each may have had at that particular facility. If a youth was admitted at two different facilities he was counted once at each facility. The quantity of bed space increased at HCP from 16 to 21 as of March 2015. BBRC Pre-Adjudicated Detention was opened in June 2015. The post-adjudicated Detention Girls Intervention Unit launched April 2016.





JUVENILE PROBATION DEPARTMENT

Tom Brooks, Executive Director

Executive Monthly Activity Report – July, 2016

Page 12 of 13 pages

Average Daily Population - July*

County Facilities (available beds)	2014				2015				2016			
	Black	Hispanic	White	Total	Black	Hispanic	White	Total	Black	Hispanic	White	Total
Burnett Bayland Reception Center (144)	38	35	10	84	66	36	12	112	54	41	11	104
Residential Assessment (12)	3	2	1	5	0	0	0	0	0	0	0	0
Drug Unit (24)	12	23	6	41	18	22	7	47	7	20	3	30
Brief Structural Intervention (24)	15	8	1	24	12	6	4	21	10	8	2	19
Psychological Unit (12)	8	2	2	14	0	0	0	0	0	0	0	0
Phoenix Unit (12)	0	0	0	0	19	4	1	24	17	4	4	24
Detention Unit (36)	0	0	0	0	17	4	0	20	20	9	2	31
Harris County Psychiatric Center (21)	8	4	3	15	14	2	6	21	11	4	6	22
Leadership Academy (96)	41	25	8	74	45	34	12	91	52	29	10	92
Harris County Youth Village (128)	38	31	15	84	34	47	14	95	44	36	14	94
Detention Center (250)	133	66	18	217	137	65	19	221	130	68	21	220
Detention Assessment Unit	16	10	5	32	19	18	4	43	21	13	9	44
Detention Girls Intervention	0	0	0	0	0	0	0	0	1	1	1	2
Private Placement												
Texsun Management Group	10	2	2	13	10	4	3	18	2	2	0	2
Center for Success & Independence	1	2	1	4	1	5	0	6	1	0	0	3
Embracing Destiny Foundation	2	0	0	2	0	0	0	0	0	0	0	0
Gulf Coast Trade Center	1	1	1	2	0	0	0	0	0	0	0	0
Hector Garza Center	7	5	5	17	0	0	0	0	0	0	0	0
Rockdale Justice Center	4	2	1	8	5	0	1	5	1	0	0	1
Renewed Strength Residential	1	0	1	1	0	0	0	0	0	0	0	0
Victoria County JJC	3	3	0	6	6	1	0	7	0	0	0	0
We Care Treatment Center	2	0	0	2	1	0	0	1	0	0	0	0
Boys Town	0	0	0	0	1	0	0	1	0	0	1	1
Lakeside Academy (Sequel Youth)	0	0	0	0	0	0	0	0	0	0	1	1
Mingus Mountain Estate	0	0	0	0	5	0	0	5	0	1	0	1
Pegasus Schools, Inc.	1	0	0	1	3	2	3	8	0	4	0	4
Clarinda Academy (Sequel Youth Service)	0	0	0	0	3	2	2	7	0	0	0	0
Glen Mills Schools	0	0	0	0	3	4	2	9	11	2	0	13
Woodward Academy	0	0	0	0	0	0	2	2	1	1	1	3
Mountain Home Academy	0	0	0	0	0	0	1	1	1	0	0	1

*Only placements with youth enrolled during the month are shown. Totals are not exact due to other races that are not shown and due to rounding effects because average numbers are used. The quantity of bed space increased at HCP from 16 to 21 as of March 2015. BBRC Pre-Adjudicated Detention was opened in June 2015. The post-adjudicated Detention Girls Intervention Unit launched April 2016.



JUVENILE PROBATION DEPARTMENT

Tom Brooks, Executive Director



Executive Monthly Activity Report – July, 2016

Page 13 of 13 pages

Murder Activity*

	2006	2007	2009	2010	2011	2012	2013	2014	2015	Jan-Jul 2016
Age										
10										
11										
12			2							
13	1						1			
14		1	4		1			1		
15	6	7		3	2	2	2	1	2	1
16+	9	6	10	15	7	6	6	6	5	6
TOTAL	16	14	16	18	10	8	9	8	7	7
Race/Sex										
Black Female		1	2	1	2					
Black Male	3	6	8	11		1	8	4	6	3
Hispanic Female		1				1				1
Hispanic Male	8	1	5	6	7	4	1	4	1	2
Asian Female										
Asian Male										
White Female	2					1				
White Male	3	5	1		1	1				1
Other Female										
Other Male										
TOTAL	16	14	16	18	10	8	9	8	7	7
School District										
Aldine	4	1	1		1	2		1		
Alief			1			2		1		1
Brazos School					2					
Channelview										
Cypress-Fairbanks	2			1		2		1		
Deer Park										
Galena Park			4	2			1			1
Goose Creek		1						1		
Houston	3	2	4	2	2		2	2	4	
Houston Can Academy					1		1			
Humble										1
Katy	1	1	1							1
Klein		1								
Lamar										1
North Forest			1	5			1			
Pasadena				1						1
Clear Creek								1		
Spring			3	3			1		1	
Spring Branch									1	
GED										1
College/University		1	1							
Private/Parochial	2	4		3			2		1	
Juvenile Board Charter School										
Out of County	1	1		1	2	1		1		
Not Available	3	2			2	1	1			
TOTAL	16	14	16	18	10	8	9	8	7	7

*Of the 2016 homicide charges, there were seven (7) actual deaths. Please note referrals are not unique to individuals.



"...exciting possibilities afforded only by living lives within the law." 2008 Annual Report