

# JUVENILE PROBATION DEPARTMENT

Tom Brooks, Executive Director



## Executive Monthly Activity Report – May, 2016

### 2016 Referral

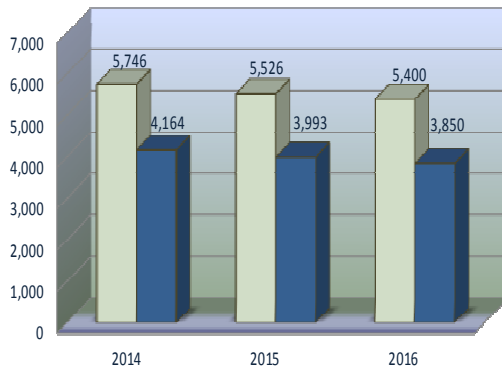
Charges Received	
January	932
February	1,210
March	1,060
April	1,086
May	1,112
June	
July	
August	
September	
October	
November	
December	
<b>TOTAL</b>	<b>5,400</b>
<b>AVERAGE</b>	<b>1,080</b>
<b>YOUTH</b>	<b>3,850</b>

### Harris County Census Data Comparisons\*

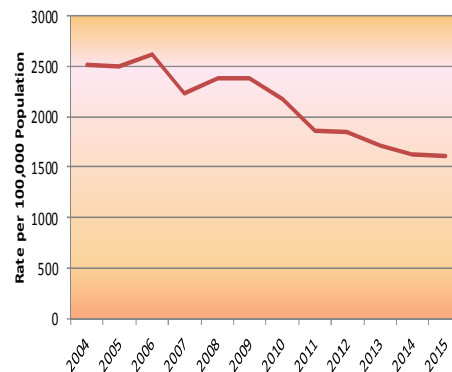
	Census Data*	Delinquent Conduct		Felony		Murder	
		Referrals	Rate/100,000	Referrals	Rate/100,000	Referrals	Rate/100,000
2004	444,722	11,184	2,515	3,703	833	14	3
2005	448,861	11,187	2,492	3,725	830	13	3
2006	451,874	11,790	2,609	3,850	852	16	4
2007	454,279	10,974	2,416	3,594	791	14	3
2008	453,639	10,333	2,278	3,107	685	27	6
2009	452,494	10,795	2,386	2,899	641	16	4
2010	453,180	9,845	2,172	2,398	529	18	4
2011	458,330	8,554	1,866	2,231	487	10	2
2012	432,521	7,988	1,847	2,038	471	8	2
2013	436,452	7,496	1,717	2,019	463	9	2
2014	440,692	7,188	1,631	2,024	459	8	2
2015	444,725	7,153	1,608	2,123	477	7	2

\*Census Project Data for youth aged 10-17

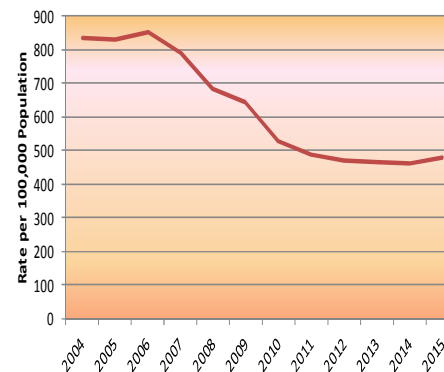
Charges Received as Compared to Youth Involved January-May 2014-2016



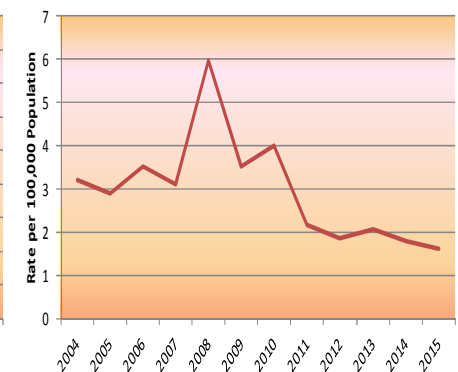
Delinquent Conduct Referrals



Felony Referrals



Murder Referrals



# JUVENILE PROBATION DEPARTMENT

Tom Brooks, Executive Director

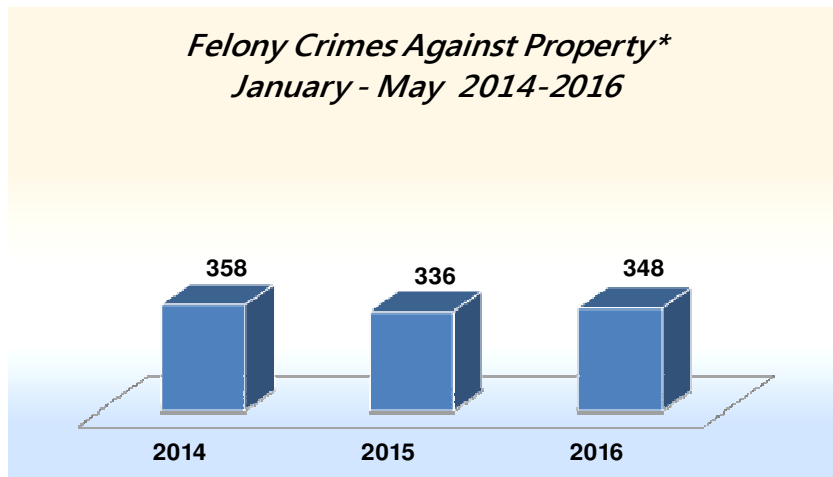


## Executive Monthly Activity Report – May, 2016

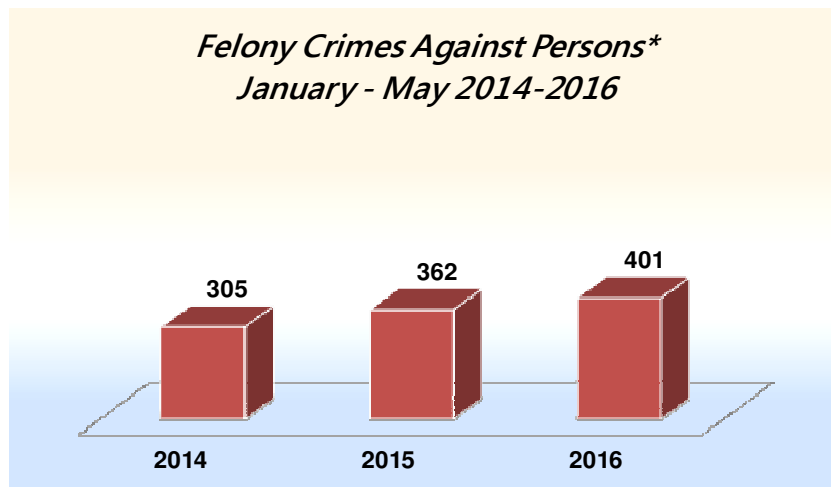
Page 2 of 13 pages

### Type of Charge Based on Crime Category

	Jan	Feb	Mar	Apr	May	Jun	Jul	Aug	Sep	Oct	Nov	Dec	TOTAL	% TOTAL
Person (Felony)	75	102	78	83	63								401	7.4%
Person (Misdemeanor)	80	102	94	109	98								483	8.9%
Property (Felony)*	77	69	62	68	72								348	6.4%
Property (Misdemeanor)	145	139	129	191	144								748	13.9%
Illegal Substance	91	173	113	125	117								619	11.5%
All Others	118	130	121	143	122								634	11.7%
CHINS	15	29	25	35	30								134	2.5%
Violations of Probation	80	112	91	84	96								463	8.6%
Administrative Offenses	251	354	347	248	370								1570	29.1%
<b>TOTAL</b>	<b>932</b>	<b>1210</b>	<b>1060</b>	<b>1086</b>	<b>1112</b>	<b>0</b>	<b>0</b>	<b>0</b>	<b>0</b>	<b>0</b>	<b>0</b>	<b>0</b>	<b>5400</b>	<b>100.0%</b>



\*Arson, Burglary, Theft, AutoTheft, Unauthorized Use of a Motor Vehicle, and Criminal Mischief.



\*Murder, Robbery, Assault, and Sexual Assault.



“...reassure our young people that they can overcome certain obstacles and go on to become productive members of society.” 2010 Annual

# JUVENILE PROBATION DEPARTMENT

Tom Brooks, Executive Director



## Executive Monthly Activity Report – May, 2016

Page 3 of 13 pages

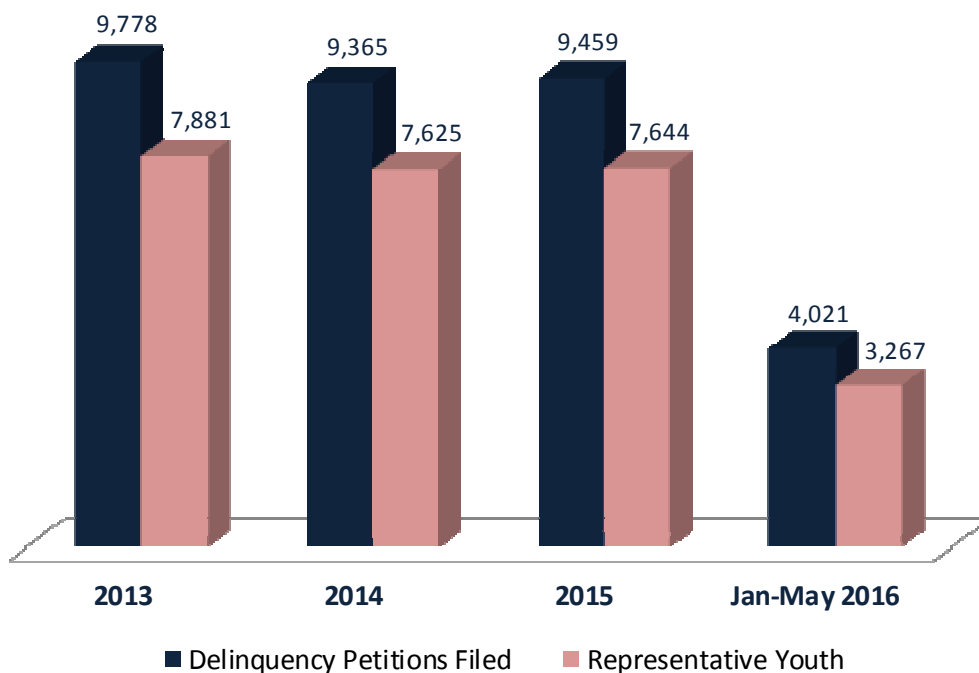
### *Cases Assigned and Disposed January - May 2016*

	313th		314th		315th		TOTALS	
	Assigned	Disposed	Assigned	Disposed	Assigned	Disposed	ASSIGNED	DISPOSED
<b>Petitions*</b>	1387	1462	1318	1416	1316	1389	4021	4267
<b>Youth Involved</b>	1133	1108	1073	1086	1061	977	3267	3171

\*Cases that are off the docket, withdrawn, under advisement, passed, or included with another referral have been deleted from these counts.

### *Petitions Filed and Representative Youth*

	Delinquency Petitions Filed	Representative Youth
Jan-May 2016	4,021	3,267
2015	9,459	7,644
2014	9,365	7,625
2013	9,778	7,881



# JUVENILE PROBATION DEPARTMENT

Tom Brooks, Executive Director



## Executive Monthly Activity Report – May, 2016

Page 4 of 13 pages

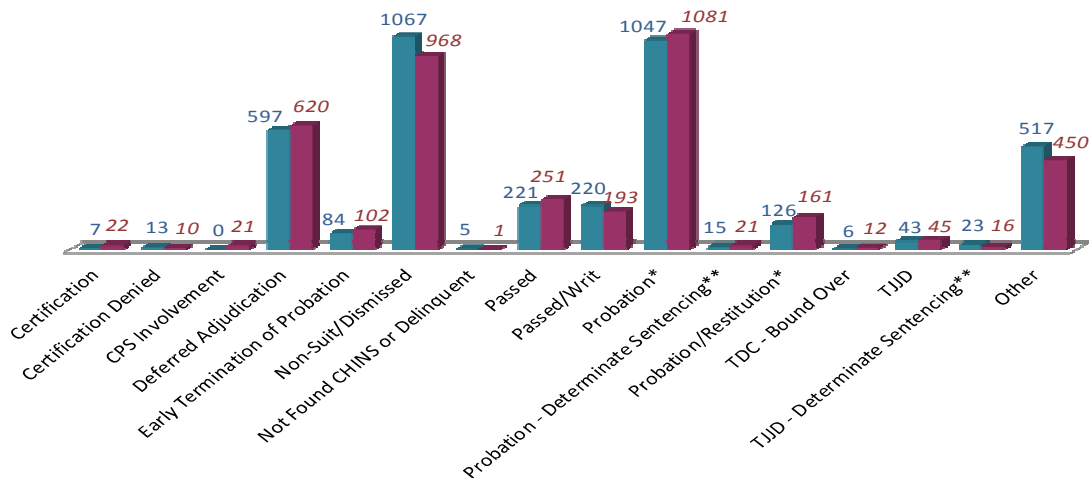
### Court Activity\* January - May 2016

COURT DECISIONS	Black		Hispanic		White		Other		DECISION	
	Female	Male	Female	Male	Female	Male	Female	Male	YOUTH	TOTAL
Certification	0	18	0	3	0	1	0	0	22	35
Certification Denied	1	5	0	3	0	1	0	0	10	16
CPS Involvement	3	8	2	1	1	6	0	0	21	31
Deferred Adjudication	89	180	64	121	51	111	1	3	620	669
Early Termination of Probation	12	36	8	26	4	16	0	0	102	145
Non-Suit/Dismissed	116	315	74	225	56	176	2	4	968	1087
Not Found CHINS or Delinquent	0	1	0	0	0	0	0	0	1	1
Passed	45	89	20	47	18	31	0	1	251	433
Passed/Writ	25	69	11	50	9	26	1	2	193	287
Probation*	112	413	88	311	30	123	0	4	1081	1680
Probation - Determinate Sentencing**	1	9	0	9	0	1	0	1	21	24
Probation/Restitution*	7	72	4	51	2	25	0	0	161	187
TDC - Bound Over	0	8	0	3	1	0	0	0	12	13
TJJD	3	26	1	8	0	7	0	0	45	69
TJJD - Determinate Sentencing**	0	8	0	7	0	1	0	0	16	21
Other	52	158	41	112	20	65	0	2	450	607
<b>TOTAL</b>	<b>466</b>	<b>1415</b>	<b>313</b>	<b>977</b>	<b>192</b>	<b>590</b>	<b>4</b>	<b>17</b>	<b>3974</b>	<b>5305</b>

\*Includes Changes of Custody. Youth may be counted multiple times if received multiple decisions within the noted time period.

\*\*Approximate numbers – using declared determinate sentencing (DDS) as court result.

### Youth Comparison January - May 2015 / 2016



"...detering future delinquency and setting youth on the path to successful, wholesome futures." 2009 Annual Report

# JUVENILE PROBATION DEPARTMENT

Tom Brooks, Executive Director



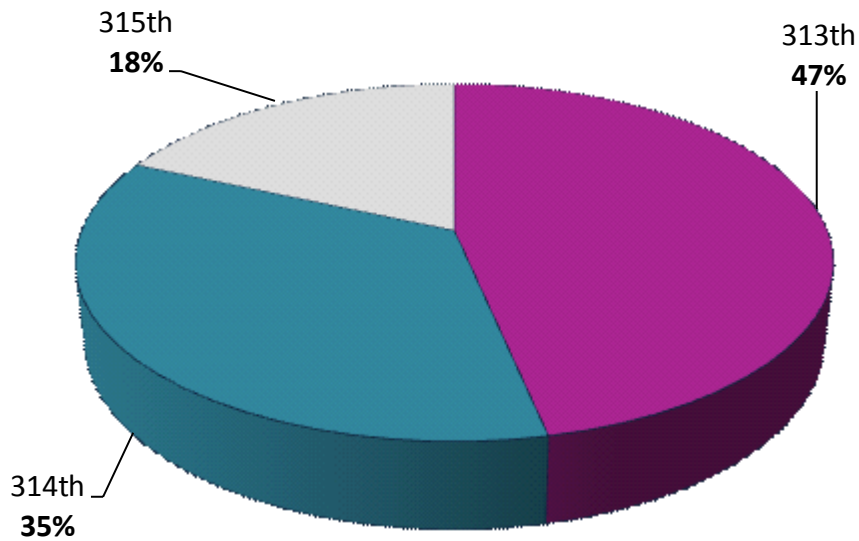
## Executive Monthly Activity Report – May, 2016

Page 5 of 13 pages

### TJJD Dispositions by Court

Disposition Year	Disposition	313th		314th		315th		TOTAL	TOTAL
		Youth	Dispositions	Youth	Dispositions	Youth	Dispositions	Youth	Dispositions
Jan-May 2016	TJJD	28	46	21	25	11	19	60	90
2015	TJJD	70	107	74	100	36	54	180	261
2014	TJJD	38	59	38	61	26	41	102	161
2013	TJJD	55	75	46	72	22	39	123	186

### TJJD Commitments By Court (Youth) January - May 2016

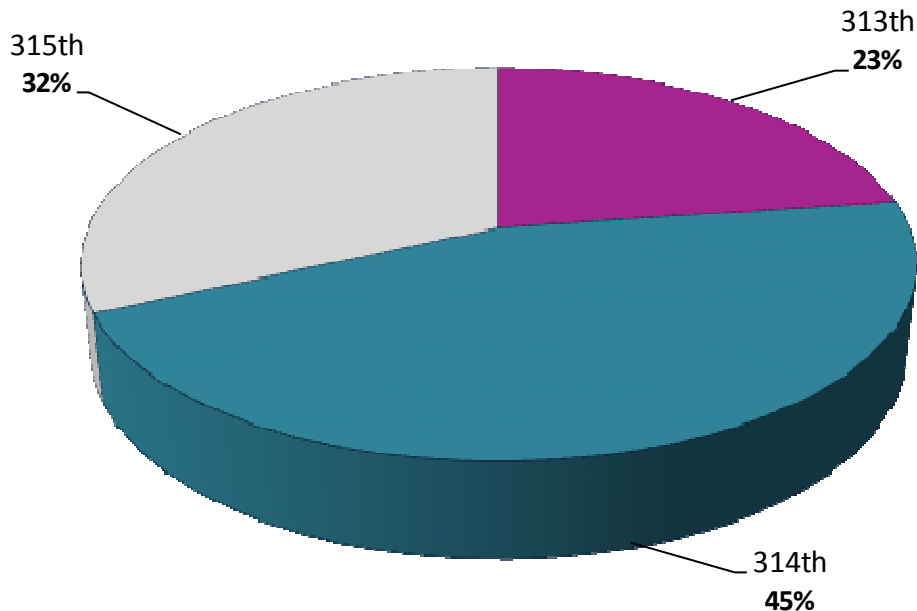




*Certifications*

Disposition Year	Court			Youth Total	Petition Total
	313	314	315		
2016	5	10	7	22	35
2015	11	10	7	28	46
2014	11	20	3	34	63
2013	17	11	9	37	44
2012	16	15	1	32	47
2011	16	19	3	38	53
2010	27	14	19	60	87
2009	22	18	20	60	84
2008	34	31	23	88	135
2007	40	26	16	82	114
2006	42	26	22	90	120
2005	28	10	18	56	93

*Certifications by Court (Youth)  
January - May 2016*



# JUVENILE PROBATION DEPARTMENT

Tom Brooks, Executive Director



## Executive Monthly Activity Report – May, 2016

Page 7 of 13 pages

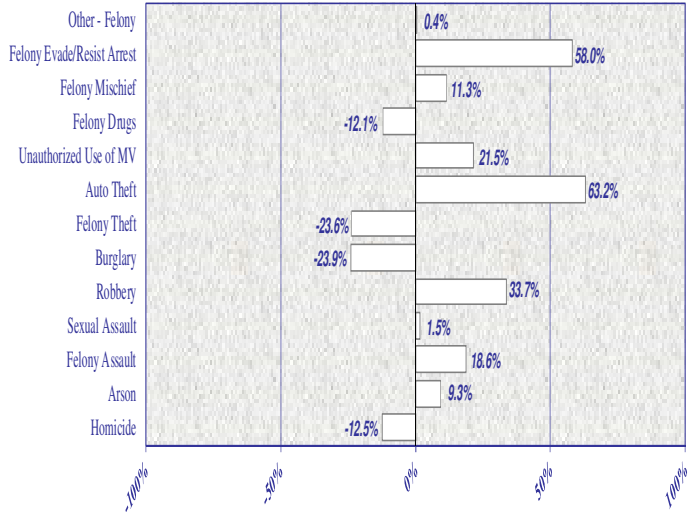
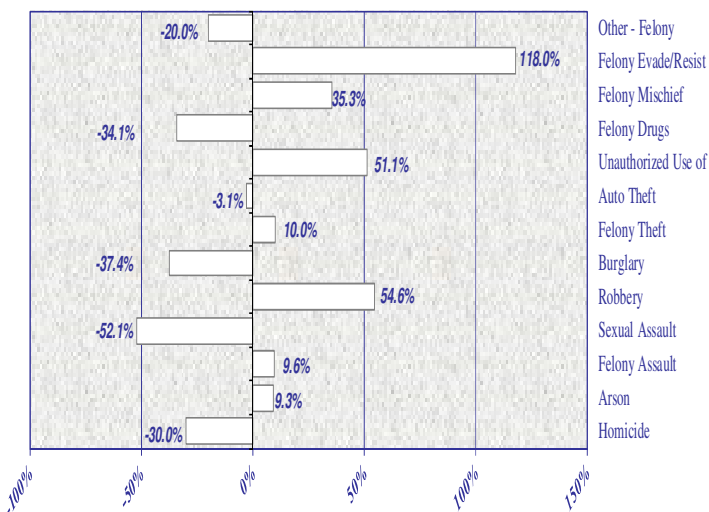
### Most Serious Charge Activity\*

	Jan-May											
	2005	2006	2007	2008	2009	2010	2011	2012	2013	2014	2015	2016
Homicide	13	16	14	27	16	18	10	8	9	8	7	3
Arson	57	57	29	53	56	52	43	47	31	43	47	11
Felony Assault	419	402	351	328	336	351	303	295	304	279	331	159
Sexual Assault	249	231	171	149	148	142	142	128	113	67	68	68
Robbery	330	357	374	351	345	324	282	263	357	326	436	171
Burglary	696	703	703	685	788	552	542	514	450	447	340	134
Felony Theft	69	110	106	84	110	84	99	110	117	144	110	62
Auto Theft	52	47	39	33	22	22	32	32	20	19	31	13
Unauthorized Use of MV	276	251	222	183	153	122	130	101	106	163	198	104
Felony Drugs	665	744	740	407	349	309	232	183	159	174	153	67
Mischief/Felony	68	48	84	59	82	53	51	62	57	62	69	24
Evade/Resist Arrest Felony	99	122	85	81	80	55	50	53	60	69	109	57
Other - Felony	427	495	409	472	399	313	313	242	236	223	224	104
<b>Serious Offense Totals</b>	<b>3420</b>	<b>3583</b>	<b>3327</b>	<b>2912</b>	<b>2884</b>	<b>2397</b>	<b>2229</b>	<b>2038</b>	<b>2019</b>	<b>2024</b>	<b>2123</b>	<b>977</b>
<b>Total Referrals</b>	<b>23,480</b>	<b>24,877</b>	<b>23,164</b>	<b>20,885</b>	<b>19,828</b>	<b>17,978</b>	<b>15,873</b>	<b>14,402</b>	<b>13,793</b>	<b>12,492</b>	<b>12,249</b>	<b>5,400</b>
<b>Serious Offense Percent</b>	<b>15%</b>	<b>14%</b>	<b>14%</b>	<b>14%</b>	<b>15%</b>	<b>13%</b>	<b>14%</b>	<b>14%</b>	<b>15%</b>	<b>16%</b>	<b>17%</b>	<b>18%</b>

\*This chart contains selected offense categories which are summed and shown as a percentage of ALL ACTIVITY TOTALS

### Five Year Offense Comparison Percentage Change, 2011-2015

### Most Current Completed Year Comparison Percentage Change, 2014-2015



"...holding youth accountable while offering support, guidance and direction to help them succeed." 2009 Annual Report



# JUVENILE PROBATION DEPARTMENT

Tom Brooks, Executive Director

## Executive Monthly Activity Report – May, 2016

Page 8 of 13 pages

The following table presents a comparison of **January-May 2015** referral activity as contrasted to **January-May 2016** referral activity. During this month, the data shows an overall 2.3% decrease in referral activity. Despite this decrease, increases are found for Sexual Assault (277.8%), Felony Assault (21.4%), Misdemeanor A/B Assault (20.8%), and Unauthorized Use of Motor Vehicle (19.5%). Several decreases include Arson (-47.6%), Homicide (-40.0%), Auto Theft (-27.8%), and Felony Drugs (-22.1%). Less serious offenses decreased by 16.9%.

**There were 3 referrals\* for homicide during January-May 2016, compared to 5 for the same time period of 2015.**

### Offense Charge per Referral\*

Offense	Black		Hispanic		White		Other		Jan-May	Jan-May	Jan-May
	Female	Male	Female	Male	Female	Male	Female	Male	2015	2016	% Change
Homicide*	0	0	1	2	0	0	0	0	5	3	-40.0%
Arson	1	1	3	1	1	4	0	0	21	11	-47.6%
Assault - Felony	24	64	8	30	9	23	0	1	131	159	21.4%
- MA/MB	104	154	57	73	41	52	2	0	400	483	20.8%
Sexual Assault	2	34	0	16	3	13	0	0	18	68	277.8%
Robbery	5	107	3	48	0	6	0	2	208	171	-17.8%
Burglary	2	44	2	49	1	36	0	0	128	134	4.7%
Theft - Felony	9	35	2	8	0	8	0	0	57	62	8.8%
- MA/MB	48	119	55	60	58	61	6	6	516	413	-20.0%
Auto Theft	0	4	0	6	1	2	0	0	18	13	-27.8%
Unauthorized Use of a Motor Vehicle	1	61	3	24	2	12	0	1	87	104	19.5%
Drugs - Felony	3	15	3	25	4	16	1	0	86	67	-22.1%
- MA/MB	23	125	37	203	39	117	3	3	618	550	-11.0%
Mischief/Felony	3	8	1	4	1	7	0	0	25	24	-4.0%
- MA/MB	16	42	8	33	5	21	0	1	109	126	15.6%
Evade/Resisting Arrest Felony	1	30	1	16	1	7	0	1	53	57	7.5%
- MA/MB	14	98	12	76	5	45	0	3	294	253	-13.9%
DWI - MA/MB	0	0	0	1	0	1	0	0	1	2	100.0%
Trespass - MA/MB	18	102	14	42	7	22	1	0	221	206	-6.8%
Other - Felony	8	36	3	29	1	26	0	1	105	104	-1.0%
- MA/MB	24	76	13	56	11	36	0	1	226	217	-4.0%
<b>Sub-Total</b>	<b>306</b>	<b>1155</b>	<b>226</b>	<b>802</b>	<b>190</b>	<b>515</b>	<b>13</b>	<b>20</b>	<b>3327</b>	<b>3227</b>	<b>-3.0%</b>
Assault - MC	0	0	0	0	0	0	0	0	2	0	-100.0%
Theft - MC	0	3	0	0	0	0	0	0	1	3	200.0%
Drugs - MC	0	0	0	0	0	0	0	0	2	0	-100.0%
Other - MC	0	0	0	0	0	0	0	0	2	0	-100.0%
Disorderly Conduct	0	1	0	0	0	0	0	0	1	1	0.0%
City Ordinance Violations	0	0	0	0	0	0	0	0	0	0	0.0%
Violations of Probation	39	211	19	137	10	46	0	1	554	463	-16.4%
<b>Sub-Total</b>	<b>39</b>	<b>215</b>	<b>19</b>	<b>137</b>	<b>10</b>	<b>46</b>	<b>0</b>	<b>1</b>	<b>562</b>	<b>467</b>	<b>-16.9%</b>
Runaways - CHINS	12	27	21	19	20	32	2	0	107	133	24.3%
Other CHINS	0	1	0	0	0	0	0	0	68	1	-98.5%
TJJD Runaways	0	0	0	2	0	0	0	0	8	2	-75.0%
Administrative Actions *	151	652	129	411	46	174	2	5	1454	1570	8.0%
<b>Sub-Total</b>	<b>163</b>	<b>680</b>	<b>150</b>	<b>432</b>	<b>66</b>	<b>206</b>	<b>4</b>	<b>5</b>	<b>1637</b>	<b>1706</b>	<b>4.2%</b>
<b>GRAND TOTAL</b>	<b>508</b>	<b>2050</b>	<b>395</b>	<b>1371</b>	<b>266</b>	<b>767</b>	<b>17</b>	<b>26</b>	<b>5526</b>	<b>5400</b>	<b>-2.3%</b>

\*Administrative Actions may include: motion to modify order, hold as material witness, request for change of custody, issuance of pick-up order, or motion for release and transfer. \*Of the 3 homicide offense referrals for 2016, there were 3 actual deaths.





# JUVENILE PROBATION DEPARTMENT

Tom Brooks, Executive Director



## Executive Monthly Activity Report – May, 2016

Page 9 of 13 pages

### Top 10 Felony and Misdemeanor Offenses

Top 10 Felony Offenses Jan-May 2016	Black		Hispanic		White		Other		Jan-May	Jan-May	Jan-May
	Female	Male	Female	Male	Female	Male	Female	Male	2015	2016	% Change
Burglary of a Habitat (Felony 1)	2	30	2	22	1	22	0	0	78	79	1.3%
Aggravated Robbery (Felony 1)	2	76	3	34	0	5	0	2	133	122	-8.3%
Burglary of a Building (Jail Felony)	0	13	0	24	0	9	0	0	48	46	-4.2%
Possession/Personal Use - Group 1, Less than 1 Gram (Jail Felony)	0	5	1	6	1	7	0	0	33	20	-39.4%
Unauthorized Use of a Motor Vehicle (Jail Felony)	1	61	3	24	2	12	0	1	87	104	19.5%
Robbery (Felony 2)	3	31	0	14	0	1	0	0	74	49	-33.8%
Aggravated Assault Uses Deadly Weapon (Felony 2)	2	10	0	7	1	6	0	1	22	27	22.7%
Assault, Bodily Injury Against Public Servant (Felony 3)	16	29	5	8	5	6	0	0	60	69	15.0%
Aggravated Sexual Assault - Children Under 14 Years of Age (Felony 1)	0	27	0	9	3	10	0	0	10	49	390.0%
Theft From Person of Another (Jail Felony)	7	20	0	2	0	0	0	0	28	29	3.6%
<b>TOTAL</b>	<b>33</b>	<b>302</b>	<b>14</b>	<b>150</b>	<b>13</b>	<b>78</b>	<b>0</b>	<b>4</b>	<b>573</b>	<b>594</b>	<b>3.7%</b>

Top 10 Misdemeanor Offenses Jan-May 2016	Black		Hispanic		White		Other		Jan-May	Jan-May	Jan-May
	Female	Male	Female	Male	Female	Male	Female	Male	2015	2016	% Change
Theft - \$50 - \$499.99 Value (Misd B)	19	26	9	7	14	10	2	2	377	89	-76.4%
Assault with Bodily Injury (Misd A)	81	123	35	49	23	38	1	0	271	350	29.2%
Possession of Marijuana for Personal Use - Less than 2 oz (Misd B)	19	115	33	173	28	101	3	3	513	475	-7.4%
Evading Arrest Detention (Misd A)	9	81	6	63	3	34	0	2	238	198	-16.8%
Theft - \$500 - \$1,500 Value (Misd A)	6	11	7	9	1	2	0	0	75	36	-52.0%
Criminal Trespass - General (Misd B)	12	76	9	32	6	19	1	0	186	155	-16.7%
Assault-Family Member (Misd A)	22	30	22	22	18	12	1	0	126	127	0.8%
Mischief - \$50-\$499.99 Property Damage (Misd B)	4	20	7	11	3	6	0	0	80	51	-36.3%
Burglary of Motor Vehicle (Misd A)	0	27	1	11	2	19	0	0	60	60	0.0%
Terroristic Threat - General (Misd B)	2	26	1	4	3	4	0	1	42	41	-2.4%
<b>TOTAL</b>	<b>174</b>	<b>535</b>	<b>130</b>	<b>381</b>	<b>101</b>	<b>245</b>	<b>8</b>	<b>8</b>	<b>1968</b>	<b>1582</b>	<b>-19.6%</b>



# JUVENILE PROBATION DEPARTMENT

Tom Brooks, Executive Director



## Executive Monthly Activity Report – May, 2016

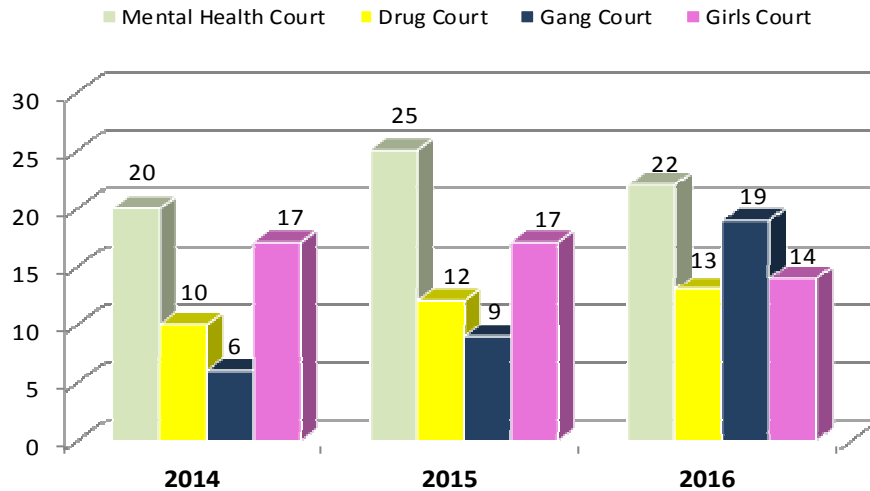
Page 10 of 13 pages

### Field Services Activity\*

Type of Probation Service	May					
	2014		2015		2016	
	Caseload	JPO Avg	Caseload	JPO Avg	Caseload	JPO Avg
Community Supervision	<b>1524</b>	24	<b>1392</b>	24	<b>1664</b>	33
Adjudication	835		744		970	
Deferred Adjudication	689		648		694	
Specialized Supervision	<b>959</b>		<b>920</b>		<b>757</b>	
CUPS 9	195		191		170	
Mental Health	123	20	122	21	118	18
Sex Offender	72	20	69	15	52	10
CUPS 7	219		219		223	
Aftercare	219	16	219	14	223	15
CUPS 6	389		316		277	
Female Intervention	43	13	36	10	31	12
Intensive	346	19	280	13	246	14
YESS Program	156	16	194	13	87	11
Deferred Prosecution	<b>558</b>		<b>472</b>		<b>403</b>	
90-Day	288	12	277	12	214	9
180 Day	270	29	195	25	189	22
<b>Total</b>	<b>3041</b>		<b>2784</b>		<b>2824</b>	

\*Youth caseload is based on a daily caseload average for the month shown. JPO caseload average is calculated using the last JPO of record for the casefiles for the month shown. Effective November 1, 2015, the name of the Gang Unit was changed to the Youth Empowerment Services and Supervision (YESS) Program.

### Specialized Court Activity – May\*\*



\*\*Specialized Court Activity represents average youth count for the month shown.



# JUVENILE PROBATION DEPARTMENT

Tom Brooks, Executive Director



## Executive Monthly Activity Report – May, 2016

Page 11 of 13 pages

### Youth Admitted to Facilities\*

Facilities	Year Ending		Jan-May 2016
	2014	2015	
<b>Burnett-Bayland Reception Center</b>	<b>552</b>	<b>482</b>	<b>149</b>
Residential Assessment (BRU)	125	92	0
Drug Unit (BDU)	149	125	42
Brief Structural Intervention (BIU)	166	188	78
Psychological Unit (BMU)	47	0	0
Phoenix Unit (BPU)	44	77	29
Transition Unit (BTU)	21	0	0
<b>Leadership Academy (HLA)</b>	<b>219</b>	<b>274</b>	<b>110</b>
<b>Youth Village (HYV)</b>	<b>251</b>	<b>245</b>	<b>100</b>
County Post-Adjudication Subtotal	1022	1001	359
<b>Private Placement</b>	<b>165</b>	<b>140</b>	<b>30</b>
Boys Town (BOY)	1	3	0
TMG/Hays County Juv Ctr (CCI)	43	47	5
Clarinda Academy (CLR)	0	7	0
Center for Success (CSI)	11	11	1
Everyday Life (EDL)	5	0	0
Gulf Coast Trade Ctr (GCT)	8	0	0
Glen Mills Schools (GMS)	2	16	12
Hector Garza Ctr (HGC)	29	0	0
Lakeside Academy (LSA)	0	1	1
Mingus Mountain Estate (MME)	0	9	1
Mountain Home Academy (MTN)	0	2	0
Pegasus Schools, Inc. (PGS)	6	6	4
Rockdale Justice Ctr (RJC)	19	14	1
Renewed Strength Treatment Ctr (RSR)	3	0	0
Victoria County JJC (VIC)	19	12	1
We Care Treatment Ctr (WCT)	16	7	2
Woodward Academy (WWA)	0	5	2
All Post-Adjudication Subtotal	1187	1141	389
<b>Detention Center* (DET)</b>	<b>2888</b>	<b>2646</b>	<b>1417</b>
Detention Residential Assessment (DRU)	752	782	388
Detention Girls Intervention (GIP)	0	0	22
<b>Burnett-Bayland Detention (BDP)</b>	<b>0</b>	<b>78</b>	<b>95</b>
<b>Harris County Psychiatric (HCP)</b>	<b>109</b>	<b>143</b>	<b>57</b>
<b>TOTAL</b>	<b>4936</b>	<b>4790</b>	<b>2368</b>

\*Youth admitted is a count of individual youth, not the number of admits each may have had at that particular facility. If a youth was admitted at two different facilities he was counted once at each facility. The quantity of bed space increased at HCP from 16 to 21 as of March 2015. BBRC Pre-Adjudicated Detention was opened in June 2015. The post-adjudicated Detention Girls Intervention Unit launched April 2016.





# JUVENILE PROBATION DEPARTMENT

Tom Brooks, Executive Director

## Executive Monthly Activity Report – May, 2016

Page 12 of 13 pages

### Average Daily Population - May\*

County Facilities (available beds)	2014				2015				2016			
	Black	Hispanic	White	Total	Black	Hispanic	White	Total	Black	Hispanic	White	Total
<b>Burnett Bayland Reception Center (144)</b>	<b>38</b>	<b>30</b>	<b>8</b>	<b>72</b>	<b>45</b>	<b>41</b>	<b>11</b>	<b>98</b>	<b>61</b>	<b>42</b>	<b>12</b>	<b>115</b>
Residential Assessment (12)	3	3	1	5	2	2	1	5	0	0	0	0
Drug Unit (24)	20	22	4	45	15	30	2	47	11	21	5	37
Brief Structural Intervention (24)	6	3	2	11	12	4	6	22	5	9	3	17
Psychological Unit (12)	7	1	1	9	0	0	0	0	0	0	0	0
Phoenix Unit (12)	0	0	0	0	16	5	2	24	18	4	2	24
Transition Unit (12)	2	1	0	2	0	0	0	0	0	0	0	0
Detention Unit (36)	0	0	0	0	0	0	0	0	27	8	2	37
<b>Harris County Psychiatric Center (21)</b>	<b>7</b>	<b>6</b>	<b>3</b>	<b>16</b>	<b>9</b>	<b>4</b>	<b>7</b>	<b>20</b>	<b>10</b>	<b>5</b>	<b>6</b>	<b>22</b>
<b>Leadership Academy (96)</b>	<b>39</b>	<b>23</b>	<b>6</b>	<b>68</b>	<b>39</b>	<b>32</b>	<b>7</b>	<b>78</b>	<b>51</b>	<b>34</b>	<b>8</b>	<b>93</b>
<b>Harris County Youth Village (128)</b>	<b>36</b>	<b>37</b>	<b>12</b>	<b>85</b>	<b>41</b>	<b>34</b>	<b>16</b>	<b>92</b>	<b>39</b>	<b>27</b>	<b>13</b>	<b>79</b>
<b>Detention Center (250)</b>	<b>126</b>	<b>72</b>	<b>21</b>	<b>221</b>	<b>171</b>	<b>78</b>	<b>34</b>	<b>283</b>	<b>159</b>	<b>70</b>	<b>24</b>	<b>256</b>
Detention Assessment Unit	13	9	4	26	16	10	6	33	18	13	4	35
Detention Girls Intervention	0	0	0	0	0	0	0	0	3	3	0	6
<b>Private Placement</b>												
Texsun Management Group	6	6	5	17	7	9	1	18	5	4	0	8
Center for Success & Independence	1	2	0	3	0	7	0	7	0	1	0	1
Embracing Destiny Foundation	2	0	1	3	0	0	0	0	0	0	0	0
Gulf Coast Trade Center	1	0	1	2	0	0	0	0	0	0	0	0
Hector Garza Center	8	5	6	19	0	0	0	0	0	0	0	0
Rockdale Justice Center	4	1	3	7	10	1	2	13	1	0	0	1
Renewed Strength Residential	1	0	0	1	0	0	0	0	0	0	0	0
Victoria County JJC	2	2	0	4	7	1	0	8	2	0	0	2
We Care Treatment Center	3	1	0	4	3	1	0	4	0	1	0	1
Boys Town	1	0	0	1	1	0	0	1	0	0	1	1
Lakeside Academy (Sequel Youth)	0	0	0	0	0	0	0	0	1	0	1	1
Mingus Mountain Estate	0	0	0	0	2	0	0	2	1	0	0	1
Pegasus Schools, Inc.	0	0	0	0	3	2	2	7	0	7	1	8
Clarinda Academy (Sequel Youth Service)	0	0	0	0	0	2	0	2	0	0	0	0
Glen Mills Schools	0	0	0	0	2	3	1	6	15	5	0	20
Woodward Academy	0	0	0	0	0	0	2	2	1	1	1	3
Mountain Home Academy	0	0	0	0	0	0	1	1	1	0	0	1

\*Only placements with youth enrolled during the month are shown. Totals are not exact due to other races that are not shown and due to rounding effects because average numbers are used. The quantity of bed space increased at HCP from 16 to 21 as of March 2015. BBRC Pre-Adjudicated Detention was opened in June 2015. The post-adjudicated Detention Girls Intervention Unit launched April 2016.



# JUVENILE PROBATION DEPARTMENT

Tom Brooks, Executive Director



## Executive Monthly Activity Report – May, 2016

Page 13 of 13 pages

### Murder Activity\*

	2006	2007	2009	2010	2011	2012	2013	2014	2015	Jan-May 2016
<b>Age</b>										
10										
11										
12			2							
13	1						1			
14		1	4		1			1		
15	6	7		3	2	2	2	1	2	1
16+	9	6	10	15	7	6	6	6	5	2
<b>TOTAL</b>	<b>16</b>	<b>14</b>	<b>16</b>	<b>18</b>	<b>10</b>	<b>8</b>	<b>9</b>	<b>8</b>	<b>7</b>	<b>3</b>
<b>Race/Sex</b>										
Black Female		1	2	1	2					
Black Male	3	6	8	11		1	8	4	6	
Hispanic Female		1				1				1
Hispanic Male	8	1	5	6	7	4	1	4	1	2
Asian Female										
Asian Male										
White Female	2					1				
White Male	3	5	1		1	1				
Other Female										
Other Male										
<b>TOTAL</b>	<b>16</b>	<b>14</b>	<b>16</b>	<b>18</b>	<b>10</b>	<b>8</b>	<b>9</b>	<b>8</b>	<b>7</b>	<b>3</b>
<b>School District</b>										
Aldine	4	1	1		1	2		1		
Alief			1			2		1		1
Brazos School					2					
Channelview										
Cypress-Fairbanks	2			1		2		1		
Deer Park										
Galena Park			4	2			1			
Goose Creek		1						1		
Houston	3	2	4	2	2		2	2	4	
Houston Can Academy					1		1			
Humble										
Katy	1	1	1							1
Klein		1								
La Porte										
North Forest			1	5			1			
Pasadena				1						1
Clear Creek								1		
Spring			3	3			1		1	
Spring Branch									1	
H.C.Education Dept.										
College/University		1	1							
Private/Parochial	2	4		3			2		1	
Juvenile Board Charter School										
Out of County	1	1		1	2	1		1		
Not Available	3	2			2	1	1			
<b>TOTAL</b>	<b>16</b>	<b>14</b>	<b>16</b>	<b>18</b>	<b>10</b>	<b>8</b>	<b>9</b>	<b>8</b>	<b>7</b>	<b>3</b>

\*Of the 2016 homicide charges, there were three (3) actual deaths. Please note referrals are not unique to individuals.

