

# JUVENILE PROBATION DEPARTMENT

Tom Brooks, Executive Director



## Executive Monthly Activity Report – October, 2016

### 2016 Referral

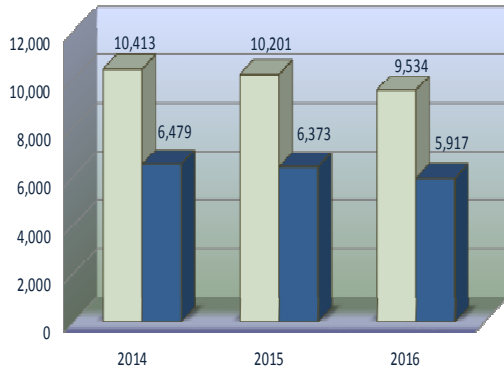
Charges Received	
January	931
February	1,209
March	1,056
April	1,085
May	1,112
June	892
July	610
August	762
September	911
October	966
November	
December	
<b>TOTAL</b>	<b>9,534</b>
<b>AVERAGE</b>	<b>953</b>
<b>YOUTH</b>	<b>5,917</b>

### Harris County Census Data Comparisons\*

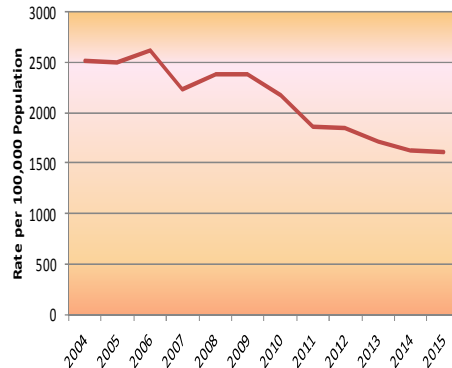
Year	Census Data*	Delinquent Conduct		Felony		Murder	
		Referrals	Rate/100,000	Referrals	Rate/100,000	Referrals	Rate/100,000
2004	444,722	11,184	2,515	3,703	833	14	3
2005	448,861	11,187	2,492	3,725	830	13	3
2006	451,874	11,790	2,609	3,850	852	16	4
2007	454,279	10,974	2,416	3,594	791	14	3
2008	453,639	10,333	2,278	3,107	685	27	6
2009	452,494	10,795	2,386	2,899	641	16	4
2010	453,180	9,845	2,172	2,398	529	18	4
2011	458,330	8,554	1,866	2,231	487	10	2
2012	432,521	7,988	1,847	2,038	471	8	2
2013	436,452	7,496	1,717	2,019	463	9	2
2014	440,692	7,188	1,631	2,024	459	8	2
2015	444,725	7,153	1,608	2,123	477	7	2

\*Census Project Data for youth aged 10-17

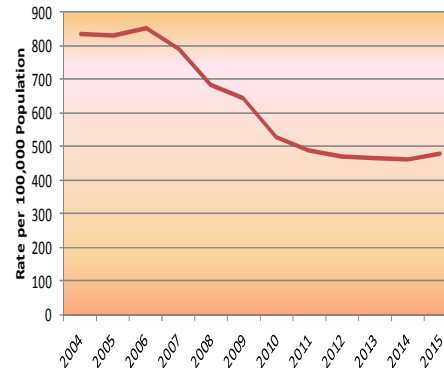
Charges Received as Compared to Youth Involved January-October 2014-2016



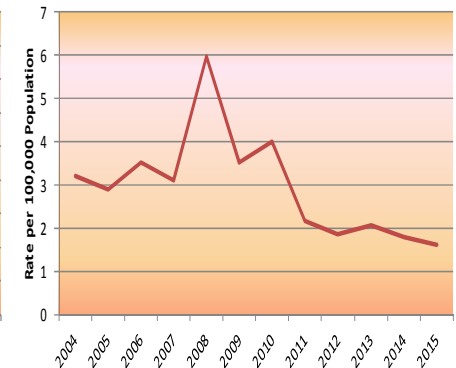
Delinquent Conduct Referrals



Felony Referrals



Murder Referrals



# JUVENILE PROBATION DEPARTMENT

Tom Brooks, Executive Director

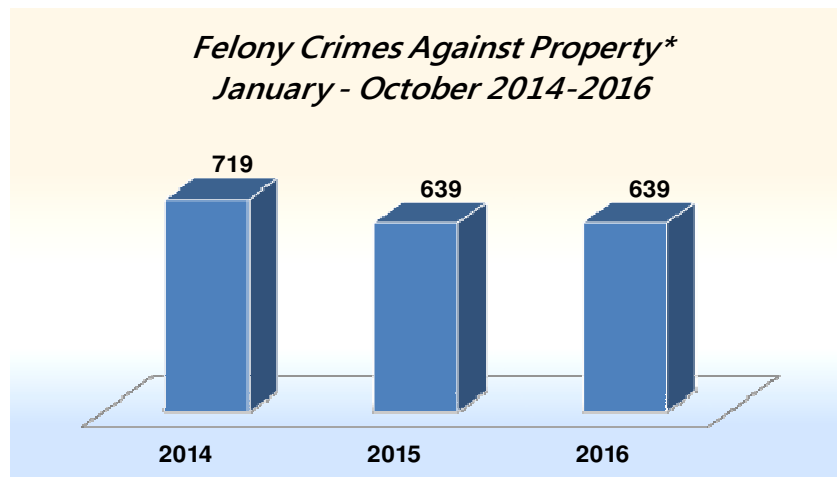


## Executive Monthly Activity Report – October, 2016

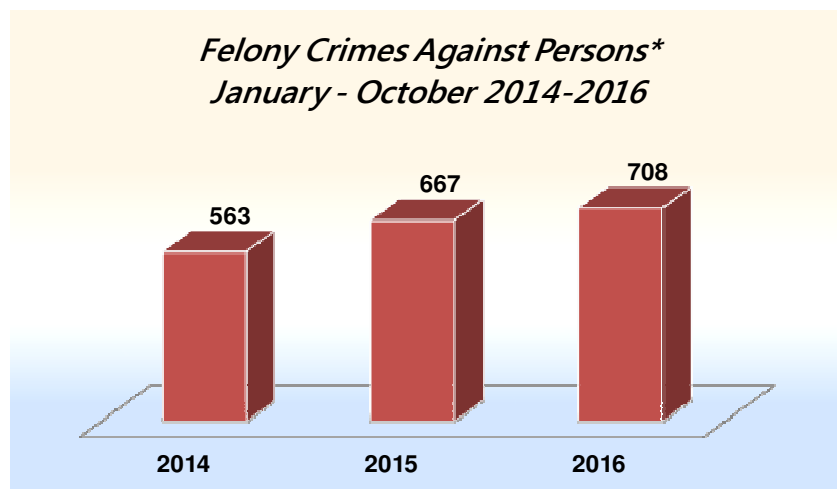
Page 2 of 13 pages

### Type of Charge Based on Crime Category

	Jan	Feb	Mar	Apr	May	Jun	Jul	Aug	Sep	Oct	Nov	Dec	TOTAL	% TOTAL
Person (Felony)	75	102	78	83	64	52	41	59	75	79			708	7.4%
Person (Misdemeanor)	80	102	94	109	100	51	32	41	80	91			780	8.2%
Property (Felony)*	77	69	62	68	73	52	49	55	70	64			639	6.7%
Property (Misdemeanor)	145	139	129	191	144	141	86	97	125	114			1311	13.8%
Illegal Substance	91	173	113	123	120	57	30	46	114	125			992	10.4%
All Others	118	129	122	143	122	115	69	93	101	134			1146	12.0%
CHINS	15	29	24	35	30	26	3	37	9	12			220	2.3%
Violations of Probation	80	112	91	82	95	80	62	64	81	78			825	8.7%
Administrative Offenses	250	354	343	251	364	318	238	270	256	269			2913	30.6%
<b>TOTAL</b>	<b>931</b>	<b>1209</b>	<b>1056</b>	<b>1085</b>	<b>1112</b>	<b>892</b>	<b>610</b>	<b>762</b>	<b>911</b>	<b>966</b>	<b>0</b>	<b>0</b>	<b>9534</b>	<b>100.0%</b>



\*Arson, Burglary, Theft, AutoTheft, Unauthorized Use of a Motor Vehicle, and Criminal Mischief.



\*Murder, Robbery, Assault, and Sexual Assault.



**JUVENILE PROBATION DEPARTMENT**

*Tom Brooks, Executive Director*



**Executive Monthly Activity Report – October, 2016**

Page 3 of 13 pages

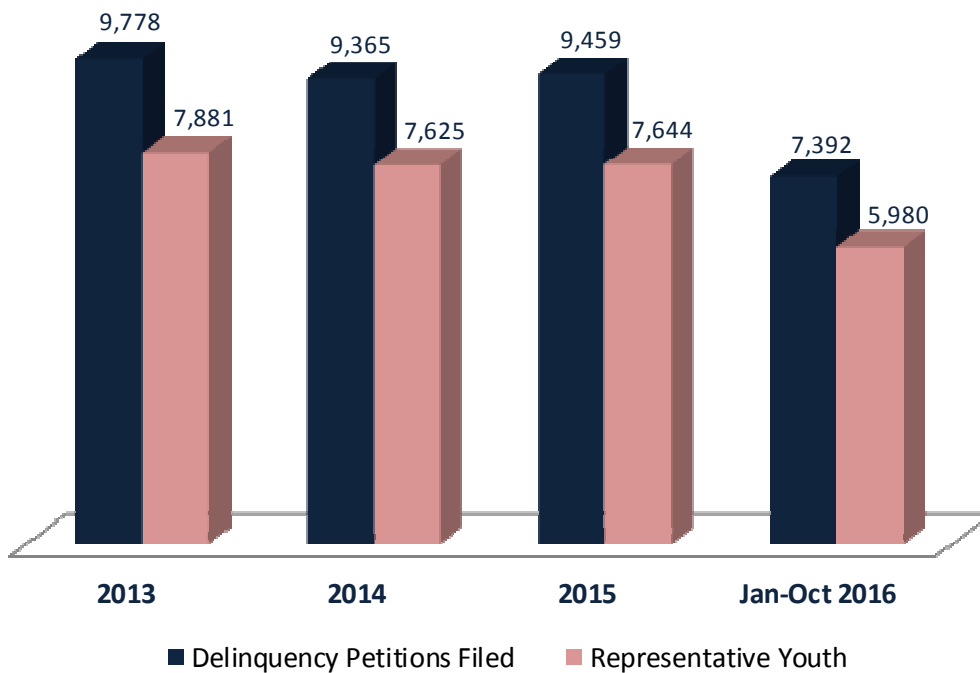
*Cases Assigned and Disposed  
January - October 2016*

	313th		314th		315th		TOTALS	
	Assigned	Disposed	Assigned	Disposed	Assigned	Disposed	ASSIGNED	DISPOSED
<b>Petitions*</b>	2602	3086	2386	2869	2404	2843	7392	8798
<b>Youth Involved</b>	2097	2320	1929	2174	1954	2009	5980	6503

\*Cases that are off the docket, withdrawn, under advisement, passed, or included with another referral have been deleted from these counts.

*Petitions Filed and Representative Youth*

	Delinquency Petitions Filed	Representative Youth
Jan-Oct 2016	7,392	5,980
2015	9,459	7,644
2014	9,365	7,625
2013	9,778	7,881



# JUVENILE PROBATION DEPARTMENT

Tom Brooks, Executive Director



## Executive Monthly Activity Report – October, 2016

Page 4 of 13 pages

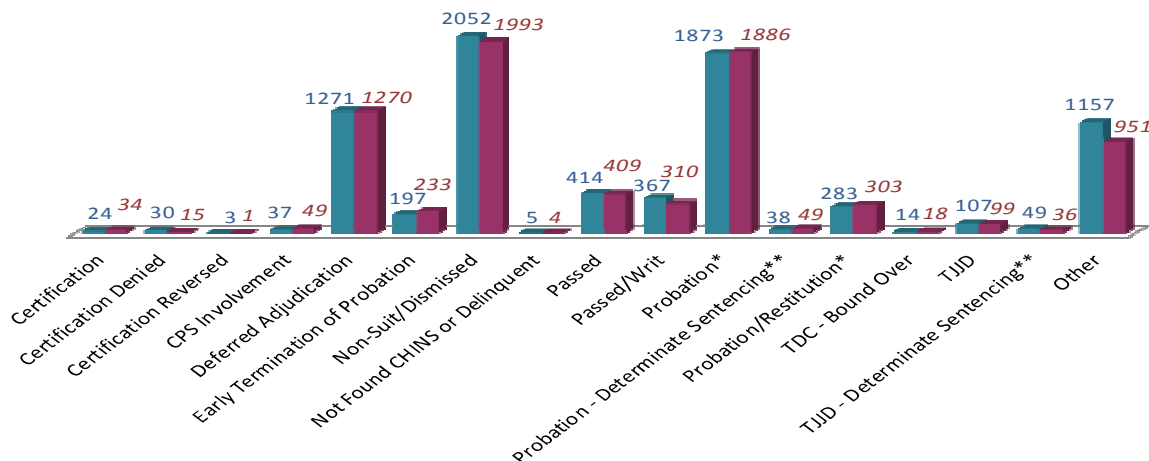
### Court Activity\* January - October 2016

COURT DECISIONS	Black		Hispanic		White		Other		DECISION	
	Female	Male	Female	Male	Female	Male	Female	Male	YOUTH	TOTAL
Certification	0	26	1	5	1	1	0	0	34	58
Certification Denied	1	9	0	4	0	1	0	0	15	23
Certification Reversed	0	0	0	0	1	0	0	0	1	1
CPS Involvement	7	19	2	5	4	12	0	0	49	75
Deferred Adjudication	177	378	126	289	95	194	3	8	1270	1394
Early Termination of Probation	24	80	16	70	7	34	1	1	233	326
Non-Suit/Dismissed	244	665	148	442	137	341	4	12	1993	2249
Not Found CHINS or Delinquent	0	3	0	1	0	0	0	0	4	4
Passed	72	136	37	79	24	57	1	3	409	911
Passed/Writ	41	111	23	83	12	37	2	1	310	541
Probation*	206	717	146	535	63	210	3	6	1886	3484
Probation - Determinate Sentencing**	3	23	0	16	0	6	0	1	49	54
Probation/Restitution*	15	144	9	87	4	43	0	1	303	363
TDC - Bound Over	0	13	0	4	1	0	0	0	18	20
TJJD	6	54	1	25	1	12	0	0	99	151
TJJD - Determinate Sentencing**	1	20	0	14	0	1	0	0	36	47
Other	107	338	70	246	48	130	3	9	951	1304
<b>TOTAL</b>	<b>904</b>	<b>2736</b>	<b>579</b>	<b>1905</b>	<b>398</b>	<b>1079</b>	<b>17</b>	<b>42</b>	<b>7660</b>	<b>11005</b>

\*Includes Changes of Custody. Youth may be counted multiple times if received multiple decisions within the noted time period.

\*\*Approximate numbers – using declared determinate sentencing (DDS) as court result.

### Youth Comparison January - October 2015 / 2016



**JUVENILE PROBATION DEPARTMENT**

*Tom Brooks, Executive Director*



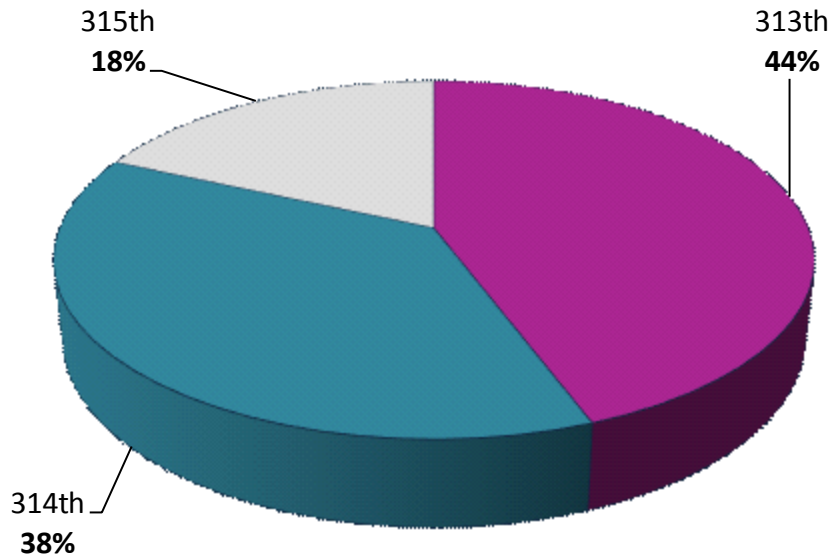
**Executive Monthly Activity Report – October, 2016**

Page 5 of 13 pages

*TJJD Dispositions by Court*

Disposition Year	Disposition	313th		314th		315th		TOTAL	TOTAL
		Youth	Dispositions	Youth	Dispositions	Youth	Dispositions	Youth	Dispositions
<i>Jan-Oct 2016</i>	TJJD	58	98	49	58	24	42	131	198
<i>2015</i>	TJJD	70	107	74	100	36	54	180	261
<i>2014</i>	TJJD	38	59	38	61	26	41	102	161
<i>2013</i>	TJJD	55	75	46	72	22	39	123	186

*TJJD Commitments By Court (Youth)  
January - October 2016*



**JUVENILE PROBATION DEPARTMENT**

*Tom Brooks, Executive Director*



**Executive Monthly Activity Report – October, 2016**

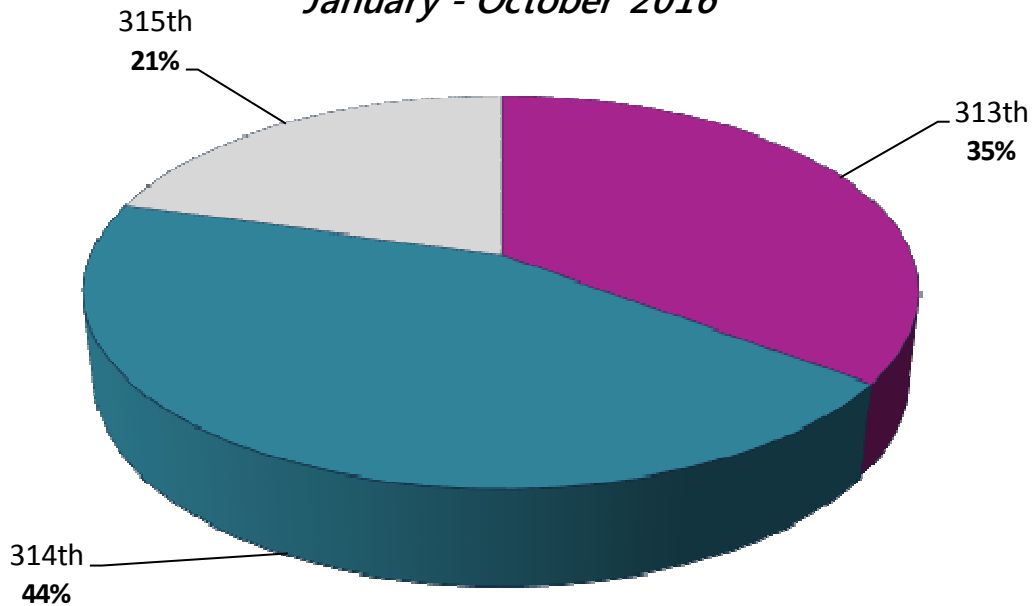
Page 6 of 13 pages

*Certifications*

Disposition Year	Court			Youth Total	Petition Total
	313	314	315		
2016	12	15	7	34	58
2015	11	10	7	28	46
2014	11	20	3	34	63
2013	17	11	9	37	44
2012	16	15	1	32	47
2011	16	19	3	38	53
2010	27	14	19	60	87
2009	22	18	20	60	84
2008	34	31	23	88	135
2007	40	26	16	82	114
2006	42	26	22	90	120
2005	28	10	18	56	93

*Certifications by Court (Youth)*

*January - October 2016*



# JUVENILE PROBATION DEPARTMENT

Tom Brooks, Executive Director



## Executive Monthly Activity Report – October, 2016

Page 7 of 13 pages

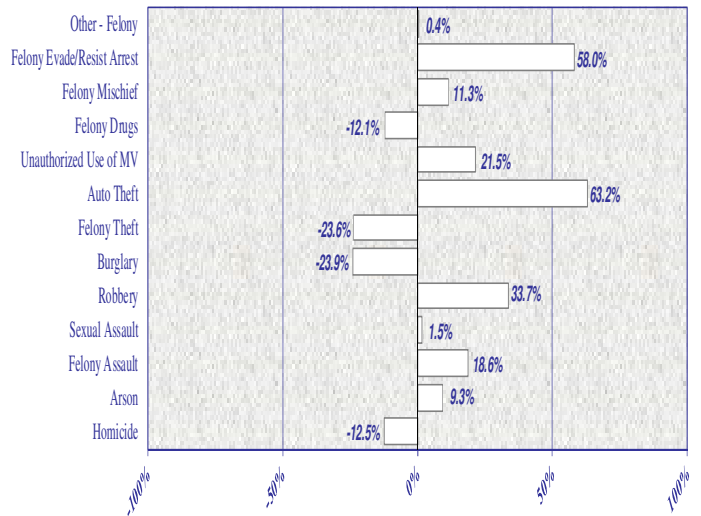
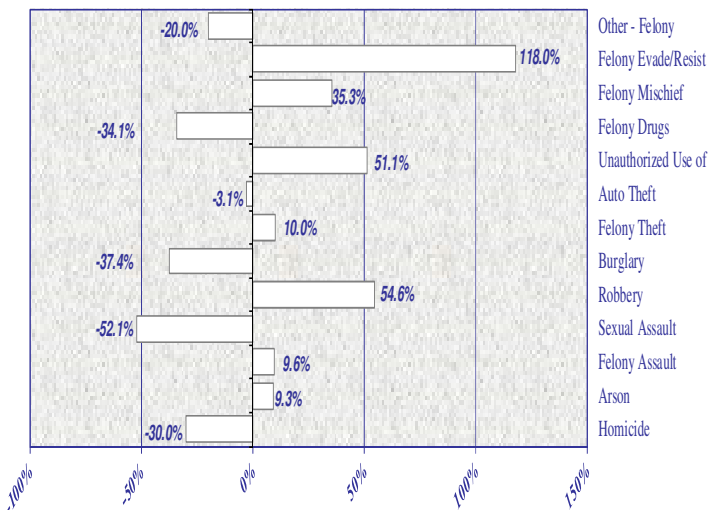
### Most Serious Charge Activity\*

	Jan-Oct											
	2005	2006	2007	2008	2009	2010	2011	2012	2013	2014	2015	2016
Homicide	13	16	14	27	16	18	10	8	9	8	7	9
Arson	57	57	29	53	56	52	43	47	31	43	47	25
Felony Assault	419	402	351	328	336	351	303	295	304	279	331	293
Sexual Assault	249	231	171	149	148	142	142	128	113	67	68	102
Robbery	330	357	374	351	345	324	282	263	357	326	436	304
Burglary	696	703	703	685	788	552	542	514	450	447	340	268
Felony Theft	69	110	106	84	110	84	99	110	117	144	110	95
Auto Theft	52	47	39	33	22	22	32	32	20	19	31	26
Unauthorized Use of MV	276	251	222	183	153	122	130	101	106	163	198	195
Felony Drugs	665	744	740	407	349	309	232	183	159	174	153	96
Mischief/Felony	68	48	84	59	82	53	51	62	57	62	69	30
Evade/Resist Arrest Felony	99	122	85	81	80	55	50	53	60	69	109	109
Other - Felony	427	495	409	472	399	313	313	242	236	223	224	170
<b>Serious Offense Totals</b>	<b>3420</b>	<b>3583</b>	<b>3327</b>	<b>2912</b>	<b>2884</b>	<b>2397</b>	<b>2229</b>	<b>2038</b>	<b>2019</b>	<b>2024</b>	<b>2123</b>	<b>1722</b>
<b>Total Referrals</b>	<b>23,480</b>	<b>24,877</b>	<b>23,164</b>	<b>20,885</b>	<b>19,828</b>	<b>17,978</b>	<b>15,873</b>	<b>14,402</b>	<b>13,793</b>	<b>12,492</b>	<b>12,249</b>	<b>9,534</b>
<b>Serious Offense Percent</b>	<b>15%</b>	<b>14%</b>	<b>14%</b>	<b>14%</b>	<b>15%</b>	<b>13%</b>	<b>14%</b>	<b>14%</b>	<b>15%</b>	<b>16%</b>	<b>17%</b>	<b>18%</b>

\*This chart contains selected offense categories which are summed and shown as a percentage of ALL ACTIVITY TOTALS

### Five Year Offense Comparison Percentage Change, 2011-2015

### Most Current Completed Year Comparison Percentage Change, 2014-2015



"...holding youth accountable while offering support, guidance and direction to help them succeed." 2009 Annual Report

# JUVENILE PROBATION DEPARTMENT

Tom Brooks, Executive Director



## Executive Monthly Activity Report – October, 2016

Page 8 of 13 pages

The following table presents a comparison of *January-October 2015* referral activity as contrasted to *January-October 2016* referral activity. During this month, the data shows an overall 6.5% decrease in referral activity. Despite this decrease, increases are found for Sexual Assault (117.0%), Homicide (50.0%), Felony Evade/Resisting Arrest (22.5%), and Unauthorized Use of a Motor Vehicle (13.4%). Several decreases include Felony Mischief (-45.5%), Arson (-28.6%), Felony Drugs (-26.2%), and Misdemeanor A/B Theft (-21.9%). Less serious offenses decreased by 15.2%.

*There were 9 referrals\* for homicide during January-October 2016, compared to 6 for the same time period of 2015.*

### Offense Charge per Referral\*

Offense	Black		Hispanic		White		Other		Jan-Oct	Jan-Oct	Jan-Oct
	Female	Male	Female	Male	Female	Male	Female	Male	2015	2016	% Change
Homicide*	0	3	1	3	0	2	0	0	6	9	50.0%
Arson	2	6	4	3	2	7	0	1	35	25	-28.6%
Assault - Felony	47	124	14	58	13	34	0	3	255	293	14.9%
- MA/MB	148	267	92	130	61	76	3	2	716	779	8.8%
Sexual Assault	2	44	0	28	4	21	0	3	47	102	117.0%
Robbery	7	189	5	86	1	14	0	2	359	304	-15.3%
Burglary	9	107	7	81	4	60	0	0	257	268	4.3%
Theft - Felony	11	53	5	14	2	9	1	0	94	95	1.1%
- MA/MB	84	230	92	111	91	94	8	8	919	718	-21.9%
Auto Theft	0	12	1	7	1	4	0	1	26	26	0.0%
Unauthorized Use of a Motor Vehicle	4	117	3	48	3	16	1	3	172	195	13.4%
Drugs - Felony	4	17	5	39	8	21	1	1	130	96	-26.2%
- MA/MB	30	185	70	331	57	202	5	7	925	887	-4.1%
Mischief/Felony	3	11	1	6	2	7	0	0	55	30	-45.5%
- MA/MB	27	73	12	51	6	34	0	2	197	205	4.1%
Evade/Resisting Arrest Felony	1	59	4	31	1	12	0	1	89	109	22.5%
- MA/MB	34	182	23	126	8	70	0	3	455	446	-2.0%
DWI - MA/MB	0	0	0	4	0	4	0	0	3	8	166.7%
Trespass - MA/MB	29	172	22	96	11	46	1	2	425	379	-10.8%
Other - Felony	18	58	6	50	2	35	0	1	177	170	-4.0%
- MA/MB	52	145	25	100	22	65	0	2	403	411	2.0%
<b>Sub-Total</b>	<b>512</b>	<b>2054</b>	<b>392</b>	<b>1403</b>	<b>299</b>	<b>833</b>	<b>20</b>	<b>42</b>	<b>5745</b>	<b>5555</b>	<b>-3.3%</b>
Assault - MC	0	0	0	0	0	1	0	0	2	1	-50.0%
Theft - MC	0	4	0	4	1	0	0	0	1	9	800.0%
Drugs - MC	0	0	0	0	0	1	0	0	2	1	-50.0%
Other - MC	0	0	0	0	0	0	0	0	8	0	-100.0%
Disorderly Conduct	0	2	0	0	0	0	0	0	2	2	0.0%
City Ordinance Violations	0	0	0	0	2	0	0	0	0	2	0.0%
Violations of Probation	71	365	37	254	21	74	0	3	976	825	-15.5%
<b>Sub-Total</b>	<b>71</b>	<b>371</b>	<b>37</b>	<b>258</b>	<b>24</b>	<b>76</b>	<b>0</b>	<b>3</b>	<b>991</b>	<b>840</b>	<b>-15.2%</b>
Runaways - CHINS	29	40	36	32	32	48	2	0	185	219	18.4%
Other CHINS	0	1	0	0	0	0	0	0	75	1	-98.7%
TJJD Runaways	0	3	0	2	0	1	0	0	19	6	-68.4%
Administrative Actions *	264	1199	207	802	93	326	6	16	3186	2913	-8.6%
<b>Sub-Total</b>	<b>293</b>	<b>1243</b>	<b>243</b>	<b>836</b>	<b>125</b>	<b>375</b>	<b>8</b>	<b>16</b>	<b>3465</b>	<b>3139</b>	<b>-9.4%</b>
<b>GRAND TOTAL</b>	<b>876</b>	<b>3668</b>	<b>672</b>	<b>2497</b>	<b>448</b>	<b>1284</b>	<b>28</b>	<b>61</b>	<b>10201</b>	<b>9534</b>	<b>-6.5%</b>

\*Administrative Actions may include: motion to modify order, hold as material witness, request for change of custody, issuance of pick-up order, or motion for release and transfer. \*Of the 9 homicide offense referrals for 2016, there were 9 actual deaths.





# JUVENILE PROBATION DEPARTMENT

Tom Brooks, Executive Director



## Executive Monthly Activity Report – October, 2016

Page 9 of 13 pages

### Top 10 Felony and Misdemeanor Offenses

Top 10 Felony Offenses Jan-Oct 2016	Black		Hispanic		White		Other		Jan-Oct	Jan-Oct	Jan-Oct
	Female	Male	Female	Male	Female	Male	Female	Male	2015	2016	% Change
Burglary of a Habitat (Felony 1)	7	69	4	40	1	33	0	0	151	154	2.0%
Aggravated Robbery (Felony 1)	4	132	4	68	0	12	0	2	237	222	-6.3%
Burglary of a Building (Jail Felony)	2	35	3	34	2	20	0	0	104	96	-7.7%
Possession/Personal Use - Group 1, Less than 1 Gram (Jail Felony)	0	5	1	10	2	6	0	0	64	24	-62.5%
Unauthorized Use of a Motor Vehicle (Jail Felony)	4	117	3	48	3	16	1	3	172	195	13.4%
Robbery (Felony 2)	3	55	1	18	1	2	0	0	120	80	-33.3%
Aggravated Assault Uses Deadly Weapon (Felony 2)	4	32	0	17	1	9	0	1	60	64	6.7%
Assault, Bodily Injury Against Public Servant (Felony 3)	24	43	10	14	8	8	0	1	85	108	27.1%
Aggravated Sexual Assault - Children Under 14 Years of Age (Felony 1)	0	34	0	17	4	14	0	2	18	71	294.4%
Theft From Person of Another (Jail Felony)	8	35	0	3	0	0	0	0	44	46	4.5%
<b>TOTAL</b>	<b>56</b>	<b>557</b>	<b>26</b>	<b>269</b>	<b>22</b>	<b>120</b>	<b>1</b>	<b>9</b>	<b>1055</b>	<b>1060</b>	<b>0.5%</b>

Top 10 Misdemeanor Offenses Jan-Oct 2016	Black		Hispanic		White		Other		Jan-Oct	Jan-Oct	Jan-Oct
	Female	Male	Female	Male	Female	Male	Female	Male	2015	2016	% Change
Theft - \$50 - \$499.99 Value (Misd B)	19	31	11	10	14	9	2	2	671	98	-85.4%
Assault with Bodily Injury (Misd A)	118	202	59	81	28	52	2	0	455	542	19.1%
Possession of Marijuana for Personal Use - Less than 2 oz (Misd B)	26	165	54	284	40	173	5	6	786	753	-4.2%
Evading Arrest Detention (Misd A)	22	161	13	105	6	57	0	2	379	366	-3.4%
Theft - \$500 - \$1,500 Value (Misd A)	7	11	7	10	1	2	0	0	133	38	-71.4%
Criminal Trespass - General (Misd B)	19	125	15	63	10	39	1	2	333	274	-17.7%
Assault-Family Member (Misd A)	28	63	33	47	32	22	1	2	254	228	-10.2%
Mischief - \$50-\$499.99 Property Damage (Misd B)	4	26	8	12	3	9	0	0	136	62	-54.4%
Burglary of Motor Vehicle (Misd A)	0	48	3	27	3	31	0	1	112	113	0.9%
Terroristic Threat - General (Misd B)	6	40	1	10	4	8	0	1	81	70	-13.6%
<b>TOTAL</b>	<b>249</b>	<b>872</b>	<b>204</b>	<b>649</b>	<b>141</b>	<b>402</b>	<b>11</b>	<b>16</b>	<b>3340</b>	<b>2544</b>	<b>-23.8%</b>



# JUVENILE PROBATION DEPARTMENT

Tom Brooks, Executive Director



## Executive Monthly Activity Report – October, 2016

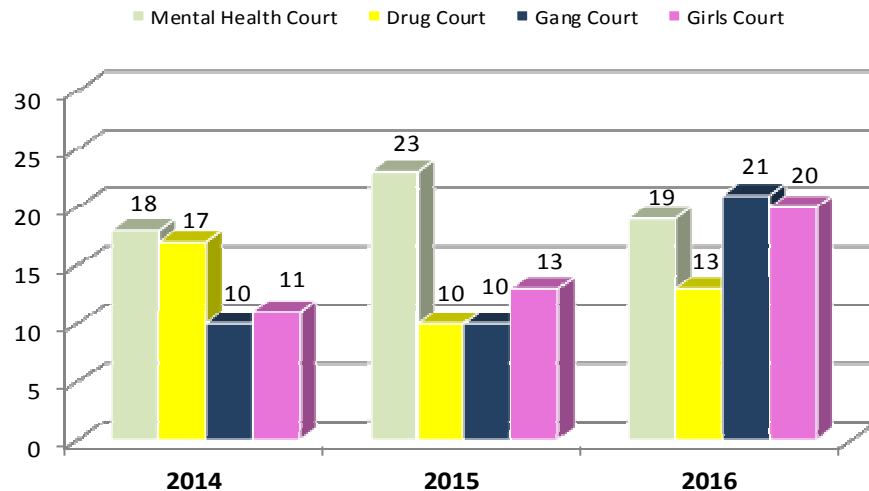
Page 10 of 13 pages

### Field Services Activity\*

Type of Probation Service	October					
	2014		2015		2016	
	Caseload	JPO Avg	Caseload	JPO Avg	Caseload	JPO Avg
Community Supervision	<b>1670</b>	26	<b>1618</b>	27	<b>1795</b>	34
Adjudication	847		820		1029	
Deferred Adjudication	823		798		766	
Specialized Supervision	<b>1037</b>		<b>854</b>		<b>713</b>	
CUPS 9	207		187		165	
Mental Health	129	17	128	17	117	17
Sex Offender	78	13	59	11	48	14
CUPS 7	256		231		192	
Aftercare	256	16	231	16	192	13
CUPS 6	412		294		266	
Female Intervention	45	13	33	11	35	7
Intensive	367	16	261	14	231	13
YESS Program	162	14	142	16	90	13
Deferred Prosecution	<b>379</b>		<b>385</b>		<b>265</b>	
90-Day	175	8	192	8	122	6
180 Day	204	29	193	22	143	15
<b>Total</b>	<b>3086</b>		<b>2857</b>		<b>2773</b>	

\*Youth caseload is based on a daily caseload average for the month shown. JPO caseload average is calculated using the last JPO of record for the casefiles for the month shown. Effective November 1, 2015, the name of the Gang Unit was changed to the Youth Empowerment Services and Supervision (YESS) Program.

### Specialized Court Activity – October\*\*



\*\*Specialized Court Activity represents average youth count for the month shown.



# JUVENILE PROBATION DEPARTMENT

Tom Brooks, Executive Director



## Executive Monthly Activity Report – October, 2016

Page 11 of 13 pages

### Youth Admitted to Facilities\*

Facilities	Year Ending		Jan-Oct 2016
	2014	2015	
<b>Burnett-Bayland Reception Center</b>	<b>552</b>	<b>482</b>	<b>306</b>
Residential Assessment (BRU)	125	92	0
Drug Unit (BDU)	149	125	75
Brief Structural Intervention (BIU)	166	188	162
Psychological Unit (BMU)	47	0	0
Phoenix Unit (BPU)	44	77	69
Transition Unit (BTU)	21	0	0
<b>Leadership Academy (HLA)</b>	<b>219</b>	<b>274</b>	<b>210</b>
<b>Youth Village (HYV)</b>	<b>251</b>	<b>245</b>	<b>208</b>
County Post-Adjudication Subtotal	1022	1001	724
<b>Private Placement</b>	<b>165</b>	<b>140</b>	<b>46</b>
Boys Town (BOY)	1	3	0
TMG/Hays County Juv Ctr (CCI)	43	47	5
Clarinda Academy (CLR)	0	7	0
Center for Success (CSD)	11	11	6
Everyday Life (EDL)	5	0	0
Gulf Coast Trade Ctr (GCT)	8	0	0
Glen Mills Schools (GMS)	2	16	14
Hector Garza Ctr (HGC)	29	0	0
Lakeside Academy (LSA)	0	1	1
Mingus Mountain Estate (MME)	0	9	4
Mountain Home Academy (MTN)	0	2	0
Pegasus Schools, Inc. (PGS)	6	6	5
Rockdale Justice Ctr (RJC)	19	14	3
Renewed Strength Treatment Ctr (RSR)	3	0	0
Victoria County JJC (VIC)	19	12	3
We Care Treatment Ctr (WCT)	16	7	2
Woodward Academy (WWA)	0	5	3
All Post-Adjudication Subtotal	1187	1141	770
<b>Detention Center* (DET)</b>	<b>2888</b>	<b>2646</b>	<b>2382</b>
Detention Residential Assessment (DRU)	752	782	737
Detention Girls Intervention (GIP)	0	0	41
<b>Burnett-Bayland Detention (BDP)</b>	<b>0</b>	<b>78</b>	<b>164</b>
<b>Harris County Psychiatric (HCP)</b>	<b>109</b>	<b>143</b>	<b>108</b>
<b>TOTAL</b>	<b>4936</b>	<b>4790</b>	<b>4202</b>

\*Youth admitted is a count of individual youth, not the number of admits each may have had at that particular facility. If a youth was admitted at two different facilities he was counted once at each facility. The quantity of bed space increased at HCP from 16 to 21 as of March 2015. BBRC Pre-Adjudicated Detention was opened in June 2015. The post-adjudicated Detention Girls Intervention Unit launched April 2016.



“...transforming troubled youth into productive citizens...through commitment, community involvement and collaboration.” 2010 Annual Report



# JUVENILE PROBATION DEPARTMENT

Tom Brooks, Executive Director

## Executive Monthly Activity Report – October, 2016

Page 12 of 13 pages

### Average Daily Population - October\*

County Facilities (available beds)	2014				2015				2016			
	Black	Hispanic	White	Total	Black	Hispanic	White	Total	Black	Hispanic	White	Total
<b>Burnett Bayland Reception Center (144)</b>	<b>40</b>	<b>34</b>	<b>17</b>	<b>88</b>	<b>41</b>	<b>32</b>	<b>12</b>	<b>86</b>	<b>52</b>	<b>40</b>	<b>15</b>	<b>109</b>
Residential Assessment (12)	1	5	1	4	0	0	0	0	0	0	0	0
Drug Unit (24)	17	19	11	47	12	15	6	34	8	13	6	27
Brief Structural Intervention (24)	9	7	3	20	8	5	2	14	11	4	3	19
Phoenix Unit (12)	13	3	2	17	12	8	2	22	15	7	5	27
Detention Unit (36)	0	0	0	0	9	4	2	16	18	16	1	36
Harris County Psychiatric Center (21)	7	6	2	16	11	4	7	22	12	5	4	21
Leadership Academy (96)	42	20	4	67	53	27	10	90	47	34	10	92
Harris County Youth Village (128)	44	27	10	81	43	44	12	99	47	30	20	97
Detention Center (250)	129	62	16	208	143	66	25	235	172	83	20	278
Detention Assessment Unit	13	17	4	34	14	9	5	27	19	10	5	33
Detention Girls Intervention	0	0	0	0	0	0	0	0	1	1	1	3
<b>Private Placement</b>												
Texsun Management Group	12	4	3	19	9	5	2	17	0	0	0	0
Center for Success & Independence	1	2	0	2	0	3	0	3	1	2	1	4
Hector Garza Center	3	3	2	8	0	0	0	0	0	0	0	0
Rockdale Justice Center	6	4	1	10	4	0	0	4	2	0	0	2
Victoria County JJC	2	3	0	5	1	1	1	3	1	0	1	1
We Care Treatment Center	3	1	0	4	0	1	1	2	0	0	0	0
Boys Town	0	0	0	0	0	0	1	1	0	0	0	0
Lakeside Academy (Sequel Youth)	0	0	0	0	0	0	0	0	0	0	1	1
Mingus Mountain Estate	0	0	0	0	5	1	1	7	2	1	0	3
Pegasus Schools, Inc.	2	1	1	4	2	3	2	7	0	4	0	4
Clarinda Academy (Sequel Youth Service)	0	0	0	0	3	0	2	5	0	0	0	0
Glen Mills Schools	0	0	0	0	5	7	2	13	9	2	0	12
Woodward Academy	0	0	0	0	0	0	2	3	0	1	2	3
Mountain Home Academy	0	0	0	0	0	0	0	0	1	0	0	1

\*Only placements with youth enrolled during the month are shown. Totals are not exact due to other races that are not shown and due to rounding effects because average numbers are used. The quantity of bed space increased at HCP from 16 to 21 as of March 2015. BBRC Pre-Adjudicated Detention was opened in June 2015. The post-adjudicated Detention Girls Intervention Unit launched April 2016.



# JUVENILE PROBATION DEPARTMENT

Tom Brooks, Executive Director



## Executive Monthly Activity Report – October, 2016

Page 13 of 13 pages

### Murder Activity\*

	2006	2007	2009	2010	2011	2012	2013	2014	2015	Jan-Oct 2016
<b>Age</b>										
10										
11										
12			2							
13	1						1			
14		1	4		1			1		
15	6	7		3	2	2	2	1	2	2
16+	9	6	10	15	7	6	6	6	5	7
<b>TOTAL</b>	<b>16</b>	<b>14</b>	<b>16</b>	<b>18</b>	<b>10</b>	<b>8</b>	<b>9</b>	<b>8</b>	<b>7</b>	<b>9</b>
<b>Race/Sex</b>										
Black Female		1	2	1	2					
Black Male	3	6	8	11		1	8	4	6	3
Hispanic Female		1				1				1
Hispanic Male	8	1	5	6	7	4	1	4	1	4
Asian Female										
Asian Male										
White Female	2					1				
White Male	3	5	1		1	1				1
Other Female										
Other Male										
<b>TOTAL</b>	<b>16</b>	<b>14</b>	<b>16</b>	<b>18</b>	<b>10</b>	<b>8</b>	<b>9</b>	<b>8</b>	<b>7</b>	<b>9</b>
<b>School District</b>										
Aldine	4	1	1		1	2		1		
Alief			1			2		1		1
Brazos School					2					
Cypress-Fairbanks	2			1		2		1		
Deer Park										
Galena Park			4	2			1			1
Goose Creek		1						1		
Houston	3	2	4	2	2		2	2	4	
Houston Can Academy					1		1			
Humble										1
Katy	1	1	1							1
Klein		1								
Lamar										1
North Forest			1	5			1			
Pasadena				1						1
Clear Creek								1		
Spring			3	3			1		1	
Spring Branch									1	
GED										1
Home School										1
College/University		1	1							
Private/Parochial	2	4		3			2		1	
Out of County	1	1		1	2	1		1		
Not Available	3	2			2	1	1			1
<b>TOTAL</b>	<b>16</b>	<b>14</b>	<b>16</b>	<b>18</b>	<b>10</b>	<b>8</b>	<b>9</b>	<b>8</b>	<b>7</b>	<b>9</b>

\*Of the 2016 homicide charges, there were nine (9) actual deaths. Please note referrals are not unique to individuals.



"...exciting possibilities afforded only by living lives within the law." 2008 Annual Report